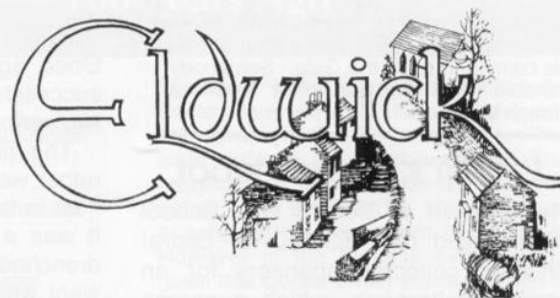


Issue No. 247 June 1999

The Eldwick Village Society Newsletter.



# GALA DAY SATURDAY 26th JUNE 1999

Sponsored by GENESIS PATTERNS Ltd.

PARADE leaves Gilstead 12.45pm Opening Ceremony

1.30pm ELDWICK RECREATION GROUND

~ ♦ ~  
PAUL JEWELL BRADFORD CITY MANAGER  
TO JUDGE THE FLOATS AND OPEN THE GALA



~ ♦ ~  
AUCTION OF SIGNED BRADFORD CITY FOOTBALL

~ ♦ ~  
AIR DISPLAY BY BATTLE OF BRITAIN SPITFIRE

~ ♦ ~  
*Dancing Display by Nydza School of Dance*



~ ♦ ~  
BRADFORD BULLS ROAD SHOW

~ ♦ ~  
PLUS PUPPETS

~ ♦ ~  
CAKE DECORATING COMPETITION 'THRU' THE CAKE 'HOLE'  
Entries to be at Memorial Hall by 11am

~ ♦ ~  
MOTOR BIKE DISPLAY BY  
The Lampkin Team G.P. BETA with Martin Crossthwaite,  
Bingley's own World No. 7 from team GAS GAS,

~ ♦ ~  
GRAND SUMMER RAFFLE

1st Prize	Electric Shower	donated by The Harrison Batley Co
2nd Prize	Microwave Oven	donated by Bentley Interiors of Keighley
3rd Prize	Bradford City Football Shirt	donated by the Gala Committee
4th Prize	Car Valet worth £35	donated by Rosedale Valeting Services
5th Prize	Meal for Two	donated by Memphis Belles, Bingley

*Plus many other Prizes*

STALLS ♦ RIDES ♦ RACES ♦ TEAS ♦ And much more.....

## K SUTCLIFFE

Prop: Graham Sutcliffe

Plumber Heating

Sanitary Engineer & Reg'd Gas Installer

15 Heaton Drive, Eldwick,  
Bingley BD16 3DN

Tel: 01274 569328 Mobile: 0976 165607

M.O.T. TESTING IN CENTRAL BINGLEY  
(While-U-Wait, if required)

**WILKINSON + WHITLEY LTD**  
Lime Street Garage, Off Park Road, Bingley

Servicing, General Repairs  
Body & Accident Repairs & Paint Spraying  
BL Suspension Repairs & Inflation  
New & Used Cars Supplied  
to your own specification

Telephone: 562787



GOOD MUSIC

LIVE BAND

ELDWICK & GILSTEAD  
GALA EVENING  
WITH  
**"AMNESIA"**

*music from  
the 60's  
to today*

A GRAND FINALE  
TO GALA DAY

SATURDAY 26th JUNE  
8.00pm - 11pm  
IN THE MEMORIAL HALL

TICKETS NOW FROM  
LOCAL SHOPS

BAR & B-B-Q

## MAWSON ATTWELL & CO.

BUILDING, ELECTRICAL &  
PLUMBING CONTRACTORS

1 HEATON CRESCENT,  
ELDWICK

Telephone 563450/595600



## Bob's Snippet

Eldwick Juniors Football Club is advertising for managers. Paul Jewell is coming to open the Gala. Somebody should warn him the under 7s are a tough lot.

### ELDWICK FIRST SCHOOL

The children of Eldwick First School have raised over £3,020 for Leprosy! Children collected sponsors for an aerobics afternoon, which everyone enjoyed. Jenny Cassidy, from Leprosy, was overwhelmed by this amount, and we now hold the fundraising record for schools in Yorkshire. To mark the event she presented the school with a special plaque, bearing the words. "Be proud of the difference you've made to people's lives".

Yours faithfully  
Susan J. Greenwood

\* £21 cures 1 person of Leprosy

### ELDWICK SCHOOL MAY FAIR



### CHRISTIAN AID WEEK *Record Broken Again*

The total raised was a magnificent £1709 – £194 more than last year. The house-to-house collection made £922 and the lunch, raffle, bring & buy sale £787.

Thanks to all who worked so hard and to those who gave so generously to make the week such a great success.

Brian Cryer  
Local Organiser



**EXPRESSIONS  
PRINT & DESIGN**

82 Otley Road, Eldwick, Nr. Bingley, BD16 3EE  
**QUALITY – VALUE – SERVICE**

Bespoke Business Forms, including:  
Flat Sheet, Continuous, Cut Sets  
Presentation Folders/wallets  
Colour Brochures and Flyers  
Envelopes – Listing Paper – Posters  
Wall Charts – Wedding Stationery  
Self Adhesive Labels, Permanent, Peelable  
Cheques and Security Print

Call in or Ring for a FREE Quotation:  
**01274 560954**

## NEW ELDWICK DRAMATIC SOCIETY CHAIRMANS REVIEW OF 1998/9

Once again NEDS have had a very successful year both socially and in its two performances, the panto and play.

The first event of the year was a rather wet Gala Day in June. We had a float in the procession but unfortunately it was a wash out and everyone got drenched. "Wack the Rat" our Gala stall went well as in previous years, thanks go to all who survived the weather and helped in any way.

Again our summer walk in July organised by Jean and Simon Bradley proved to be rather wet but a few hardy walkers braved the Haworth weather and enjoyed a good invigorating walk. A bar-b-que had been arranged at John and Glenda Dekkers and after drying out we assembled under canvas and in the garage for a very pleasant evening.

The casting of the pantomime also took place in July. A good number of adults and children attended which meant that new members were cast and given the opportunity to 'tread the boards'.

The pantomime 'Cinderella' was a huge success and sell out, it also made a new successful producer out of Celia.

Allan Pearson also achieved his ambition to write 'Cinderella' but, unfortunately, this was his last script for NEDS and also his last appearance on stage. We wish him well as he jets off to a new life in Spain.

We had a new Musical Director in the form of Robert Suddall. Robert was excellent, this was the first time he had accompanied a show and he proved to be very capable indeed. We are very fortunate that we have so much talent in our village that we can draw on to produce such professional shows.

Our New Years Party was hosted by Celia and Ian Ross, another enjoyable evening with plenty of food and drink. As is usual when there is a piano around, the evening finished off with a sing song, some of it not quite in tune due to drink etc.

The Spring Production was the next event on our calendar, this was an enjoyable play set on the Italian Riviera. The cast performed well, and the set was excellent. Thanks go to all who were involved in any way.

In April we enjoyed an evening bowling at AMF in Keighley organised by Dawn Halliday. This now seems to be an annual event.

For NEDS to progress into the millennium it needs new members to take part in as many of its activities as possible whether it be social, helping at the Gala, volunteering to help out with our shows or treading the boards. This is a village Society so please support it as much as possible so that we can go from strength to strength and be the successful group that it has been in the past.

DOROTHY WALKER  
CHAIRMAN

## PLANNING

The following applications for planning permission have been received by Bradford Council

1. Rear extension to provide garden store and snooker room - 2 Timble Drive.
2. Erection of three bedroomed bungalow with attached twin garage - at land adjacent to Farfield Works site, Glen View Road.
3. Addition of balcony to previously approved extension - The Cottage, 10 Eldwick Beck.
4. Blocking off existing entrances from Sheriff Lane and forming new entrances to Sheriff Farm Cottage and new drive to Sheriff Farm across agricultural land including additional land for garden.

All the planning applications to Bradford Council can be seen in Birches. All detailed plans may be inspected at Shipley Town Hall.

### STEPHEN C. OAKE

**LANDSCAPER • STONEMASON •  
BUILDER • FIVE-STAR HANDYMAN**

Beautiful Patios, Driveways, Paths, Steps,  
Walls, Fencing, Crazy-paving, Rendering,  
Garages, Porches, Sheds, Household  
Repairs, Rockeries, Ponds and Waterfalls,  
Turfing, Garden Clearance,  
External Painting

All work completed to a high standard at very agreeable prices. I have conducted my business in Eldwick and locality for 14 years with many excellent references and examples of workmanship. I have recently moved into Leeds but work exclusively in Eldwick and area

A friendly, efficient service. Quotations given with pleasure and no obligation.

**STEPHEN OAKE 0113-2551896**

## ARTISAN STOCKPOINT LTD

BUILDERS MERCHANTS, PLUMBERS MERCHANTS,  
TOOL HIRE, SALES & REPAIRS

LEONARD STREET, BINGLEY BD16 1DP  
Telephone (01274) 564411

## SIMPSON'S ELECTRICAL SERVICES

(ELDWICK)

HOUSEHOLD INSTALLATION AND  
MAINTENANCE WITH A PROFESSIONAL  
FRIENDLY COMPANY

**TEL: 01274 563794**

FOR FREE ESTIMATES  
WHERE SERVICE COUNTS  
CITY & GUILDS  
I.T.B. & P.E.R.A. CERTIFICATED



# JUNE 1899 — Eldwick News — 100 Years Ago

The report of the H.M. Inspector of Schools was issued on Eldwick Board School. In respect of the Evening School it stated that "the instruction has been carefully given with good results". It added that the physical exercises in the boys class had been a most interesting feature of the work of the school. The amount of grant earned would be £14.14s.0d. (being £8.12s.6d. in respect of the boys class and £5.14s.6d. for the girls). In respect of the Day School the older children in the Mixed Class were reported to be "in good order and thoroughly well taught". The Infants Class had also had a successful year and it was reported that "the infants continue to receive full justice at the hands of their able and painstaking teacher". The Day School received the highest possible grant amounting to £80.15s.6d. (£54.8s.6d. for the Mixed School and £26.7s.0d. for the Infants). The Inspector paid the school a considerable compliment by authorising the omission of an annual examination. However he had a hard word for the Bingley School Board about the village school. He stated that he had to again this year, draw the Boards attention to the inadequate condition of the girls and infants cloakroom and he requested that immediate steps be taken to improve them.

The anniversary of the Eldwick Wesleyan Chapel was held on Sunday the 11th., the services were held in the chapel yard, in the open air due to the beautiful weather. The two services were conducted, and sermons given, by Rev. J. Wells. At the evening service special music was rendered by an augmented choir, including the anthems 'Sing we merrily' and 'The Lord is my strength'. The total collections amounted to £20.

Saturday afternoon the 10th of June saw a grand garden party given by Mr. and Mrs W.C. Ferrand, for the students and parents of the Eldwick School, at Daisy Bank. Guests from Crossflatts were also invited reflecting the students therefrom attending the Evening School. During the afternoon the boys of Eldwick School gave an exhibition of dumb-bell exercise and a programme of sports was held. Photographs were taken by Master Vincent Ferrand. Tea was provided in a large marquee erected on the Bentley lawn. The prizes distributed by Mrs. Ferrand went to:-

## BOYS

### 100 Yards

1st. Ernest Robinson 2nd. Arthur Nutter  
3rd. Sam Cordingley

### 50 Yards (Egg & Spoon)

1st. James Royston 2nd. C. Lancaster  
3rd. John Cobbon

### 50 Yards 3 Legged Race

1st. Walter Wildman - H. Lancaster  
2nd. H. Wainwright - J. Royston  
3rd. Herbert Wilson - Wm. Potterson

### Throwing the Cricket Ball

1st. J. Cordingley 2nd. W Cordingley  
3rd. C. Lancaster

### 25 Yards Sack Race

1st. J. Midgley 2nd. J. Dawson  
3rd. Walter Wildman

### Needle and Thread Race

1st. Herbert Wilson 2nd John Dawson  
3rd. Walter Wildman

## GIRLS

### 50 Yards Skipping

1st. Lucy Nutter 2nd. Edith Pickard  
3rd. Annie Murgatroyd

### 50 Yards Flat

1st. Lucy Nutter 2nd. Lizzie Grimshaw  
3rd. E. Pickard

### 50 Yards Needle and Thread Race

1st. Lucy Nutter 2nd. E. Pickard  
3rd. A. Murgatroyd

### 50 Yards Potato Race

1st. Lucy Nutter 2nd. E. Pickard  
3rd. L. Grimshaw

### Consolation Flat Race

1st. M. Laycock 2nd. Annie Wilkinson  
3rd. Ada Falkingham

### Consolation Skipping Race

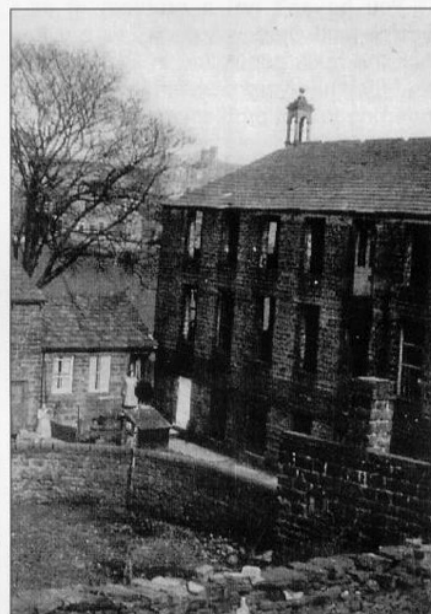
1st. Isobel Hardy 2nd. Gertrude Harrison  
3rd. L. Grainge

There was a Tug-of-war between an Eldwick team and a Crossflatts team. Held over 3 heats. The Eldwick team won all three heats.

In the evening music for dancing was provided by the Thomas String Band. The party ended at 9.30p.m. with the toast of 'long live Mr. and Mrs. Ferrand' and the singing of 'For he's a jolly good fellow'.

At Lancaster Police Court Eldwick resident Edwin Littlewood Walker, described as a Tannery Manager, was in trouble. He had the week before been fined for being drunk and disorderly in the Queens Hotel, Morecambe. On the 19th. however he was again before the Court on more serious charges connected with his visit to the Queens Hotel. He was charged with aiding and abetting another person to commit two acts of assault and battery.

Evidence was given that Walker and Doctor Abraham A. Smith of Bingley were both drunk in the Queens Hotel. They were ordered out by the waiter. They refused to go and there was something of a fracas. The Landlord Mr. Mann (a former prizefighter) ejected them both himself. However in the process evidence was given that Doctor Smith struck out with his Cherrywood stick and struck the waiter, Charles Hitch, a number of violent blows. Walker was said to have assisted and encouraged the doctor. Giving evidence Hitch said that he did not wish the matter to come to Court, because at a later date "he had been well compensated by the two gentlemen". This statement got him in trouble with the Chairman of the Magistrates, who said that compensation had nothing to do with it, and that the Magistrates were there to administer justice. Mainly on the evidence of the Landlord, Walker was dealt with lightly and was only fined a further 10s.0d. on two counts with costs. Doctor Smith's case was adjourned to another Court.



Eldwick Beck Bottom, circa 1930  
Do you recognise the Bell Tower and do you know where it is now?



**Estate Agents, Valuers & Surveyors**  
**Do you value your home?**  
**We Do!**  
**Tel: 551552**

## PENNINE COMMERCIAL PENNINE TELEVISION PENNINE SERVICE

Home Electronics · Satellite  
Microwave Ovens · Camcorders  
General Consumer Electronic Products

**SERVICING THE ELDWICK AREA**  
**01535 607593**

ESC (TV) Limited, 58 Cavendish Street,  
Keighley, West Yorkshire BD21 3RL  
Telephone: 01535 681961/607593  
Sales/Service  
Fax: 01535 611977

**Dine out the Indian Way in High Style**

at the

**SHAMA  
TANDOORI  
of BINGLEY**  
(Fully Licensed)

RELAXED & FRIENDLY ATMOSPHERE  
LARGEST INDIAN VEGETARIAN  
MENU IN THE AREA

FRESH INDIAN VEGETABLES USED.  
OUR OWN UNIQUE TASTE

Open 7 nights a week.

Opposite Bradford &  
Bingley Building Society,  
above the precinct.

Booking Advisable - Tel: 569565.



# Morris and Hugh

Dear Morris,

I have a problem and don't know which way to turn, so I thought of you.

My language classes are from 9.00am to 1.00pm every day, and two or three times a week we have an extra lesson in the afternoon - Volleyball!

In my class are young ladies from Germany, Switzerland and Italy - what distractions - and then there is Carmen, our professor!

It's all too much for an old fool like me to cope with - or is it? Do I succumb to the temptations thrust in front of me or do I try and ignore them and soldier on? You're into temptation - please advise before my return flight.

Yours in turmoil  
Hugh

Dear Hugh,

You haven't got a problem at all - you're just winding me up. I'll bet that half the male population in Eldwick wish that they had your problem, and I am not referring to that problem down below that you had prior to your departure.

Seriously though, I can't see the problem with Volleyball. It's quite straightforward - all you have to do is to get the wretched thing back across the net before it bounces. You should never be distracted by the opposition; if you are, then try wearing sunglasses or blinkers.

The language classes are going well I see. Your card was addressed to Morris @Birches Club, Otley Road, Eldwick, Near Bingley, West Yorkshire, Inglaterra. I'm impressed.

You have asked for my advice, well here it is. Succumb to all the temptations; give into everything and everybody, but remember to give Thursdays a miss. When you next communicate maybe you will have become fluent in San Miguel or castanets, and in the meantime don't worry about making Newsletter deadlines or writing copy. Your legacy is in very unsafe hands - mine! May the sun never set on your oranges.

Hope I've helped.  
Morris

## RECLAIMED PINE FURNISHINGS

- Manufacturers of Occasional Furniture in New & Old Wood
- Handmade Bespoke Kitchens
- Wood Flooring

Hill Top Farm, Heights Lane  
Eldwick, Bingley BD16 3AP

Tel: 01274 510237

Copy for publication in next months Newsletter to reach the Editorial Committee c/o Birches, the Post Box inside the Post Office, or telephoned to Jean Reynolds (564901) who will be pleased to accept it on behalf of the Editor. Deadline for copy is 5th July 1999.



## THE MADNESS CONTINUES

This car was photographed "parked" blocking the pavement on Otley Road on a Saturday lunchtime.

Timble Drive, Eldwick

## Cable Ties

I have been duped and misled many times, as have we all at one time or another, but I feel particularly taken advantage of this month by Yorkshire Cable.

It all began a few weeks ago when my partner finally got fed up with not being able to use the phone while I surfed the net. She insisted that either I turn the computer off and get a line or get another phone line so she could at least gossip to someone else about my obsession with the cyber-world behind my back.

I duly phoned BT and several cable companies about a second phone, the cable companies were marginally more expensive than BT but they offered the added bonus of cable TV as well. Here I broke the 26th Ferengi rule of acquisition: When buying one thing don't get sold another. Finding the best deal to be NTL Cabletel, I rang back to arrange installation, only to find that the favourable terms and better basic range of TV channels included in their package isn't available in this area. Indeed the only package that is available is Yorkshire Cable's, which was undoubtedly the most expensive package from a cable provider. Other providers packages are available at a substantial saving over Yorkshire Cable's prices as near as Halifax. I don't know about you but I put up with months of disruption to the roads because I believed the marketing blurb that cable would increase competition, and consequently lower prices to the customer. Now I find that the competition they were referring to was solely on the telephone side of the business. As for cable television they can charge virtually what they want because there is no competition, unless of course we wish to put up with our roads being excavated for a second time so a new company can lay their cables.

After a couple of days confusion over the fact that every house in our street except ours had been provided with a connection point to the network, we were finally connected.

The next blow came when we started to watch the "fantastic" new array of channels, and found a grossly disappointing range of crass American chat shows, vintage British repeats and old editions of Star Trek, all of which are punctuated by adverts what seems like every few seconds. The absolute worst of the selection was undoubtedly the shopping channel. Here an unnaturally tanned presenter drivels for interminable hours over the merits of fake jewellery at ridiculous prices, which are payable in an infinite number of instalments (it would be interesting to see if the products last as long as the payments).

If this is what the entertainment of the future is going to be I'm going back to the traditional way of wasting an evening and going down the pub. Whatever you may think of the demons of drink at least down there I'll get better conversation than I've found anywhere on cable telly. And at least I'll have the satisfaction that people in Halifax are paying the same price for a pint.

Cheers Antony.

## PETER TREVEY JOINERY & SECURITY

All Joinery & Carpentry Work  
Fitted Kitchens & Bedrooms  
Doors, Windows & Screens  
Fencing, Trelliswork & Pergolas

Tel: 01274 563986  
Fax: 01274 783830  
Mobile: 0836 354143

TYPESETTING • DESIGN • DISK PROCESSING  
INTERNET WEBSITE DESIGN

*Highlight*

HIGHLIGHT TYPE BUREAU LIMITED  
CLIFTON HOUSE, 2 CLIFTON VILLAS  
BRADFORD, WEST YORKSHIRE BD8 7BY  
TEL: (01274) 548004 FAX: (01274) 548005