

Eldwick

Village Society

Newsletter

Issue No. 508 DECEMBER 2021

A very happy Christmas to all our Readers

Eldwick Bonfire and Fireworks Display

Thanks to all of you who attended the Eldwick Bonfire and Fireworks Display, the event went well despite the atrocious weather during the afternoon. Hang gliding with gazebos was the sport of the day. We estimate that nearly two thousand attended.

We are raising money for the Yorkshire Air Ambulance and local charities. It is hoped that due to the success of this event we may be able to reach our target of fifty thousand pounds for the YAA.

The event is run entirely by volunteers who are well trained and experienced. Many thanks to all of them. Rotary and the Scouts help was greatly appreciated. Thanks again to our main sponsors Ric and Michele of Janus Interiors and to Andrew and Allan of Manningham Concrete.

Carol singing

The Christmas Eve Carol Singing is back! All are welcome to attend the Carol Singing which will be taking place in the Memorial Hall at 6pm on Christmas Eve. The Hall will be newly decorated with a real festive theme.

We are glad to have The Salvation Army Band back with our own Robert Suddall a nationally celebrated organist.

Covid has not gone away so if you wish to wear a mask please do. Please respect the "space" of others. We may also have the doors open and amplify the music for those who wish to sing outside.

Entry is free.



Photos by Bill Faulding



REMEMBRANCE



This "illumination" has been much admired. It was the idea of local businessman Richard Emmott aided by Councillor Mark Truelove and joint funding from The Eldwick Village Society.



LIGHT UP NATIVITY

CHRISTMAS EVE

15:30- 18:30

THE ELDWICK CHURCH

FREE BOOKING:

LIGHTUPNATIVITY.CO.UK

BIRCHES

Open from 12 noon onwards

Saturday & Sunday

6 - 11pm weekly.

NOW SHOWING SKY SPORTS

Paul Rae C.A.R.P.E.T.S

*Merry Christmas & Happy New Year
to all our past, present
& future customers.*

*Thank you for your support.
Paul*



Established 1983 in Eldwick



BINGLEY TOWN COUNCIL

Office Hours

Bingley Town Council has recently undertaken a review of its office opening times at The Hub, Myrtle Place.

As a result it has been agreed that the office will open to the general public for enquires on Monday and Wednesdays between 1pm and 3pm. Town Council staff will be available outside these times on an appointment basis if required.

Staff can also be contacted by email at enquiries@bingleytowncouncil.gov.uk or by telephone, Monday to Friday 9am to 5pm, on:

Town Clerk: 07529 222679

Deputy Town Clerk on 07703 188660

Administrative Officer on 07783 519439 (Tuesday, Wednesday and Friday).

Councillor Vacancy

A Councillor vacancy has arisen following the resignation of the councillor representing the Priestthorpe ward. As the criteria for having an election has not been met the position will be filled by co-option. One candidate has put their name forward and will be co-opted by the end of November

You Tube

Council meetings will be recorded and available for viewing on You Tube. The Council has not committed to keep recordings on its systems but has resolved to upload any recordings it may

make to its YouTube account, where members of the public may view them. As YouTube is not a storage site, recordings will be overwritten in time according to YouTube's terms and conditions.

Pavement Markers – Five Rise Locks

The Council are in discussions with Bradford Council and the Canal and Rivers Trust to install pavement markers directing the way to the Five Rise Locks, hopefully these will be installed in the first quarter of 2022.

Markets

The Council have agreed with Otley Town Partnership who run the market on behalf of BTC to continue for the next twelve months. Markets will run on the first Saturday of every month with exception of January, your continued support for the market is greatly appreciated

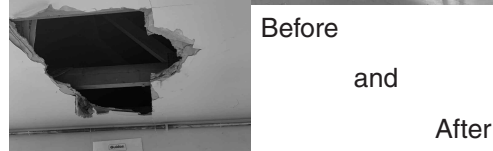
Christmas Lights

Trust you all enjoy this year's Christmas Lights; this year we have installed lights and a Christmas tree in Gilstead in line with Councils commitments to install lights in the villages in the Bingley Parish.

On behalf of your local Eldwick councillors, on Bingley Town Council may we wish you all a very Happy and Peaceful Christmas and all the very best for 2022.

THE ELDWICK SCOUT AND GUIDE HUT has recently undergone some extensive refurbishments. We would like to invite the local community to an open afternoon on Saturday 11th December from 2-4pm where we will serve mince pies and mulled wine. We will be accepting bookings for the venue to be used by other groups and individuals, so please come, and look around.

We would like to particularly extend this invite to all ex Scouts, Brownies and Guides. If you've ever been to the hut before, you'll be amazed at what we've achieved!



Before

and

After



What's on at Bingley Arts Centre

1 Dec – Saltaire Arts Society; talk entitled “Dickens of a Christmas” at 2:00pm

6 – 11 Dec – Bingley Little Theatre presents “Little Shop of Horrors” at 7:30pm

13 Dec – Blood Donor Session from 12:30pm

16 Dec – Lipservice, comedy duo, present “Chateau Ghoul” at 7:30pm

18 Dec – “More Wines to Taste” with Claire Greenwood at 7:30pm

21 Dec – Community Cinema showing “Judy” at 2:30pm

Full details and prices can be found on our website - bingleyartscentre.co.uk; tickets available by telephone or in person at our box office open 10am-3:45pm Mon-Fri 01274 567983 or online.

We deliver fresh, gift-wrapped flowers locally, 7 days a week with prices starting at £25.00+ delivery.

Beautiful Wedding Flowers
Funeral & Sympathy Flowers
Special Occasions Gift Wrapped Plants

 Tel: 01274 563750
Flowers by Eldwick Post Office

WINNER OF THE INDEPENDENT TRADER OF THE YEAR

KITCHENS, BATHROOMS
& BEDROOMS

For more information or to discuss
your project call:

01274 566100

Unit 1A Leonards Place, Leonard Street
Bingley, West Yorkshire BD16 1DP

www.janusinteriors.co.uk
info@janusinteriors.co.uk

Professionally covering all aspects of domestic
Electrical & Security work including CCTV

Over 35 years professional experience in the
electrical industry

Approved installer of Smart Electric Vehicle
charging points

City & Guilds trained

Tel: 01274 511433 (Eldwick)





www.lawnkeeper.co.uk

j.cubitt@lawnkeeper.co.uk

01274 551565 | 07498 297033

Yorkshire Countrywomen's Association

The speaker for our November meeting was Denise Adlard. Her talk on Bedpans and False Teeth was very humorous and gave an excellent talk of her experience as a nurse. It was enjoyed by all. Our next meeting is 14th December. We do not have a speaker and will be an open evening. We will be having mince pies etc.

Future Event: Our meeting in January will be our Annual Beetle Drive.

New members are always welcome. Please contact Bev on 01274 565077

The Zebra Flashes! at last

It has taken approximately two and a half months to get the zebra fully functioning.

Thanks to Bingley Town Councillor Mark Truelove who wrote directly to Susan Hinchcliffe the Bradford Council leader.

The lights were then activated within twenty four hours of the email!

Well done!



SALLY EMERY MAR
REFLEXOLOGY

Reflexology and Reiki treatments available in
Eldwick and East Morton.

To book call Sally on 07813 785950 or
email sallyemery77@outlook.com
www.sallyemeryreflexology.co.uk

✠ NEWS FROM THE ELDWICK CHURCH ✠

The new Minister for Eldwick, Rev Brian Greenfield arrived just in time for the Christmas bustle. His licensing service took place on 20th November, with Bishop Toby presiding. We will be sharing Rev Brian with St Paul's, Shipley and Christchurch, Windhill. Brian's first service at Eldwick will be on 12th December when we are celebrating Family Communion.

Where do the Eldwick Christmas angels live? 25 angels are hidden around the village on posts in people's gardens. From 1st December, you can go on an angel hunt, matching the angel names to a number. No prize this year, just the excitement of taking part!

Pick up your trail map & angel list from Church Café (open Tuesday & Thursday mornings), from Eldwick Post Office or download from our website www.eldwickchurch.org.uk

Inside Church, there's lots going on in December:

Carols by Candlelight with mulled wine and mince pies takes place at 7.00 pm on Thursday 16th December.

Messy Christingle is for all of the family and takes place on Saturday 18th December starting at 3.30 pm. Make your own Christingle orange, take part in other crafts, and enjoy songs, a story, a prayer, and something to eat.

Sunday 19th is Family Worship with that Christmassy feel.

Light Up Nativity (indoors) returns on Christmas eve from 3.30 pm. Walk through the magic of the Christmas story. Free booking online at www.lightupnativity.co.uk

Also on Christmas eve, there's **Midnight Communion**, starting at 11.30 pm. Then on Christmas Day at 10.00 am we'll be

holding a short Family Worship followed by a short Communion. Boxing Day falls on Sunday & there's a short family service at 10.30 am.

Contact us if you would like us to pray for you or for someone in need. Prayer requests can be submitted to prayer@eldwickchurch.org.uk where they are forwarded anonymously to our prayer team.

For general enquiries, please email office@eldwickchurch.org.uk or telephone 01274 422015.

You can keep up with everything we're doing on Facebook @TheEldwickChurch, Twitter @EldwickChurch; or on our website <http://eldwickchurch.org.uk>

ELDWICK & GILSTEAD HORTICULTURAL SOCIETY

Our AGM was very well attended with 37 members. Delighted to announce that our subs for the year are staying at £10, with the bonus of not paying on the door for the year Non-members will remain at £3. A quiz (not gardening related) followed with a pie and pea supper, which was very well received. Our thanks to Binns of Saltaire for excellent pies and pasties.

We have a short break now so you have time to plant your tulips and winter bedding and will be back to welcome you on Tuesday 18th January when Sarah Owen-Hughes from Askham Brian college will be talking on "I know all the dirt".

Happy gardening until next year.

Cullingworth Village based family business

Fresh Eggs
Fresh Milk
Fresh Orange Juice

Milk sourced locally from Milner Field Farm Gilstead

t: 07427 762966

WILKINSON & WHITLEY LTD.

ALL MODEL SERVICING MOT TESTING

TYRES BATTERIES

BRAKES WELDING

EXHAUSTS

AIR CON. REPAIRS SERVICE LIGHT RESET

LIME STREET, BINGLEY 01274 562787

PETER MARRIOTT PROPERTY SERVICES

Professional Interior Painting & Decorating.
Please call to discuss your requirements.
Free estimates & advice.
No job too small
A friendly, reliable and professional service

07985 050543
01274 510969

Simpson's Electrical of Bingley

- ✓ Rewires ✓ Sockets ✓ Inspections
- ✓ Lighting ✓ Alarms ✓ Telephone
- ✓ Testing ✓ TV & Audio ✓ Faults

• Est. 1995 - Reliable & Prompt Service
• Family Run Business
• Free Estimates & Expert Advice
• Work Carried Out With Care & Guaranteed

Over 75% Of Our Work Is Through Recommendations!!

01274 563794
www.simpsonselectrical.com

Domestic Electricals Ltd. aaaaaa Simpsons Electrical

Shama BINGLEY

Indian & Kashmiri Cuisine
Open 7 days from 5pm - 11pm
Early booking essential

Clarke House, Keighley Road
Bingley BD16 2RD
Telephone 01274 563 777
www.shamabingley.co.uk
Email: info@shamabingley.co.uk

ANDREW M ELLERSHAW

Independent Family Funeral Director
& Memorial Masonry Consultant

Bingley Chapel of Rest, Church Street,
Bingley, BD16 2PU

Supporting the bereaved for over 30 years.
Providing a Caring, Professional & Dignified Service.
Independent and Family Run
Private Chapel of Rest
Simple, Traditional & Modern Funerals.
Pre-paid Funeral Plans. Memorial Masonry Services.

We are available anytime day or night

Telephone 01274 551555
www.aefuneralservices.co.uk
email: andrew@aefuneralservices.co.uk

Andrew Tracey Plumbing and Heating Services (Eldwick)

- Central Heating Systems
- Boiler Exchanges
- Bathroom Installations
- Tiling
- General Plumbing

Tel: 01274 967710/07799536605

safe REGISTERED 211677

Christmas in Prince of Wales Park



*Friends of Prince of Wales Park
Present...*

Snowman Trail



Merry Christmas

Sat 18th Dec to Jan 5th

Yes, it's back! Download a map from our website or Facebook page, hunt the snowmen and work out the name of the Carol. Put your comments on our MASSIVE Christmas tree.

www.friendsofpoWP.org.uk/ or
www.facebook.com/friendsofprinceofwalespark

Carols 'n' Cakes



Sat 18th December

Join us in the arena at 11.30, bring some treats to share, your voices and instruments and join our traditional Christmas sing along.

Donations welcome

Christmas will be back in the park this year - pictures from 2019.
Everyone is invited!



6 designs, 12 cards with envelopes



£6 per pack or 2 packs for £10



The winter cards are on sale at the Carols 'n' Cakes event. The QR code will take you to part of our web site that shows the cards, prices and where they can be purchased.



INTERIOR PAINTING AND DECORATING
Also



PICTURE FRAMING

by *Chris Bettles*

21 Mansfield Avenue, Eldwick

Tel: 01274 510252
Mob: 07941 364274



BOND GARDEN SERVICES

SIMON BOND

ELDWICK
BINGLEY

01274 567439
07790 415593
janbond1956@gmail.com

HEDGES TRIMMED

MOWING & TURFING

TREES FELLED/PRUNED

FENCING/PLANTING

Five Rise Locks Hotel & Bistro

Come and sample our new Bistro Menu
Available from 6:30pm - 8:30pm
Family Events.

Available for Weddings, Parties, Funerals,
Family Gatherings and More.

Let our Family look after your family.

Christmas Menus now available

Telephone 01274 565296

**Five Rise Locks Hotel, Beck Lane
Bingley BD16**