

Eldwick Newsletter

Village Society

Issue No. 506 October 2021

Eldwick & Gilstead Horticultural Society

THE ANNUAL SHOW

It was such a pleasure to welcome everyone to the show on a glorious sunny Saturday, before the bank holiday. We had a number of new exhibitors and prize winners, which is great to see and next year we hope to inspire more of you to come and join in. There are classes for all ages and standards. A steady stream of viewers joined us in the Memorial Hall and Church Hall and the cafe did its usual roaring trade. A lot of catching up was done and plans for next years entries were all ready being hatched.



Following the theme of home produce, our next meeting will be Tuesday 19th October at 7:30pm. Martin and Jill Fish will be talking about 'Gardening on the Menu' with practical tips and no doubt some tasting going on. You don't have to be a member to come along, we would love to see you.

ELDWICK & GILSTEAD FELL RACE

The heart of the race is the village Gala with runners enjoying the Gala entertainment, the Gala Queen firing the starting gun, and the race finishing across the gala field, to the cheers of friends, families and gala goers, into the central arena. And, as a short summer race there is room for local runners, villagers and juniors from 13 upwards to try their legs against the senior club runners – and there are often surprises to be had. Prizes go to a wide range of age categories from U15 to 70+ as well as to Local Unattached (to a running club) runners, and teams. For younger runners (age 9 and over) there is usually a shorter Junior race around the fields and paths close to the Gala field.

This year quality won the day with Joe Baxter of Pudsey & Bramley reaching the trig point on Hope Hill, Baildon Moor first, and Katie Walshaw of Holmfirth leading the Men and Women home in 16.49 and 19.30. Age category prizes went to Colin Walker and Lesely Watson (V40), Andy Brown and Alison Weston (V50), Simon Bennett and Mary Green (V60), and David Tait and Wendy Dodds (V70). Junior prizes went to Ruby Coulton (U15), Rebecca Flaherty and Elijah Peers-Webb (U17), Grace Dawson and Alex Flaherty (U19) and Daniel Netherwood (U23).

Local Unattached prizes went to Andrew Coulton (well done to the Coulton family), and Lucy Barker, and the Mens and Ladies team prizes both went to Bingley Harriers.

Alongside the runners and their supporters, a team of 30 or so are needed to ensure both races run smoothly and safely, especially as junior runners are all allowed to compete. Dealing with registering runners, equipment, managing the road closure, marshalling at key points on the route, helping at road crossings, and doing the race timings and results, are just a few of the jobs. There is always a mix of experienced volunteers and new faces and the success of the race depends on them and them passing on their knowledge. A big thankyou from me to the many Harriers, local friends, and the Gala team who all chip in to support the Race, and on a sunny Gala day what better place is there to be. So non-runner or runner there is always room to get involved in your village gala, your village gala fell race and your local running club. See you soon and at next year's Gala and Fell Race – probably the last Saturday in June. Book it in your diary now.

Becky Weight, Eldwick, Bingley Harriers
Race Organiser, Eldwick & Gilstead Gala Fell Race

MORE ON THE HISTORY OF THE FELL RACE NEXT MONTH.

Bonfire

We are pleased to announce that The Eldwick Village Society will be holding a Bonfire and Fireworks Display as in previous years.

The event will be on Eldwick Recreation Ground on Saturday 6th November. The gates open at 6.30 and fire lit approx. 7.15 and the fireworks at 7.30 approx.

There will be the usual Burnt Bangers and Birches Freehouse will be open for refreshment.

Tickets may be bought in advance from the Post Office or on the gate but this will be cash only. Adults are six pounds, accompanied children two pounds and a family of four fifteen pounds.

Remember that the venue is a field so please wear appropriate footwear. There is also some "hard standing" on the Church car park.

We would like to thank our sponsors especially our main sponsors Janus Interiors and Manningham Concrete.

We are very keen that this will be a safe family event.

Please do not bring any fireworks to this event especially sparklers



Paul Rae C.A.R.P.E.T.S

Est. 1983

I'll bring sample to you!

Please call Paul on 07778 568845

Over 30 years experience & friendly advice

BIRCHES

Open from 12 noon onwards

Saturday & Sunday

6 - 11pm weekly.

NOW SHOWING SKY SPORTS

ELDWICK & GILSTEAD HORTICULTURAL SOCIETY

This Society is one of the oldest, if not the oldest in the village, having been formed in 1907 and over the years many books and records have been accumulated. Therefore so they are not lost to posterity the following records were recently deposited with the West Yorkshire Archive in Bradford under reference no: WYB819 and accession no: WYAS8991:

- (1) Various minutes books from 1941 to 2007
- (2) Various cash books from 1956 to 2006
- (3) One subscriptions and orders book from 1962 to 1995
- (4) One file of printed accounts from 1967 to 2006

The archive is based in the Margaret McMillan Tower, Prince's Way, Bradford.

John Muggleston (Treasurer)

STORY STONE FIELD UPDATE ROYAL PLATINUM JUBILEE

Following the criminal damage affecting the commemorative tree planting, Bradford Council has stated its future intentions. A letter has gone to nearby residents about the damage to trees and the plan, courtesy of the Woodland Trust, to resume planting in November. It makes clear the police require information about the previous damage and that protective fencing will be installed to deter any further vandalism. Further, the Council is to address the issue of illegal encroachment onto the field from adjacent properties installing forms of entry. The Police's crime number is 13210282789 for reference. An exact date, with an invitation for the local community to be involved in the tree planting, will be placed on the website of the Eldwick Village Society, in the press and on posters. Everyone will be welcome.

BINGLEY JANUS CLUB

FOR RETIRED MEN IN BINGLEY AND SURROUNDING AREAS,

MEETING AT ELDWICK MEMORIAL HALL, OTLEY ROAD ON THURSDAYS FROM 10a.m.

President : John Muggleston Secretary : Graham Anderson tel. 01274 563843

September

- 9th John Muggleston – The battle of Svoder
16th Martyn Lunn – Space in the 1960s
23rd Andy Wilson – The work of Yorkshire
Cancer Research

October

- 7th Sam Riley – The work of the Aire River Trust
14th Jackie Depelle – Riding along on the crest
of a wave
21st AGM
28th Roger Pollard – The History of Bell Ringing

PAVEMENT PARKING

SIR: Enroute along Warren Lane and Otley Road on the morning of 15 September 2021 I saw and photographed these 3 vehicles which were parked with their front and rear wheels actually well onto the pavement.



What is it that some people simply fail to 'get' and refuse to understand? What is wrong with people these days?

A pavement - any pavement - is there for the use of pedestrians and not for the provision of additional parking of vehicles.

This anti social behaviour is on the increase. Everywhere. It's a nightmare and potentially extremely dangerous.

Not only is safety of pedestrians being compromised by the thoughtless individuals who adopt this unnecessary habit but, as we all are Council Tax payers the damage caused over time by repeatedly parking vehicles on such surfaces will result in pavements collapsing.

It's not a big ask for people to park their vehicles on the road or, in their driveways and, it is time this behaviour stopped.

Maybe the owners of the vehicles in my photographs should be served fines for this unlawful behaviour and, as my photographs show clearly the registration licence plates of all three vehicles on this occasion, the perpetrators will in future instead adopt a more considerate and responsible manner towards pavement users.

Name & Address Supplied.

A BIG THANK YOU

I think all of us in Eldwick village should congratulate and say a huge thank you to the Eldwick village society committee for the huge amount of totally voluntary work they put in to provide the village with the fantastic events they put on throughout the year, enabling everybody young and not so young to enjoy themselves and raising significant funds for great causes, especially this year where there was only a week between the gala and the beer festival, thank you all and well done.

Whilst writing and perusing the photographs from the beer festival, I would like to commiserate with Paul Fawcett who obviously, looking at his shirt, tripped and fell onto the new Zebra crossing whilst the paint was still wet!

Also cometh the hour cometh the man, Richard Emmott stepped forward and volunteered to stop the bar falling over for the duration of one evening, unfortunately I am reliably informed the bar didn't return the favour and stop him falling over at the end of the evening. What a guy !!

Bob Harrison
Glen Road



WINNER OF THE INDEPENDENT TRADER OF THE YEAR

KITCHENS, BATHROOMS
& BEDROOMS

For more information or to discuss
your project call:

01274 566100

Unit 1A Leonards Place, Leonard Street
Bingley, West Yorkshire BD16 1DP

www.janusinteriors.co.uk
info@janusinteriors.co.uk



JCH

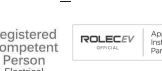
Electrical Services Ltd

Professionally covering all aspects of domestic
Electrical & Security work including CCTV

Over 35 years professional experience in the
electrical industry

Approved installer of Smart Electric Vehicle
charging points
City & Guilds trained

Tel: 01274 511433 (Eldwick)



www.lawnkeeper.co.uk

j.cubitt@lawnkeeper.co.uk

01274 551565 | 07498 297033

2021 GALA WINTER DISCO

for 7 - 11 year olds

Friday 19th November

7 - 8.30pm in the Memorial Hall

Entry £2

Pop & Crisps 20p

To keep our adult/child ratio up a couple of extra adults on the night will be helpful.

Please email galaeldwick@gmail.com if you fancy 90 minutes of disco activity !!

Eldwick & Gilstead Gala Donations & News

Thank you again for supporting this years event. The full financial results will be known soon - donations will be allocated to local organisations at our meeting in October.

If your local children's community group would like to apply for a donation from the Gala Fund please email galaeldwick@gmail.com with details before 10th October to be considered.

The Gala Fund has distributed over £2000 annually to local groups for many years.

You can still donate via the Just Giving page available from our Facebook Page 'Eldwick & Gilstead Gala' this will start to go towards next years event.

Do you have any photos or feedback from Gala Day?? - please email them to galaeldwick@gmail.com we would love to see them.

Could you be involved in planning next years event ??

We will be meeting on Wednesday evenings - new faces & input welcome - an excellent fun way to be involved in village life.

Meetings will be at 8pm at the Birches on

Wed 2nd Feb

Wed 9th March

Wed 6th April inc AGM

Wed 4th May

Wed 1st June

Gala Event Dates for your diary

2021 GALA WINTER DISCO for 7 - 11 year olds Friday 19th November 7-8.30pm in the Memorial Hall

Looking forward to next year 2022

Gala Queen/King Disco Friday 4th March 7 - 8.30pm

Summer Discos Friday 17th June

6-6.45pm age 3 - 7 & 7-8.30pm age 7 - 11

Pet Show Monday 20th June 6pm

Fun Run Friday 24th June 7pm

2022 GALA DAY Saturday 25th June

FUNDRAISER FOR MANORLANDS

Following a very similar successful event 2 years ago which raised £1900.00 Anton and Mike have organised yet another fundraising event in aid of Manorlands Hospice.

"Bootleg 60's" will entertain with professional quality at 8.30pm on 27th November 2021.

Tickets are now available from Birches. Any Raffle prize donations would be greatly appreciated.



The Bootleg 60s!

4 piece professional band

**27th November 2021
8pm for 8.30pm start
Eldwick Memorial Hall**

Raffle drawn at end of night
visit: www.sue Ryder.org/manorlands
call: Anton - 07989 921 886
email: harriet.wood@sue Ryder.org

In support of
Sue Ryder
palliative,
neurological
and bereavement
support

Sue Ryder is a charity registered in England and Wales (1103278) and in Scotland (SC005108). Not for profit. © Sue Ryder July 2018. Charity Registration: 1103278/SC005108

Simpson's Electrical of Bingley

- ✓ Rewires ✓ Sockets ✓ Inspections
- ✓ Lighting ✓ Alarms ✓ Telephone
- ✓ Testing ✓ TV & Audio ✓ Faults

- Est. 1995 - Reliable & Prompt Service
- Family Run Business
- Free Estimates & Expert Advice
- Work Carried Out With Care & Guaranteed

Over 75% Of Our Work Is Through Recommendations!!

01274 563794

www.simpsonselectrical.com

DOMESTIC
INSTALLER

aaaaaa Simpsons Electrical

NEWS FROM THE ELDWICK CHURCH

NEW APPOINTMENTS The Methodist Circuit has confirmed that Rev Terry Keen has been allocated to the Eldwick Church. He will work with our church as part of his duties in the Airedale Circuit. We look forward to meeting him when he comes to preach towards the end of October.

Separately, the Leeds Diocese of the Church of England has announced that Rev. Brian Greenfield, currently serving as Assistant Curate at Sutton, Cowling and Lothersdale, will become Priest in Charge of St Paul's Shipley, Priest in Charge of Christchurch, Windhill, and Minister of the Eldwick Church. This is a shared post and Rev. Brian will work the equivalent of two days a week in our church. His Licensing Service will take place on 20th November, and we look forward to welcoming him in time for Advent.

HARVEST this year will take the Messy Church format so please come along on Saturday 16th October at 3.30 pm. We're collecting donations for the Bingley Food Bank as Harvest gifts, so if you are able, please bring item(s) like tinned food, dried pasta/rice, long-life milk, and cereals. The food bank website has updates about what is needed:

<https://bingleyfoodbank.org.uk/how-to-donate-food/>

Looking further ahead, we invite you to our Remembrance service at 10.30 am on Sunday 14 November. This includes a short Act of Remembrance at 11.00 am at Eldwick War Memorial.

Contact us if you would like us to pray for you or for someone in need. Prayer requests can be submitted to prayer@eldwickchurch.org.uk where they are forwarded anonymously to our prayer team.

For general enquiries, please email office@eldwickchurch.org.uk or telephone 01274 422015.

You can keep up with everything we're doing on **Facebook @TheEldwickChurch**

Twitter @EldwickChurch; or on our website <http://eldwickchurch.org.uk>

Cullingworth Village based family business

Milk sourced locally from Milner Field Farm Gilstead

t: 07427 762966

WILKINSON & WHITLEY LTD.

ALL MODEL SERVICING

MOT TESTING

TYRES

BATTERIES

BRAKES

WELDING

EXHAUSTS

ALL MAKES

AIR CON. REPAIRS

SERVICE LIGHT RESET

LIME STREET, BINGLEY 01274 562787

PETER MARRIOTT PROPERTY SERVICES

Professional Interior Painting & Decorating.
Please call to discuss your requirements.
Free estimates & advice.
No job too small
A friendly, reliable and professional service

07985 050543
01274 510969

Shama

BINGLEY

Indian & Kashmiri Cuisine
Open 7 days from 5pm - 11pm
Early booking essential

Clarke House, Keighley Road
Bingley BD16 2RD
Telephone 01274 563 777
www.shamabingley.co.uk
Email: info@shamabingley.co.uk

ANDREW M ELLERSHAW

Independent Family Funeral Director & Memorial Masonry Consultant

Bingley Chapel of Rest, Church Street, Bingley, BD16 2PU

Supporting the bereaved for over 30 years.
Providing a Caring, Professional & Dignified Service.
Independent and Family Run
Private Chapel of Rest
Simple, Traditional & Modern Funerals.
Pre-paid Funeral Plans. Memorial Masonry Services.

We are available anytime day or night

Telephone 01274 551555
www.aefuneralservices.co.uk
email: andrew@aefuneralservices.co.uk

Andrew Tracey
Plumbing and Heating Services
(Eldwick)

- Central Heating Systems
- Boiler Exchanges
- Bathroom Installations
- Tiling
- General Plumbing

211677

Tel: 01274 967710/07799536605

AYE, THA'S ON'T REIGHT ROAD LAD

Yes, you are on the correct road or Yes you have nearly answered correctly.

Following Eldwick's claim to fame, widely published, for benefitting from a technological advance in the method of resurfacing Otley Road, involving rubber, that was the latest story about our local roads. In years gone by it was not just a question of repairing roads but of actually creating them. The Cistercian monks of Riveaulx Abbey owned extensive lands around Eldwick and Bingley, notably at Faweather Grange on the Eldwick/Baildon border and they created routes for provisions, sheep herding and distributing metal goods from locally sourced iron nodules. Lode Pit or Load Pit Road? It was not until the 16th century that local people as ratepayers had to commit to four weeks, later six weeks a year to repairing roads. Any such householder 'with plough' had to provide a horse, cart and two men to do such work for that period. The Manor Court had an overseer to keep records and to fine anyone for causing a road to flood or to make any blockage.

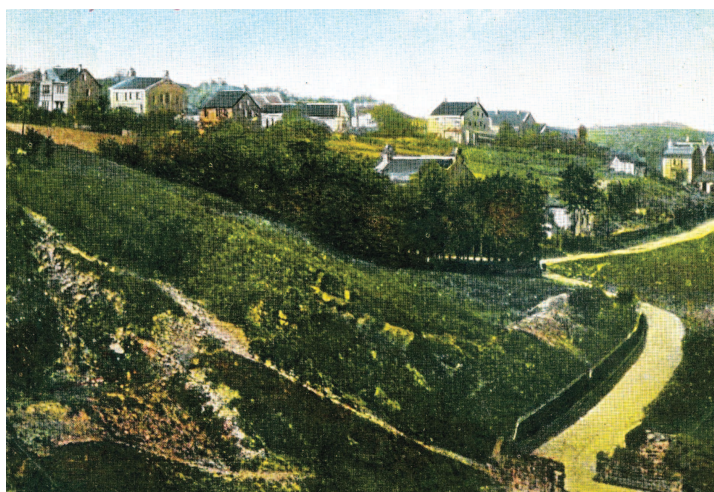
The 1770 maps show only a few roads and in 1758 an indictment was served against locals who had caused the King's Highway from Halifax to Ilkley, passing through Gilstead and Eldwick to become 'ruinous, miry, deep and broken'. Seemingly no action was taken and so the next year a fine of £40 was imposed on the parish, to be collected from ratepayers. In Eldwick, the original track from Eldwick Hall to High Eldwick and the Keighley to Otley road was a paved causeway and some of the 'causey' stones remain today, as at Tewett. Joshua Crompton Stansfield of Esholt Hall was a major landowner in Eldwick and kept the High road in repair. In 1786 his land agent Mr Lobley called a meeting in Bingley to discuss plans to improve roads and that from Glovershaw to Baildon was agreed. Then there was a debate about the Eldwick Hall to High Eldwick track. It began opposite the Hall, crossing several fields before taking a sharp left turn climbing upwards to reach the High Road via Tunstall Lane, (beyond today's Wesley Way at The Croft). Could a more direct route be created from Eldwick Hall straight up to High Gate on the edge of the moor? Mr Crompton offered to give up land for 15 guineas to enable a highway to be created on such a route. Once that road was built, the licence for the inn at Rattlebank Hall adjacent to the High Gate was transferred to an old farmhouse opposite to become The Fleece, later Dick Hudsons.

At the time at High Gate there was a charge of nine pence in the pound to ratepayers in Bingley and Morton (including Eldwick) to maintain the new road. Pack horses were commonly used on local routes with diverse titles given to their leaders. 'Broggers' with ponies brought raw wool for cottagers to spin and weave by hand,

returning to pay for finished goods and carrying them to markets. 'Badgers' carried meal and malt from markets to sell to locals. 'Chapmen' and women travelled door to door akin to haberdashers with cloth, ribbons, lace, needles etc. in the saddlebags of the ponies. Then of course there were the 'Drovers' using the roads to move stock to markets.

In 1828, the late William Garnett of Lane Head, Eldwick was conveyed by horse litter to Bingley Parish Church for interment. Old Mr Wildman of Crag Farm at High Eldwick followed the cortege as a boy and recalled the tinkling of bells worn by pack horses passing his farm. At his Cragg Side farm, the house was built with local quarry stone and the lime for mortar came from Lotherdale near Skipton by saddleback ponies. The first Ordnance Survey of 1847 of Eldwick and Gilstead shows many routes marked simply as dotted lines, apparently tracks with names like Low Runngate and High Runngate. However, some lined routes are shown – from Eldwick Beck Bottom to Eldwick Hall – Stead Lane – today a snicket above the Acorn then over a stone clapper bridge over the beck and a green lane up past the Plantation to the main road – Mill Lane from above the Plantation down to Eldwick Corn Mill up to Tewett Lane and Heights Lane. All that was to change in 1861 with the Enclosure of Gilstead Moor.

The allocation of land within the award required means of access and so 'Occupation Roads' were constructed which had to be 'walled' by the allotments. Such roads were 18, 21 or 24 feet wide and examples were, the Gilstead to Morton Road (Warren Lane and Heights Lane), Sheriff Lane, Gilstead Lane End to Sheriff Lane. Houses and 'villas' appeared in the years immediately afterwards – Warren Park in 1862 (above Eldwick Primary School), Moor Edge in 1870 (was at the Warren Lane – Otley Road junction). Many others followed in Sheriff Lane, with Glen Road and Prospect Road being created and the illustration shows such buildings with the view from the bottom of Saltaire Road. By the time the next and second Ordnance Survey map was published in 1893, sadly after such a long time, Eldwick was shown to have been transformed from village to suburb. The rest of the story, as they say, may be history or common knowledge, depending on how old you are!



Yorkshire Countrywomen's Association

Hello Ladies

Our first meeting was held on Tuesday 14 September. This was attended by about 30 members. We also had 4 new members. Everyone enjoyed a cup of tea and a chat. We still tried to social distance from each other.

It has been decided by the Committee to start our meetings at 6.30pm during the winter, starting on 12 October 2021. It will also be our annual Bingo and Quiz.

There will be a Carol Service at York this year but travelling by coach will not be possible. More details to follow.

There will be a lunch for members at Oakwood Hall on Friday 19 November. More details to be given later.

New Members are always welcome. Please contact Bev on 01274 565077

GOOSE EYE BEER FESTIVAL

The Goose Eye Brewery Charity Beer Festival which was to be held on 7th/8th October has now been postponed due to unforeseen circumstances.



We deliver fresh, gift-wrapped flowers locally, 7 days a week with prices starting at £25.00+ delivery.

Beautiful Wedding Flowers
Funeral & Sympathy Flowers
Special Occasions Gift Wrapped Plants



Tel: 01274 563750

Flowers by Eldwick Post Office

INTERIOR PAINTING AND DECORATING



Also

PICTURE FRAMING

by *Chris Bettles*

21 Mansfield Avenue, Eldwick

Tel: 01274 510252

Mob: 07941 364274



BOND GARDEN SERVICES

SIMON BOND

ELDWICK
BINGLEY

01274 567439

07790 415593

janbond1956@gmail.com

HEDGES TRIMMED

MOWING & TURFING

TREES FELLED/PRUNED

FENCING/PLANTING

Five Rise Locks Hotel & Bistro

Come and sample our new Bistro Menu
Available from 6:30pm - 8:30pm

Family Events.

Available for Weddings, Parties, Funerals,
Family Gatherings and More.

Let our Family look after your family.

Christmas Menus now available

Telephone 01274 565296

Five Rise Locks Hotel, Beck Lane
Bingley BD16