

Eldwick Newsletter

Village Society

Issue No. 504 August 2021

ELDWICK & GILSTEAD GALA UPDATE

WE ARE ALL SET FOR GALA DAY SATURDAY 14TH AUGUST.

The field opens at 12 noon and the entertainment starts at 12.30.

Free entry This year to help speed up entry. Please give a donation before the day on our Just Giving page via facebook or cash at Eldwick Post Office. Fundraising target £5000 – at the time of writing we are halfway there. Thank you to the individuals and businesses who have already donated, your generosity is fantastic!

No parade this year - sorry. But the Phoenix New Orleans Jazz band will be there to welcome you in their usual style. Plus a new venture this year with a live music stage featuring local artists and Elvis will be there all afternoon! What a Photo opportunity!

Terrier racing will be in the arena with Wharfedale Terrier Racing – bring along your own speedy dog to take up the challenge.

Wolfie & Sophie from Bezerkaz Circus will be entertaining us around the ground.

The BBMF Dakota will make an appearance between 1 and 1.30pm (the RAF have rearranged as the Lancaster is in the garage !)

Georgia Murgatroyd, our Gala Queen, will be crowned after making an entry onto the field with her wonderful attendants. You have all been so patient waiting over 18 months for your big day.

Local dance & drama groups will be performing live in the arena, much better than Zoom!

An opportunity for you to take part in the Tug of War and Children's races,

Bingley Harriers are arranging the Fell Race to start at 3pm. 3+ miles up to the trig point and back in well under 20 minutes for the fastest runners. Registrations can be made on the day.

You won't go hungry either with the Village Society Burnt Bangers, The Church's Afternoon Tea, Ice Cream Van and lots of stalls selling goodies.

Fun for all the family with games, rides and stalls.

Thank you in advance for supporting the event and to everyone rearranging their diary this year.

Looking forward to a great day and raising funds for local children's organisations and charities within the community. Applications

for a donation can be made in writing to galaeldwick@gmail.com – please give details of your organisation and their needs.

Keep an eye on the Facebook postings for more details in the build up to the day.

2021 ELDWICK SCOUT & GUIDE FUN RUN

Friday 13th August starting at 7pm from the Memorial Hall.

A 1.5 mile fun run for all ages, Pre booked entries £3, late entries £4 on the day.

Entry forms available from the Eldwick Post Office.

To ensure we are able to keep safe distances etc. we ask that you wear a mask during the registration and number collection until the start of the race.

Registration of late entries will take place in the car park.

There will be a one way system through the memorial hall for you to collect your numbers for preregistered entries.

Runners please assemble on the Recreation ground before the start.

A medal for every finisher. A great evening for all the family.

Route from the Memorial Hall, Otley Road, Warren Lane, Moorcroft, Southway, Sheriff Lane, Glen Road, Saltaire Road, Otley Road to the finish opposite the Memorial Hall.

Get into training soon !

Thank you to the Village Society for providing a BBQ for us too.

Millennium Stone



Many thanks to Sally Robinson of Lighthouse Garden Design who has planted up the Millennium Stone. Carlton Nurseries have agreed to take on the watering whilst doing the watering of all the other displays in the village.

ELDWICK VILLAGE SOCIETY BEER AND BANGER FESTIVAL



This event is soon upon us on **20/21st August**. This is a very local festival and has been enjoyed by many over the years.

It will be the same format as before, opening at five o'clock on Friday night and again at 2pm on Saturday. There will be the usual generous servings of beautifully barbecued, award winning sausage, carefully cooked over charcoal and lovingly placed in a locally baked bun.

There will be approximately thirty locally brewed beers which will all be on handpump and priced very competitively.

Apart from the Hall and Birches Freehouse, there will be plenty of tented seating and tables outside. There will also be free entertainment in Birches during Saturday evening.

The Saturday afternoon tends to be more of a family event and we are told that is when the YAA helicopter will be landing unless, of course, it is called out. The YAA is the main beneficiary of this event.

Our thanks go to our barrel sponsors with our main one being Ric and Michele of Janus Interiors. Bob Greenwood of 'Bob's Barrel' fame is supporting us again. This gentleman suffered a heart attack some years ago and was treated by the YAA helicopter crew before being flown to LGL.

Tickets will soon be on sale at the Post Office and Birches Freehouse or just pay on the gate, where we will welcome 'plastic payment' throughout the event.

AT LAST – FASTER BROADBAND COMING TO BINGLEY

Good news, finally gigabyte internet for Eldwick. Enter the link below to get much more information:

<https://www.brsk.co.uk/locations/bingley>

BIRCHES

Open from 12 noon onwards

Saturday & Sunday

6 - 11pm weekly.

NOW SHOWING SKY SPORTS

Paul Rae C.A.R.P.E.T.S

Est. 1983

I'll bring sample to you!

Please call Paul on 07778 568845

Over 30 years experience & friendly advice

BINGLEY TOWN COUNCIL NEWS

Floral Displays

The floral displays in the town and village centres, supplied by Carlton Nurseries are now in place. Bedding plants provided by Bingley Town Council for the various village societies and community groups have been distributed and planted out. Thanks to the many volunteers who take part in this, Bingley is certainly blooming and looking very fine in the summer sunshine.

Friends of Bingley Pool

The Friends continue to meet with Officers and Portfolio holders at Bradford Metropolitan District Council to establish a way forward either to carry out all the necessary repairs and maintenance on the pool or to provide a new pool for Bingley. The proposed Community Asset Transfer cannot take place if the pool is not fit for purpose. The original modelling exercise by BMDC, which identified provision in the area, including the now defunct pool at Bingley Grammar School, is no longer valid.

Technology – Improving access to Council Meetings

The Council agreed the purchase and use of the 'Owl' technology and appropriate accessories in order to allow greater access for members of the public to observe and participate in all council meetings, without having to attend in person.

This will allow greater access and improve communication with residents.

Play in the Park

Free Play in the Park events will take place again this summer, provided by Bingley Town Council.

All sessions are from 11.00a.m. – 3.00p.m. Portalooos will be available at each event and a Mobiloo at both Myrtle Park sessions.

Dates and locations are as follows:

July 30th.	Gilstead Rec.
August 20th	Cottongley Rec
August 7th	Myrtle Park
August 27th	Eldwick Rec
August 13th	Crossflatts Rec
September	3rd Myrtle Park

Councillor Vacancy

Following the resignations of Councillor John Pennington and Councillor Michael Taylor, there are vacancies in the Crossflatts and Micklethwaite Ward and the Bingley Central Ward.

Electoral Services at BMDC post notice. A By-election must be held if 10 residents request this within the required time. If an election is not requested, then the Council must follow a process of Co-Option to install a new councillor.

Potential candidates who wish to stand as Independent councillors are encouraged to contact the council. There are many former and current Independent Councillors who will be able to offer help and explain the process. For further details and information please contact enquiries@bingleytowncouncil.gov.uk.

ELDWICK & GILSTEAD HORTICULTURAL SOCIETY – ANNUAL SHOW –

To celebrate the return of the Annual Show on Saturday 28th August, we have added new categories for 12 - 16 year olds as we try and encourage young horticulturalists. The show is open to everyone; you do not have to be a member.

Flowers – a jam jar posy from the garden.

Fruit and vegetable – Three of your five-a-day grown by you

Home produce – Four home-baked, decorated individual buns

Prizes will be awarded for first, second and third. The winner of each receiving £5.

For parents who want to have a go as well, our programme is on the Facebook page and there are plenty of open categories.

VOLUNTEERS WANTED

As we are able to open up and invite clients to groups to learn how to get online, we are keen to recruit new volunteers.

Josephine Loughran
Programme Manager

Carers' Resource II
Worth Connecting

Tel: 01274 449660
Mob: 07921 468095

www.carersresource.org

Carer Advice Line: 0808 50 15 939



Memorial Hall AGM

The AGM of the Eldwick Memorial Hall Trust Ltd. was held on Friday 2nd July.

The report for the year was generally good. The "estate" of the Hall, the Birches Freehouse building, the Tennis Courts and the car park were being kept in good condition although maintaining these buildings does take time.

The accounts were approved and the reserves are still healthy even though there had been little or no income from lettings, which is the only source of revenue. Bradford Council has been helpful with grants over the Covid period.

Bookings were now returning to normal with regular users and some new ones. The Hall will soon be available for social events and may be booked through Mark Truelove the Bookings Secretary 07926616687

The Directors were voted on as were the executive committee with the only changes being the retirement of Treasurer Pauline

Sibley. Mrs. Sibley was thanked by the Chairman who presented her with an impressive bouquet of flowers by Michele at Eldwick Post Office. She has been replaced by Richard Clarke. The Chairman also welcomed Gareth Ashton who has now joined the Board of Directors.

Memorial Hall planters. Many thanks to Michele of Eldwick Post Office for planting up the planters outside the Hall and thanks to Roger Galton of The Horticultural Society for providing the plants.

Free the pavements for pedestrians and prams

As I walk around Eldwick I think what were pavements made for?

At the moment we see:

Cars parked

Hedges and trees overhanging

I would have thought our local council would have put some effort into clearing the pavements so there is room to pass during these terrible times.

Also danger for school children crossing the Orchards road. There should be an island built to cut down on the danger.

Nick Chambers

The Zebra Appears

We understand that preparations are soon to start for the installation of the Zebra Crossing. The crossing is to be outside the Memorial Hall. The road needs resurfacing with non slip tarmac and this will be laid from the Warren Lane roundabout through to Spring Lane. We understand that the work will start on Sunday 15th August with road closure for planing and continue until Wednesday. There will be a system of traffic lights when the drains etc will be raised this will be followed by resurfacing from Sunday 22nd until Tuesday 24th when there will be some road closures.

The Beer and Banger Festival will continue throughout. The engineers at Bradford Council have been most helpful in supporting this event.



Janus INTERIORS

WINNER OF THE INDEPENDENT TRADER OF THE YEAR

KITCHENS, BATHROOMS
& BEDROOMS

For more information or to discuss
your project call:

01274 566100

Unit 1A Leonards Place, Leonard Street
Bingley, West Yorkshire BD16 1DP

www.janusinteriors.co.uk
info@janusinteriors.co.uk



JCH Electrical Services Ltd

Professionally covering all aspects of domestic
Electrical & Security work including CCTV

Over 35 years professional experience in the
electrical industry

Approved installer of Smart Electric Vehicle
charging points

City & Guilds trained

Tel: 01274 511433 (Eldwick)



Approved Charge Point Installer



Government Endorsed Quality

LAWN KEEPER

PROFESSIONAL LAWN CARE

www.lawnkeeper.co.uk

j.cubitt@lawnkeeper.co.uk

01274 551565 | 07498 297033

In Memoriam

It is with enormous sadness that we report the death of **ALLAN DAVID SHUTT**.

Allan ran The Newsdesk at 41 Otley Road, Eldwick (now a private house) for a number of years in the late 1970s and early 1980s. Some of you older readers may fondly remember Allan for some of his Newsdesk promotions such as his annual Christmas Shows in the Memorial Hall. At that time, in addition to The Newsdesk and the Post Office, Eldwick village centre also had a butchers, bakers, greengrocers, hairdressers and garage services.



Allan grew up in Shipley and attended Bradford Grammar School. An accomplished opening bat, he played cricket for Saltaire Cricket Club First XI in the Bradford League.

After leaving The Newsdesk in Eldwick, Allan bought The Nelson Inn, Skipton Road, Harrogate and later ran other pubs in Ferensby and Birstwith, North Yorkshire. Following his passion for sport, he then worked as a golf professional, both teaching and playing. Allan returned to the pub trade at the The Station, Ribbleshead alongside the famous viaduct on the Settle to Carlisle Railway. His final project was to be at the Royal Shepherd Inn, on the canal side in Skipton.

Allan Shutt died suddenly from a heart attack on 22 June 2021 at home, The Royal Shepherd Inn, Skipton.

NEWS FROM THE ELDWICK CHURCH

Worship: From Sunday July 25 we will be worshipping with no restrictions on numbers and with no need to book to attend. However, we request as a courtesy to others that attendees continue to wear a facemask. We have resumed Holy Communion at our 09.15 am services at the beginning of each month: forward dates are 1st August, 5th September and 3rd October.

The Church Link Café will continue to open on Tuesdays from 9.30 am – 12.00 noon for tea, coffee, scones and cake and on a Thursday from 10.00 am – 1.30 pm, with light lunches served after 11.30 am. We will carry on with table service, and request that people wear a facemask unless they are seated.

Gala: Café will run on Gala day with seating indoors and outside.



Church in the Garden: For those of you who have had a peek at the plot, you will have seen the garden area has been cleared of the worst of the rubble, brambles, and rogue saplings. Two raised beds are now built and lined, with the first bed planted up with a variety of vegetables and flowers. The second bed awaits finishing with the soil and lots of plants waiting to be planted. Work has started on the sensory border which will be situated by the fence which divides the car park from the garden. Whilst we want this area to be somewhere for everyone to visit, it is still not even underfoot or anything much to look at. As we progress, we are hoping to set up some gardening sessions for folk who might want to come along and enjoy a bit of company, even if it's to sit and watch! Right now, we need a hand

with the heavy digging and preparing the planting areas so if you can help, we would love to hear from you.

Thank you for the generous donations of money and plants; it is very much appreciated and needed to make this project move on. If anyone has a water butt / watering cans or garden canes they don't want, please get in touch.

We will be holding a plant stall on the lawn on Gala day to promote the garden and raise funds. If you have any plants we can sell, please get in touch with Julie, 07591 430501 or email juliesmithwyn@outlook.com

Contact us if you would like us to pray for you or for someone in need. Prayer requests can be submitted to prayer@eldwickchurch.org.uk where they are forwarded anonymously to our prayer team. For general enquiries, please email office@eldwickchurch.org.uk or telephone 01274 422015.

You can keep up with everything we're doing on **Facebook** @TheEldwickChurch, **Twitter** @EldwickChurch; or on our website <http://eldwickchurch.org.uk>

In Memoriam

ANN TRUELOVE

October 1940 to June 2021

The Family of Ann Truelove would like to express their appreciation for everyone's sympathy as we mourn her loss.

The shared memories from all of you at the funeral along with cards and words of condolence meant a great deal to us all.

We would like to thank the Doctors and Nurses of Airedale Hospital for all they did for her during her final hours.

To the Undertaker David Nunn for arranging the Funeral. The Eldwick Church and the Rev David Griffith for conducting the service.

To everyone who reached out to the family during our time of mourning, we are grateful for their continued support during our time of need

All who knew her will miss her, may she rest in peace.

Cullingworth Village based family business

Fresh Eggs **Fresh Milk**

Pattison Milk & family favourites

Fresh Orange Juice

Milk sourced locally from Milner Field Farm Gilstead

t: 07427 762966

WILKINSON & WHITLEY LTD.

ALL MODEL SERVICING MOT TESTING

TYRES BATTERIES

BRAKES WELDING

EXHAUSTS ALL MAKES

AIR CON. REPAIRS SERVICE LIGHT RESET

LIME STREET, BINGLEY 01274 562787

PETER MARRIOTT PROPERTY SERVICES

Professional Interior Painting & Decorating. Please call to discuss your requirements.

Free estimates & advice.

No job too small

A friendly, reliable and professional service

07985 050543
01274 510969

Simpson's Electrical of Bingley

✓ Rewires ✓ Sockets ✓ Inspections
✓ Lighting ✓ Alarms ✓ Telephone
✓ Testing ✓ TV & Audio ✓ Faults

- Est. 1995 - Reliable & Prompt Service
- Family Run Business
- Free Estimates & Expert Advice
- Work Carried Out With Care & Guaranteed

Over 75% Of Our Work Is Through Recommendations!!

01274 563794
www.simpsonselectrical.com

aaaaa Simpsons Electrical

Shama BINGLEY

Indian & Kashmiri Cuisine
Open 7 days from 5pm - 11pm
Early booking essential

Clarke House, Keighley Road
Bingley BD16 2RD
Telephone 01274 563 777
www.shamabingley.co.uk
Email: info@shamabingley.co.uk

ANDREW M ELLERSHAW

Independent Family Funeral Director & Memorial Masonry Consultant

Bingley Chapel of Rest, Church Street, Bingley, BD16 2PU

Supporting the bereaved for over 30 years. Providing a Caring, Professional & Dignified Service. Independent and Family Run

Private Chapel of Rest

Simple, Traditional & Modern Funerals.

Pre-paid Funeral Plans. Memorial Masonry Services.

We are available anytime day or night



Telephone 01274 551555

www.aefuneralservices.co.uk

email: andrew@aefuneralservices.co.uk



Andrew Tracey Plumbing and Heating Services (Eldwick)

- Central Heating Systems
- Boiler Exchanges
- Bathroom Installations
- Tiling
- General Plumbing

Tel: 01274 967710/07799536605



211677



WHOSOEVER DID WHATEVER WHEREVER AND WHEN?

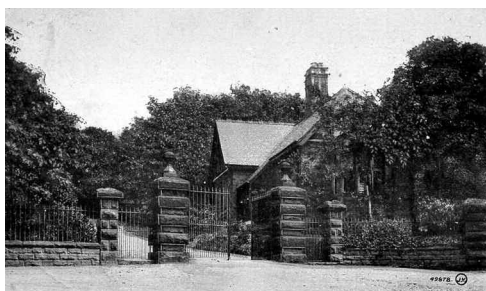
A STORY OF INTRIGUE

Many people already know the simple facts behind the creation of Prince of Wales Park as a People's Park. The first meeting being held in 1859, the site confirmed in 1861, first sod dug in 1863 and grand opening in 1865. Press reports cover significant events and archived records provide simple information but, whilst AGM meetings of a Prince of Wales Park Committee were advertised, no minutes from such annual meetings or indeed from any of those committee meetings are to be found. It is thanks to the reports in the Keighley News that details were given.

There never were any original plans for the layout of the park so only the Ordnance Survey maps 1893 and subsequent editions show precise details of the paths and drives. How was the rough ten acre piece of moorland, allotted to the Labouring Poor, landscaped and terraced into what is seen today? Indeed, a letter from a disgruntled correspondent in the Keighley News asked how such rough moorland in 1865 came to be named a park and it was an insult to His Royal Highness to link his glorious name – the Prince of Wales, to such a wilderness? In a similar way, how were the other eight acres, partly comprising an abandoned late 18th century sandstone quarry, previously allotted to the Tolson sisters, (purchased by public subscription – exact cost unknown), be transformed into a Grand Ariana with more terraced gardens on the slope below?

According to the Registration of Deeds held in the new West Yorkshire History Centre, Kirkgate, Wakefield, the transaction between Agnes and Anne Tolson to the trustees of Prince of Wales Park of the eight acres raises another question regarding dates. It was to the Churchwardens and Overseers of the Poor that the 10 acres on Brown Hill in Gilstead Moor was allotted in 1861 for the Labouring Poor. However, as listed in the Registry, it was on 8th March 1869 that those eight acres are recorded as being transferred by the Tolsons to the 21 Trustees of the Prince of Wales Park – four years after the park was opened? Those trustees included six major Bingley landowners – Ferrand, Garnett, Harris, Sharp and Laycock, the Vicar and Baptist Minister plus seven ratepayers – grocer, stonemason, iron founder, woollsorters and druggist. Imagine that diverse group of rich and not so rich local townspeople meeting together in unison!

The committee, records yet to be found – had to work within the parameters of two other organisations, the Bingley Local Town



Board (1865-1898) and the Bingley Improvement Commissioners (1841 – 1895 and records are available for both. The Local Board was akin in some ways to a modern Local Council but the Improvement Commissioners were, as in their title, responsible for roads, buildings, services, all beyond the brief of the Board. Within the BIMP volumes of information there are both records of work planned and completed but also aspirations.

In 1863 a Work Plan was formulated in which overlookers in work places were to be district collectors to take from the operative classes the money required to finance the 'breaking up and laying out of the land before decorating with planting.' It was said that good walks within the park could be two miles in length. 2520 yards would be one and a half miles so the 3500 yards could be divided up into 35 lengths of 100 yards. These would have 35 men supervising 25 workers so 875 men could do the job four Saturday afternoons. It would take one man 1750 days or 290 weeks or 32 months. Pay for workers would be 2/6d each, adding up to £215/8/-. By 1865 it was said that 1500 trees had been planted, 1450 yards of walks laid and 'the Ariana cleared out and would now contain 100 persons'. The grand opening of the park would be on Whit Sunday 6th June 1865 yet by 1872 'the park still looks rough and unfinished'. In 1886, following a new Public Health Act, the BIMP were allowed to borrow money, which they did, applying for £1000 to be repaid over three years. This led to the construction of the park's lodge.

It was humorous, when the park was likened to the mansion estates of Bingley when a suggestion was made that, since the park had five entrances there should be five lodges? It was decided to build the single lodge, at the main entrance on Lady Lane. On the land opposite later it was proposed that, with the adequate spring water flow from the source which fed the Drinking Fountain, two lakes could be constructed for bathing in summer and skating in winter, facing Lady Lane. Having described the Ariana as a kind of place for entertainment, there was another

proposal for bathing there instead. This did not happen and consequently in 1867 an interesting advert appeared in the Keighley News. It was for a Prince of Wales Bathing Pool – to be situated in the small dam of the old Eldwick Corn Mill! This was at the end of today's Green Lane, beyond The Acorn Inn. Two years later the mill was offering boarding accommodation for one shilling weekly.

When the Nicholson Plinth was unveiled in the park in 1870, carrying a bust of the Airedale Poet, a great compliment was paid to the achievement of creating this People's Park. One of the guests of honour referred to the need of providing such recreation grounds for workers. He said 'the princely Baronet of Saltaire' and Sir Francis Crossley of Halifax had created such and Bradford had bought a park ready made for them. In the 1880s band concerts took place, regular Galas were very popular during the annual Bingley Tide week. The imposing stone pillars were erected beside the Lodge together with gates and ornamental railings so that the park could actually have formal opening and closing times. There used to be a large bell hung on the Lodge, rung at closing time.

Story Stone Field

We have been informed that following the removal of the trees and "replanting" that the occupants of adjacent properties have been sent letters from the Council to inform them that the Police have now been involved in an investigation and they will be made aware of any further damage. Also the Council states that trees would be replanted and surrounded by fencing. The problem is that not many of the original 60 'whips' left on the field. There have been a large number of the plastic protective tree guards stuffed in the bin. The Forest of Bradford have been contacted for more 'stock' because the next requests to the Woodland Trust are aimed at November planting.



We deliver fresh, gift-wrapped flowers locally,
7 days a week with prices starting at
£25.00+ delivery.

Beautiful Wedding Flowers
Funeral & Sympathy Flowers
Special Occasions Gift Wrapped Plants



Tel: 01274 563750

Flowers by Eldwick Post Office

INTERIOR PAINTING AND DECORATING Also



PICTURE FRAMING

by *Chris Bettles*

21 Mansfield Avenue, Eldwick

Tel: 01274 510252

Mob: 07941 364274



BOND GARDEN SERVICES

SIMON BOND

ELDWICK
BINGLEY

01274 567439

07790 415593

janbond1956@gmail.com

HEDGES TRIMMED

MOWING & TURFING

TREES FELLED/PRUNED

FENCING/PLANTING

Five Rise Locks Hotel & Bistro

Come and sample our new Bistro Menu
Available from 6:30pm - 8:30pm
Family Events.

Available for Weddings, Parties, Funerals,
Family Gatherings and More.

Let our Family look after your family.

Christmas Menus now available

Telephone 01274 565296

Five Rise Locks Hotel, Beck Lane
Bingley BD16