

Eldwick Newsletter

Village Society

Issue No. 502 June 2021

ELDWICK & GILSTEAD GALA NEWS

STILL LOOKING GOOD FOR SATURDAY 17TH JULY 2021

Wonderful news – the Phoenix New Orleans Jazz Band will be on duty – we are looking forward to their fantastic music.



Get your fancy dress outfit ready for the Masquerade – everybody is invited to dress up for Prizes!

The Gala raises over £2000 each year for local children's activities you can help achieve this by contributing on-line via our Facebook page. Eldwick & Gilstead Gala.

Free entry this year. (We won't be having a programme) please contribute via our Facebook page to the Gala Fund. There will be some collection buckets around too.

The Gala Queen and her party will arrive on their decorated vehicle ready for the 1.30pm crowning ceremony.

Terrier racing will be the feature of the afternoon – with a chance to enter your own family pooch. Start that training! What can be easier than running in a straight line.

There will be lots of things to do – Donkey Rides, Races, Fancy Dress Masquerade for all, Dancing, Entertainment, Terrier Racing, Fell Race, Rides, Burnt Bangers, Cake, Stalls, Music, Ice Cream & Sunshine.

Bingley Harriers will be putting on the Fell Race too for the more serious runners. 3+ mile up to the trig point on Baildon Moor and back again in under 20 mins!!

To book a stall or to volunteer to help on the day email galaeldwick@gmail.com or message our Facebook page - Eldwick & Gilstead Gala

A few things to keep the day as safe as we can:

- To keep things safe we won't be having the parade this year - but there will be music
- To avoid the crowds at the entrance - we will open the field from 12.30pm.
- There will be our very own Q-code to scan with your phone.

(The Gala Pet Show and Discos will make a return in 2022 as indoor events.)

2021 FUN RUN

The Scout & Guide Fun Run will be on Friday 16th July at 7pm the evening before the Gala.

(Just the 1.5 mile run this year, Pre-booked entries £3, £4 on the day). A medal for every finisher.

Route from the Memorial Hall, Otley Road, Warren Lane, Moorcroft, Southway, Sheriff Lane, Glen Road, Saltaire Road, Otley Road to the finish opposite the Memorial Hall.

Get into the training soon!

Welcome back BBQ



Despite the weather we had an extremely good turnout for this, the first Eldwick Village Society event of the year. Fortunately there were plenty of gazebos with seats and tables all socially distanced. We attracted a brilliant crowd mainly of families which gave a very pleasant community atmosphere. It was excellent to see so many old (and young) faces again.

The products of Ilkley, Saltaire breweries and a local wholesale butcher helped the event along nicely

The barbecue was a bit of an experiment offering a broad menu even including some vegan food. There was one, rather unkind, comment that the efforts of the barbecue team were comparable to a combination of Julie Waters in the famous "two soups" sketch and 'Allo 'Allo. This did not include June and Mary in the kitchen who were doing a stirring job. However, we managed to sell out and make a profit which will probably go toward our efforts to get beyond the fifty thousand pounds we have already raised for the Yorkshire Air Ambulance. We also make donations to local organisations.

Our next "gastronomic event" will be the Fun Run followed by the Gala.

STORYSTONES TREE PLANTING

Volunteers planting trees at Storystones field in a deluge on Saturday 8th May. Full story back page.



GILSTEAD PO NEWSLETTERS

Thanks to Andrew at the Gilstead Post Office, the Eldwick Newsletter will be available there at the beginning of the month.



We deliver fresh, gift-wrapped flowers locally, 7 days a week with prices starting at £25.00+ delivery.

Beautiful Wedding Flowers
Funeral & Sympathy Flowers
Special Occasions Gift Wrapped Plants

f Tel: 01274 563750
Flowers by Eldwick Post Office

Paul Rae C.A.R.P.E.T.S

Est. 1983

I'll bring sample to you!

Please call Paul on 07778 568845

Over 30 years experience & friendly advice

BIRCHES

Open from 12 noon onwards

Saturday & Sunday

6 - 11pm weekly.

NOW SHOWING SKY SPORTS

BINGLEY TOWN COUNCIL NEWS

The remote meeting of the Full Council on 27th April marked a year since the first council meeting held by Zoom in April 2020. Who would have predicted that we would still be meeting remotely in 2021?

Bingley is looking particularly gorgeous in the spring sunshine. The cherry blossom along Bradford Road brings joy every year and there are signs of hope that there is light at the end of the pandemic tunnel.

By 15th April 50% of residents had received their first vaccination and the programme continues to progress. Residents of age 70+ will start to receive booster jabs in September. If you are an unpaid carer for a vulnerable person and need PPE equipment, Bradford Metropolitan District Council can provide this free of charge. Tel 01274 431000 for details.

The town council looks forward to two new councillors being elected to the Priestthorpe Ward on 6th May. Recently Councillor John Brazendale resigned from his role as Councillor for Crownest Ward. Bradford Metropolitan District Council Electoral Services will shortly post notice of the vacancy and an election may be requested by ten voters.

Ruth Batterley the Town Clerk, left Bingley Town Council to work at Ilkley Town Council on 16th April and she takes with her the gratitude of the Town Council for her service and dedication to the town. Tracy Predeth is the current Locum Clerk who has taken on Town Clerk duties in the interim. It is expected that a new Town Clerk will be appointed soon and we look forward to the staff being returned to full strength in the near future. A new Deputy Clerk, Nicola Mansfield Smith began work on 26th April and we warmly welcome her to the town and the team.

The Annual Town Meeting will take place on Tuesday 4th May via Zoom at 6.00 pm. Details at the end of this mailing. The Speaker will be Edith Grooby, Recycling Manager at Bradford Metropolitan District Council. She will give a presentation on "Let's Talk Rubbish". Groups which have received grants through the Town Council Grants Scheme will report on the progress of their projects. All residents are invited to attend.

Plans for a return to face to face meetings are well in hand and details of how residents can access future council meetings will be published via the website and social media.

Befriending Service

The Town Council heard a presentation from Joy Mills on this very worthwhile scheme, which is a partnership scheme between HALE and CABAD, supported by the National Lottery. During the pandemic, there has been a steep rise in the numbers of people requesting and using the telephone befriending scheme. Volunteers are needed for befriending in person as the national situation changes. Please contact Joy at iovmm@cabad.org.uk or tel 07422966141 for further information.

Markets

The first market of the year took place on April 3rd and attracted a welcome return of shoppers to the town centre. The May 1st market included craft stalls and BeCycling as well as food produce and proved to be a popular event.

Litter Pick

Litter Picks in the town will resume on Saturday June 26th 10.00 am. Meet at the Council Office (The Hub)

Bingley is fortunate in that we have a large number of Litter Champions who work tirelessly in their own time to look after their 'patch'.

If you'd like to be a Litter Champion, please contact either your Ward Councillor or Ruth Thompson Administration Officer at a.o@bingleytowncouncil.gov.uk

Play in the Park

We are pleased to announce that six Play in the Park sessions will return in the school summer holidays to each of the local parks. Dates to be confirmed.

ZEBRA IN ELDWICK

In response to Mr and Mrs Oldfield's letter re the above, let's hope the Zebra has more luck crossing the road than people.

Well done to those who campaigned to get this, assuming it is just a zebra crossing? What's really needed are pedestrian lights, people will still take their life in their hands if they wrongly assume some of the idiots who think they're driving on Silverstone are going to respect a zebra crossing. Let's hope all still take care and assume nothing.

Fully understand why the crossing is being situated where it is but agree with the Oldfields that the race from the, to be, newly sited zebra crossing down to the Warren Lane roundabout will continue unabated, certainly another crossing of some sort would help protect the children from lower down the village get safely across the road to walk to Eldwick Primary.

You never know perhaps some of the councillors who become more active near to local Election time might take up the cause ?

Bob Harrison, Glen Road

NEW CHAIR PUTS YOUNG PEOPLE AT MARTIN HOUSE AT EASE

A £1,500 donation from Bingley Rotarians will help buy a specialist chair to enable young people to sit comfortably when they stay at Martin House Children's Hospice.

The Lento care chair – which is fully adjustable to support the complex needs of children and young people with disabilities – has been bought with the money donated by Bingley Airedale Rotary Club.



Pictured: Chris Verney, Regional Fundraiser for Martin House (left), and Rotarian Michael C. Heaton, Service Group Chairman of Bingley Airedale Rotary Club.

The donation was made in memory of Tom Bairstow, an active Rotarian in Bingley and a community ambassador for Martin House. Tom Bairstow was a long time Eldwick resident who was well known for his fund raising.

Chris Verney, regional fundraiser for Martin House, said: "We're very grateful to Bingley Airedale Rotary club for this generous donation, as a fitting way to pay tribute

to Mr Bairstow, who was a great supporter of Martin House. "Being able to provide this kind of specialist equipment helps us ensure that we meet the individual needs of children and young people staying at Martin House." The club also donated the Oxford Textbook of Palliative Care for Children, to be used by doctors at the hospice, which hosts one of three specialist training places for consultants in paediatric palliative medicine.

Martin House cares for babies, children and young people with life-limiting conditions from across West, North and East Yorkshire, including planned respite, emergency and symptom control care, end of life care, care after death and bereavement support. It costs nearly £9 million a year to run, and relies on fundraising and donations for nearly 90 per cent of its income, which has been hit by the pandemic. In the last 12 months it lost around £2.2 million in fundraising income, and expects to lose more money in the coming 12 months.

Michael C.Heaton, of Bingley Airedale Rotary Club, said: "We are extremely happy to make this donation in memory of our Rotary colleague Tom Bairstow."

To find out more about Martin House and how to support it, visit www.martinhouse.org.uk.



Janus

INTERIORS

WINNER OF THE INDEPENDENT TRADER OF THE YEAR

KITCHENS, BATHROOMS
& BEDROOMS

For more information or to discuss
your project call:

01274 566100

Unit 1A Leonards Place, Leonard Street
Bingley, West Yorkshire BD16 1DP

www.janusinteriors.co.uk
info@janusinteriors.co.uk



JCH

Electrical Services Ltd

Professionally covering all aspects of domestic
Electrical & Security work including CCTV

Over 35 years professional experience in the
electrical industry

Approved installer of Smart Electric Vehicle
charging points

City & Guilds trained

Tel: 01274 511433 (Eldwick)






Approved Charge Point Installer







LAWN KEEPER

PROFESSIONAL LAWN CARE

www.lawnkeeper.co.uk

j.cubitt@lawnkeeper.co.uk

01274 551565 | 07498 297033

ELDWICK & GILSTEAD HORTICULTURAL SOCIETY

John Kettley said a couple of years ago "we no longer have seasons we just have weather". How true.

Many of us have greenhouses, window sills, conservatories and dining tables full of seedlings bolting, waiting for a frost free night. Finally they are here. We can no longer rely on April showers (we had one rainy day) or sunny summers for ripening so we have to adapt. I'm sure that will not stop us complaining or discussion intensely throughout the year.

In the dry April, I traded my slimline waterbutt for a larger 210 litre and added the slimline to the end of the posting shed ready for seedling watering. I'm thinking of where I can put a third one as well.

I have used the hot bin for the last year which looks for neater than the old fashioned Darlek if you don't have much space and can also have cooked food waste added as it is a sealed unit. It works faster than the traditional methods if you feed it well. I used a couple of old windows over seed trays, bubble wrap from the inordinate number of parcels that arrive to keep plants warm and treated myself to a mini greenhouse for the veg plot, which can be put away in the loft until winter now.

Eco-friendly, carbon neutral and climate change are all buzz words at the moment. We, as gardeners have been doing it on the quiet for years. Set yourself a challenge and do something different in the garden this year. Come and tell us about it at the Annual Show which is being planned for Saturday 28th August and will be a bonanza after missing last year.

TAYLOR Stephanie Jayne

On 14th May at home, after an illness borne with much courage and great dignity. Steph, aged 58 years with family by her side.

A devoted, immensely loved mother to Penny and Danielle, wife of Andrew, mother-in-law to Andy and Matt, supportive sister of Lesley, a dear auntie, great auntie, niece, cousin and hugely popular, positive spirit and life long friend to many in the local community.

The funeral service and cremation will be held at Nabwood Crematorium, Bradford on 2nd June at 09.30am. Attendance by invite only due to current restrictions. If you would like to pay your respects on route, the funeral procession will pass by Oak Glen Surgery, Eldwick at 9.15am.

Donations in lieu of flowers to Ovarian Cancer Action, Bosom Buddies UK and Sue Ryder Manorlands Hospice c/o David Gallagher Funeral Services, Skipton Road, Uteley. (Tel: 01535 690979).

Cullingworth Village based family business

Fresh Eggs

Pattison Milk
& family favourites

Fresh Milk

Fresh Orange Juice

Milk sourced locally from Milner Field Farm Gilstead

t: 07427 762966

PETER MARRIOTT PROPERTY SERVICES

Professional Interior Painting & Decorating.
Please call to discuss your requirements.

Free estimates & advice.

No job too small

A friendly, reliable and professional service

07985 050543
01274 510969

NEWS FROM THE ELDWICK CHURCH

Welcome and Welcome Back!

Did you plant a knitted prayer flower in the Church garden last year? Perhaps you came at Christmas for our outdoor Light-Up Nativity? Maybe you've been watching our informal Sunday services on YouTube or listening to our 'Eldwick Church in the Community' podcast? Or perhaps you're simply interested in what goes on at church. **Whichever is the case, we warmly invite you to join us on Sunday 27th June!**

Should everything go to plan with the roadmap out of lockdown, we hope to re-open our doors and welcome everyone on 27th June – either for our 10.30 am Morning Worship, or for refreshments that afternoon from 2-4 pm.

Come and be part of YOUR local Church; meet some of our people and say 'hello'.



Can't make it on the day? Call into our **Link Café** which is now open indoors on Tuesdays (9.30 am – 12.00 noon) and Thursdays (10.00 am – 1.30 pm). On Tuesdays we serve hot and cold drinks, home-made cakes, and scones. On Thursdays we also offer light lunches from 11.30 am. The café is run by volunteers and if you would like to join the team, please contact either Julie Smith 07591

Bingley Arts Centre

We are finally open again, though still some distancing. Also Covid restrictions in place with extra cleaning and ventilation system on. So it could be cold bring a coat. Note no Tea/Coffee or bar to start with until we can open them safely.

- June 1 – Sue Woodcock – Yorkshire Post columnist gives her talk "Copper to Shepherd" 2:30pm
- June 8 – Community Cinema – Military Wives 2:30pm
- June 15 – Community Cinema – Stan & Ollie 2:30pm
- June 22 – Community Cinema – Chicago 2:30pm
- June 26 – Live screen event – Kinky Boots 7:30pm
- July 3 – Live screen event – 3 Tenors 7:30pm
- July 6 – Community Cinema – Downton Abbey 2:30pm
- July 10 – Talking Stock Theatre presents the Comedy "Cows fields of Slack Bottom" 2:30pm and 7:30pm
- July 16 – Live screen event – 42nd Street 7:30pm
- July 17 – Live screen event – Ball & Boe

WILKINSON & WHITLEY LTD.

ALL MODEL SERVICING **MOT TESTING**

TYRES **BATTERIES**

BRAKES **WELDING**

EXHAUSTS **ALL MAKES**

AIR CON. REPAIRS **SERVICE LIGHT RESET**

LIME STREET, BINGLEY **01274 562787**



Indian & Kashmiri Cuisine
Open 7 days from 5pm - 11pm
Early booking essential

Clarke House, Keighley Road
Bingley BD16 2RD
Telephone 01274 563 777
www.shamabingley.co.uk
Email: info@shamabingley.co.uk

430501 or Susan Rishworth 07811 699579.

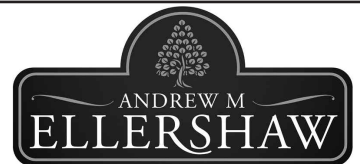
When you're visiting, do have a wander through the car park and find the goings-on at the back of Winston Grange! This is our new 'Church in the Garden' project; an initiative to convert the wilderness at the back of the vicarage into a garden for the whole community to share – old and young, of all abilities. We have been raising money for this project and are moving forward with the help of some welcome donations from individuals, and a grant from the All Churches Trust as part of its 'Hope Beyond' programme. The total estimated cost is around £15,000 and we still have a way to go, so all donations are very welcome. If you would like to donate to the garden fund, there is a link on the homepage of our website: eldwickchurch.org.uk.

Do contact us if you would like us to pray for you or for someone in need. Prayer requests can be submitted to where they are forwarded anonymously to our prayer team.

For general enquiries, please email or telephone 01274 422015.

You can keep up with everything we're doing on **Facebook @TheEldwickChurch**; **Twitter @EldwickChurch**; or on our website <http://eldwickchurch.org.uk>

- July 21-24 Bingley Little Theatre presents an evening of comedy and song "A Time to Move On" 7:30pm
 - July 27 – Community Cinema – Little Women (2019) 2:30pm
 - July 27 – Bingley Little Theatre season 74 launch evening. Come and see what is coming up and look behind the scenes, get involved.
 - July 30 – Local singers the Haley Sisters 7:30pm
- Full details on our website bingleyartscentre.co.uk tickets available telephone or in person at our box office open 10am-1pm Mon-Fri 01274 567983 or online. Box office may open longer hours if there is demand.



*Independent Family Funeral Director
& Memorial Masonry Consultant*
**Bingley Chapel of Rest, Church Street,
Bingley, BD16 2PU**

Supporting the bereaved for over 30 years.
Providing a Caring, Professional & Dignified Service.
Independent and Family Run
Private Chapel of Rest
Simple, Traditional & Modern Funerals.
Pre-paid Funeral Plans. Memorial Masonry Services.



We are available anytime day or night

Telephone 01274 551555

www.aefuneralservices.co.uk

email: andrew@aefuneralservices.co.uk



Andrew Tracey Plumbing and Heating Services (Eldwick)

- Central Heating Systems
- Boiler Exchanges
- Bathroom Installations
- Tiling
- General Plumbing



211677

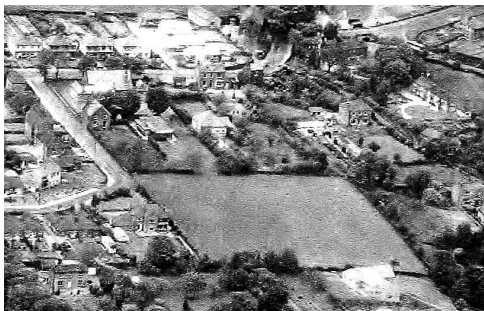


Tel: 01274 967710/07799536605

ONCE - TWICE - OR THRICE?

A SAGA OF STORYSTONES FIELD

In recent years the large field, accessed by a driveway in Lyndale Road, from Otley Road, has become something of a hidden gem despite being freely available to any members of the public. Doubtless, former pupils of the 'old' Eldwick School, will well remember this lovely location as their playing field. Indeed there still is a link, in its management being in the control of Bradford Council's Education Services, the field being classified as Recreational. As usual in Eldwick's 19th century history, it was the 1860 Enclosure Act which awarded land taken from the moor to become fields



For decades the field which was to become the site for the school was merely additional grazing land for local farmers and did not officially become linked to the school until much later. In 1877 the Eldwick Board School was opened near the then centre of the village. Eldwick Primary School, as it became known, continued to expand, including the acquisition of the Playing Field in 1957. But what of the Story Stone? Too far from the former quarry in Saltaire Road, it has the appearance of such large rounded boulders seen in the base of local field walls. Maybe that kind of stone was a boundary marker in the bottom left corner of the field, prior to the construction of a wall? It was adopted by the school as the ideal point on the field from which lovely stories could be told by teachers to the surrounding children. Happily, when Eldwick Primary School relocated to Warren Lane in 2002, so too did the Story Stone, bearing a commemorative plaque and is still in use.

Major events, as well as daily use in the school week, took place on the field for the school and the community. This was highlighted in 1977 for the Centenary celebrations with the most famous former pupil, Sir Fred Hoyle. At a further significant community gathering in 2011 to commemorate the Diamond Jubilee of Her Majesty the Queen, the village joined a appeal national appeal. Local efforts were to be arranged, one of which was planting trees to celebrate. In collaboration with the

Woodland Trust who supplied the English bred saplings, one hundred were planted by schoolchildren and local families on Story Stone field, all participating children receiving official certificates dated Sunday 20th November 2011.

All the trees, Hawthorn, Hazel, Birch, Blackthorn Rowan, and Oak were planted in two areas, one in front of the northern boundary of the field (in the direction of Otley Road), and the other along the eastern boundary above Saltaire Road. One oak came from a Royal Estate. All prospered well, as the field is known to have some watercourses. The plastic guards kept the rabbits away and the land between the growing trees was allowed to go wild. All went well in 2002 when the school moved to Warren Lane and the Story Stone houses were built together with a later property development adjacent to the old school took place. Notification was later circulated that, where there had been 50 semi mature trees, planted by children, and the community, along the northern boundary there was then a complete strip of bare earth with neither trees nor undergrowth to be seen. Bradford Council was informed and the community were told in response that 'the matter has been passed to the Legal Department'. Sadly, despite some specific enquiries, by that department, no outcome or answers were forthcoming.

The Eldwick Community allowed matters to rest until there was mention of the forthcoming Platinum Anniversary of Her Majesty the Queen. It was then resolved that a further number of saplings, again from the Woodland Trust, would be ordered for planting in exactly the same site as some of those of 2011. So it was that a hardy small band of volunteers, including four willing Soroptomists, Saturday 8th May 2021, in pouring rain, carried out the planting. Actions were guided by the knowledgeable former head of the Brackenhill Countryside Centre on Shipley Glen. His expertise, not just in the way of planting but also the careful selection of which trees needed to be planted in a certain positions, to benefit from cross pollination, etc.



Photography to record the occasion was difficult due to the conditions but on Monday 10th May, a sunny morning, there was a chance to take better pictures. The site did not look as it had done on the Saturday. Four trees had been 'relocated' to the far southern end of the field and twenty one saplings had similarly been taken out from the northern corner and replanted in standing water along the eastern boundary, all species now unknown. An officer from Bradford Council had visited the site three days before the arranged planting date to verify the exact location on the northern boundary intended for the new trees. Confirmation was given and it is now that officer who has stated that the Council had no involvement or awareness of the situation that had evolved. The officer has stated that 'robust action will be taken' and 'that the matter had been escalated to senior management and to local councillors', in order try ascertain how the situation arose and to prevent any further damage, should the trees be replanted once more.

Thus 'Once' means the 2011 planting, 'Twice' the recent planting and 'Thrice' is in abeyance.

Allan Mirfield

INTERIOR PAINTING AND DECORATING



Also

PICTURE FRAMING

by *Chris Bettles*

21 Mansfield Avenue, Eldwick

Tel: 01274 510252

Mob: 07941 364274



BOND GARDEN SERVICES

SIMON BOND

ELDWICK
BINGLEY

01274 567439

07790 415593

janbond1956@gmail.com

HEDGES TRIMMED

MOWING & TURFING

TREES FELLED/PRUNED

FENCING/PLANTING

Five Rise Locks Hotel & Bistro

Come and sample our new Bistro Menu
Available from 6:30pm - 8:30pm

Family Events.

Available for Weddings, Parties, Funerals,
Family Gatherings and More.

Let our Family look after your family.

Christmas Menus now available

Telephone 01274 565296

Five Rise Locks Hotel, Beck Lane
Bingley BD16



Simpson's Electrical of Bingley

- ✓ Rewires ✓ Sockets ✓ Inspections
- ✓ Lighting ✓ Alarms ✓ Telephone
- ✓ Testing ✓ TV & Audio ✓ Faults

- Est. 1995 - Reliable & Prompt Service
- Family Run Business
- Free Estimates & Expert Advice
- Work Carried Out With Care & Guaranteed

Over 75% Of Our Work Is Through Recommendations!!

01274 563794

www.simpsonselectrical.com



aaaaaa Simpsons Electrical