

Eldwick Newsletter

Village Society

Issue No. 492 November 2019

ANOTHER SUCCESSFUL BONFIRE

The weather on Saturday 2nd November did not bode well for a successful Bonfire Night, however we were pleasantly surprised how many people did turn up in the evening and many thanks to them.

The evening proved a great success with some saying that it was the best firework display ever. The bangers were cremated beautifully and, with Mr. Dan entertaining there was something for everybody.

The event takes a great deal of organising to make it as safe as possible and we are pleased to say that the Bradford Council Emergency Planning Team gave us a five out of five star rating for our planning!

Thanks are due to The Bingley Sea Scouts, Bingley Airedale Rotary and all

our sponsors especially Janus Interiors and Manningham Concrete. The event is run entirely by volunteers, most of whom are definitely showing their age! We will certainly be looking for younger volunteers next year.

This event is very expensive to put on with around three thousand pounds being spent on fireworks. Fortunately, due to the good turnout, we were able to make a profit. This means that from all the Village Society fundraising events this year i.e. Banger Burning at the Gala, Beer and Banger Festival etc we are now able to make a donation to The Yorkshire Air Ambulance of Six Thousand Pounds and there are also donations to other local charities.

THE ELDWICK CHURCH NEWS

There is lots to look forward to as Christmas approaches.

December 1st is the first Sunday in Advent. Our young people will be taking the 10.30am service which is all about dressing the Christmas Tree! Eldwick Primary School choir will be assisting and singing for us.

Early in December the knitted angels will be making a return, hidden around Eldwick Village. If you do find one of the angels, please take it home. It is a gift from the Eldwick Church to wish you and your family Merry Christmas!

Later in December there are a number of special events going on at Church.

Christmas by Candlelight is on Thursday 19th December at 7.00 pm: carols to listen to and to sing; festive readings; mince pies & mulled wine.

Messy Christingle is on Saturday 21st December at 3.30pm: make your own Christingle orange then join in with crafts & games, some songs and a story. Finish with a meal together.

Family Nativity is at 10.30 am on Sunday 22nd December with the option of coming dressed as your favourite character from the Christmas story.

The Crib Service on Christmas Eve involves mulled wine, juice, biscuits and mince pies as you arrive. Come at 4.15pm. Later that evening is Midnight Communion at 11.30 pm.

The (short) Christmas Day service begins at 10.00 am. Bring a present to open. This is followed by an optional Communion at 10.45am.

Eldwick Village Society AGM
Monday 16th December at 7pm
in Birches

COFFEE CAKE CHAT

takes place in the Church Link Cafe
every Tuesday & Thursday
10.00 am - 12.00 noon Tuesday
Fairtrade coffee & tea; scones & cakes
10.00 am - 1.00 pm Thursday
light lunches also served.

SPRINGFIELD SURGERY FLU CLINICS

Flu clinics are taking place during
October and November.
Please phone 01274 567991 or visit
our website for further details of
exact dates and times.

BIRCHES

Open from 12 noon onwards
Saturday & Sunday
6 - 11pm weekly.
Dogs and children welcome.
NOW SHOWING SKY SPORTS



Paul Rae C.A.R.P.E.T.S
Est. 1983

I'll bring sample to you!
Please call Paul on 07778 568845
Over 30 years experience & friendly advice

ELDWICK & GILSTEAD HORTICULTURAL SOCIETY

Firstly, it is with great sadness that I am the author of this piece. Our publicity officer and long time stalwart of the Society, Mike Hitchen passed away in October. My favourite memory is a discussion we had at the annual show where Mike always entered bread. I was encouraged enough to start baking my own again and think of him as I knead.

Our October meeting was a complete contrast when we heard Peter Walker of Wack's Wicked Carnivorous Plants speak. He entertained us with how he became hooked, started small and grew to his current location within Scampston Walled Garden at Helmsley. Quite a number of the audience admitted to not being into that sort of plant but Peter was so enthusiastic and personable that everyone enjoyed the evening. A few were converted and venus fly traps, Nepenthes and Sarracenia were taken home to catch flies in the greenhouse.

November is our AGM and faith supper before we break for Christmas. Our first meeting on Tuesday 21st January is Ben Preston, head gardener at York Gate, Adel.

Letters to the Editor

Sir,

I feel I must write in response to the letter published in the October issue from Gillian Anderson concerning the use of litter bins for the disposing of dog poo bags. I, too, was so concerned about the health hazard and unpleasantness when they were overflowing onto the pavements that I rang Bradford Council on two separate occasions and complained that the collections had been missed for at least a week. I was advised that the collections sequence and route had been changed and they were experiencing a few teething problems. An ad-hoc collection was promised, and was indeed done the next day. Collections appear to have settled down now, and the bins in Warren Lane are now collected every Tuesday.

Most of the litter bins in Eldwick are of the round variety, and actually have signs indicating that it is in order for securely tied bags of dog poo to be deposited in these bins, along with any other rubbish. Perhaps there is a need for more bins or more frequent collections. Maybe Bingley Town Council could kindly lobby Bradford Council to improve the number of bins and/or collection facilities, as we all pay a very handsome sum in the way of Council Tax every year, and perhaps sometimes feel that, as a district on the outskirts of Bradford, the services and benefits we enjoy are somewhat diminished by distance.

As a resident of Eldwick for some 33 years, I have enjoyed walking my dogs around the village for 26 of those years. Needless to say, in that time, there have been plenty of moans and groans concerning the amount of mess left on our

pavements by irresponsible dog owners. I am pleased to report that I very rarely come across such mess nowadays, it seems that the vast majority of dog owners are clearing up after their pets,

Well done to all those responsible dog owners, and keep on using the bins - that is what they are there for!!

Michael Brook, Timble Drive

Sir,

As we approach the Festive Season I have a suggestion for showing Goodwill to all people.

I live near the mini roundabout at the junction of Otley Road and Warren Lane. Perhaps drivers using the roundabout could do helpful things for me and other road users such as signalling before entering the roundabout or when leaving. As a wheelchair user, I find it demeaning, when I get this wrong and have to stop to thank a driver for not killing me.

I also ask drivers to recognise that the white spot along with the appropriate signs represents a roundabout of the same status as the one near the start of Frank Hoyle Way. It was not merely a madcap scheme to waste paint. Any reader who knows me will realise that I do not come from Eldwick but arrived in West Yorkshire for work nearly 35 years ago. The first scheme which I handled involved mini-roundabouts near Wakefield, so I have to assume that people have known about these things for over thirty years so they should know what they are even if a driver has only recently passed his/her test. The roundabouts for all its faults detracts from my weekly trip into the Village centre.

Seasons Greetings to all readers,

Godfrey Lomas

MRS. WINIFRED KITCHEN

We are sad to hear of the passing away of Mrs. Winifred Kitchen on November 3rd.

Mrs. Kitchen was well known in the village for the last sixty years, especially to those children who attended Eldwick First School during the seventies and eighties where she was a dinner lady.

Our sympathy goes to all her family.

The funeral is at 10.30 a.m. on Thursday 21st November at Nab Wood Crematorium.

COUNCIL NEWS

Ros Dawson, has resigned from her position as Chair of Bingley Town Council, She will however remain as a Town Councillor.

Following the October full Council meeting Helen Owen, Deputy Chair, elected to the roll of Chair and Richard Holmes elected as Deputy Chair, we wish them well in their respective roles.

The tenders for the development of the toilet block to offices came in over budget. We have therefore revised the layout and specification for the contractors to revise their tenders, to bring them more in line with our budget for the project.

In the New Year we will be placing an order with Bradford's approved Painting Contractor to Paint the Street Furniture in Bingley, changing the colour from Blue to Black which is the common colour for all street furniture within BDMC.

In the next few weeks, weather permitting, BDMC will be installing a Puffin Crossing outside the Library in Bingley. This will improve the safety for users crossing the road to access the car park and Aldi.

As previously mentioned the monthly Saturday Markets will continue throughout 2020 with the exception of January, your continued support for the market is appreciated.

Do not forget the Christmas Fayre **Saturday 30th November**. Christmas Light Switch to be switched on by Stuart McCall at 4.30pm. Please come along, join in and enjoy the festivities.

Dates for your diaries:-

26th November Full Council Meeting, Eldwick Church commencing at 6.30pm.

7th December Monthly Market, all welcome.

7th December Community Litter Pick, venue to be confirmed.

10th December Planning Committee Meeting Cardigan House, starts at 6.30pm.

11th December Finance and General Purposes Committee Cottingley Community Centre, starting at 6.30pm

17th December Full Council Meeting, Bingley Baptist Church, Clyde Street, Bingley commencing at 6.30 pm.

All meetings are open to the public.

If you need the support of your local councillors for Eldwick:- David Heseltine or Mark Truelove, we are only an e-mail or a phone call away.



Janus
INTERIORS

WINNER OF THE INDEPENDENT TRADER OF THE YEAR

KITCHENS, BATHROOMS
& BEDROOMS

For more information or to discuss
your project call:

01274 566100

Unit 1A Leonards Place, Leonard Street
Bingley, West Yorkshire BD16 1DP

www.janusinteriors.co.uk
info@janusinteriors.co.uk



JCH

Electrical Services Ltd

Professionally covering all aspects of
domestic Electrical & Security work
including CCTV

Over 31 years experience
City & Guilds trained

Tel: 01274 511433 (Eldwick)
Mobile: 07788 418050



Simpson's
Electrical
of Bingley

✓ Rewires ✓ Sockets ✓ Inspections
✓ Lighting ✓ Alarms ✓ Telephone
✓ Testing ✓ TV & Audio ✓ Faults

• Est. 1995 - Reliable & Prompt Service
• Family Run Business
• Free Estimates & Expert Advice
• Work Carried Out With Care & Guaranteed
**Over 75% Of Our Work Is
Through Recommendations!!**

01274 563794

www.simpsonselectrical.com

aaaaa Simpsons Electrical

Yorkshire Countrywomen's Association

It was our Yearly Bingo and Quiz on Tuesday 8th October. Everyone who attended enjoyed the evening.

The entertainment for our next meeting on 10th December will be a Men's Barber Shop Choir. Our final figure for our Macmillan Coffee Morning is £299.30. Thank you to all who came. Our Christmas Carol Service in York is on Friday December 6th.

New members are always welcome. Please telephone Bev on 01274-565077

THE THORNTON SINGERS, formerly Thornton Vocal Union, will be holding a Christmas Concert of seasonal music at the Eldwick Church, Otley Rd, Eldwick on Saturday 7th December 2019 starting at 7pm. Tickets are £7, and include light refreshments. Tickets can be obtained from the Eldwick Post Office; Choir members; by calling Carole on 01274 560539; from The Stationery Cupboard on Chapel Lane Bingley, at Eldwick Church Tuesday Cafe or on the door on the night. Any proceeds from the concert will go to The Thornton Singers and The Eldwick Golden Oldies group.

SUNDAY 8th DECEMBER 2019

Come along and create your own luxury Christmas wreath to adorn your front door this Christmas. Full of gorgeous seasonal foliage and decorated with cones, berries, dried fruits and ribbon.

All materials and refreshments are included. Cost £45.00.

9.30am - 12.30pm OR 1.30 - 4.30pm

A deposit of £10 secures your place. To book please call into Eldwick Post Office or telephone 01274 563750.

The Christmas wreath making is being held in The Memorial Hall



We deliver fresh, gift-wrapped flowers locally, 7 days a week with prices starting at £25.00+ delivery.

Beautiful Wedding Flowers
Funeral & Sympathy Flowers

Special Occasions Gift Wrapped Plants

Tel: 01274 563750



Flowers by Eldwick Post Office

PETER MARRIOTT PROPERTY SERVICES

Professional Interior Painting & Decorating.

Please call to discuss your requirements.

Free estimates & advice.

No job too small

A friendly, reliable and professional service

07985 050543
01274 510969

✠ THE ELDWICK CHURCH ✠

SERVICES AND ACTIVITIES AT THE ELDWICK CHURCH

CHURCH SERVICES

17 November

09.15am Holy Communion
led by Rev Barbara Fairburn
10.30am Morning Worship led by
Mrs Philippa Normanton

24 November

10.30 am Holy Communion led by
Rev Barbara Walls

1 December

09.15 am Holy Communion led by
a Methodist Minister
10.30 am Family Worship & Christmas Tree
dressing led by the young people of our Church.

8 December

10.30 am Family Communion led by
Rev Peter Mayo-Smith

15 December

09.15 am Holy Communion led by
Rev Peter Mayo-Smith
10.30 am Morning Worship led by
a Methodist Local Preacher

Thursday 19 December

7.00 pm Christmas by Candlelight with music
& humourous, thoughtful and traditional
readings. Mulled wine & mince pies.

MESSY CHURCH

Messy Church is a different & informal way
of being church for all ages. It is held on the
3rd Saturday of the month from 3.30 pm
until 5.30 pm. Next dates 16th November &
21st December, when we will be celebrating
Messy Christingle.

PAUSE TO PRAY

A quiet 'drop in' time for reflection and
prayer.

Wednesdays 2.00 – 3.00 pm on 20th
November and 4th & 18th December in
Church

The Eldwick Church Fellowship meets on
21st November for a talk by Mike the Baker
at 7.30 pm and on the 12th December at 7.00
pm for a Christmas Party. All very welcome.

Five Rise Locks Hotel & Bistro

Come and sample our new Bistro Menu
Available from 6:30pm - 8:30pm
Family Events.

Available for Weddings, Parties, Funerals,
Family Gatherings and More.

Let our Family look after your family.

Christmas Menus now available

Telephone 01274 565296

Five Rise Locks Hotel, Beck Lane
Bingley BD16



Indian & Kashmiri Cuisine
Open 7 days from 5pm - 11pm
Early booking essential

Clarke House, Keighley Road
Bingley BD16 2RD
Telephone 01274 563 777
www.shamabingley.co.uk
Email: info@shamabingley.co.uk

OTHER REGULAR WEEKLY EVENTS

The Link Café is open on **Tuesdays** 10.00
am - 12.00 noon & **Thursdays** 10.00 am –
1.30 pm, with light lunches served on
Thursdays from 11.30 am

Wednesdays 10.00 am -12.00 noon
Embroiderers Guild, Airedale Branch.

4th Wednesday 10.30 am Probus (a group
of friendly retired **Professional
Businesswomen**, who meet for coffee, chat
and then a speaker. New members and
visitors welcome. Details of speakers at
<http://eldwickchurch.org.uk/activities/probus/>

Wednesdays weekly 1.30 pm - 3.30 pm,
Craft Group meet. Folks either bring their
own knitting / sewing /craft to enjoy or we
sometimes work together on crafts for
Church displays or for charity.
Refreshments. Just drop in.

The Villages Pre-School: 9.00 am - 3.00 pm
Monday – Friday & Stay & Play Mondays
9.30am - 11.00 am.

Contact: villagespreschool@gmail.com

OTHER REGULAR MONTHLY EVENTS

Last Tuesday in the month, 2.00 pm – 4.00
pm Goldies (Golden Oldies). For older
people, Goldies features sing-along songs
from the 50's & 60's, followed by afternoon
tea. Dementia friendly, free to all residents
of Bingley, transport available. For more
info or to book a place 01274 560539

1st Friday in the month Friday Footsteps,
our walking group. Details from
<http://eldwickchurch.org.uk/activities/friday-footsteps/>

CHURCH HALL BOOKINGS:-

Contact our Premises Manager,
Julie Smith on 07591 430501

Tec2k

Computer Problems Resolved Local to Eldwick

Repairs and upgrades to Laptop & desktop
computers

Resolve problems with broadband or WiFi

Home appointments no problem

Anything to do with electronics
please call for advice

Tel Stuart on 07958-994951

Visit our Web Site for full details
www.Tec2k.co.uk

Andrew Tracey Plumbing and Heating Services (Eldwick)

- Central Heating Systems
- Boiler Exchanges
- Bathroom Installations
- Tiling
- General Plumbing



211677



Tel: 01274 967710/07799536605

A STORY FROM THE CHAIR

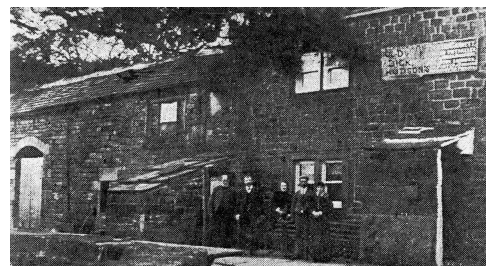
This is not a message from the Chair of an organisation but one from a chair itself, one which would have a great deal to tell from its own memories – if only? The content of such articles as this has often emanated from contact with the editor of the Newsletter from an online reader. Hence, in the past, Tracey Preston Cook in South Africa, a distant relative of the originator of The Glen pub – Ben Preston, added information. The first ever good pictures of Warren House Farm materialised with information of occupants in the 19th century.



So, what of the chair as pictured? Rob Gill of Cheltenham made an enquiry relating to his family history. His father had been born in Stanley Street, Bingley, but earlier generations of various Andersons, Rob's ancestors, were Eldwick farmers. High Eldwick, the original linear settlement that preceded Eldwick Beck Bottom village, included many farms, accessed by the High Road packhorse and cart track. One of those was High Gate Farm which was situated at the junction of the late 18th century 'road' leading up from Eldwick Hall to the High Road. The road had been sanctioned by the Crompton Stansfield family of Esholt Hall, whose land was crossed. At the time High Gate Farm was tenanted by John Anderson and, possibly with

the new junction site, it was decided in 1787 to transfer the licence from the adjacent old Rattlebank Hall, to High Gate. Thus John, and his son Tommy, until the arrival of the first of the Hudson family – Thomas in 1809, were the landlords of what became known as The Fleece Inn, later Dick Hudson's. Rob had often wondered about the provenance of the pair of beautifully crafted yew fireside chairs which, according to a few generations of his family, had been 'fixtures' in John's pub. It was Rob's father who told him that his mother Hilda, who in turn was the daughter of Annie Anderson, who claimed the chairs were 'from a pub we used to own'. Obviously Rob's research has been successful but the contact with the Newsletter produced yet more information for him.

The aforementioned Crompton Stansfields, like the Ferrands and George Lane Fox, all held extensive lands around Bingley, leasing farms and quarries. All such landowners employed agents to collect rents and ensure properties were well-maintained and well managed. Thomas Crompton had 'a great book' in which all details of all his income, tenancies, rents and payments, as well as investments, were recorded. As subsidiaries, more local records were kept and, for HELWICK, a hand bound, handwritten record exists, dating from 1776. The first pages are the index, showing names in alphabetical order and page references. Thus, first in the list are the Andersons. John Anderson's farm had One Messuage, One Barn, One Stable and One Garden. The land was made up of Six Closes, all individually named, e.g. The Well Close, Great Intack. All this was at a yearly rent of Thirteen Guineas to be paid half yearly at Whitsuntide and Martinmas. John had to



Old Dick Hudson's, formerly Highgate Farm, as it was in the last century.

undertake labour for which he was paid by Samuel Crompton, also yearly. At Whitsuntide in 1779 the book includes 'paid to John Anderson Two Guineas for One Years Sallary for taking care of the Road which goes through Helwick which belongs to Samuel Crompton to mend. By 1782 the payment refers to the late Samuel Crompton, deceased and on 4th July 1810 rent paid for this 'and his other farm' is the last, as the last line on the page records 'John Anderson is dead'. The opposite page then declares, 'These farms now let to Thomas Anderson for a half yearly rental of £29.16.6. in 1812. In 1815 payments were being made by the Widow Mary Anderson in January but by July, made by the Trustees of the late widow. Other family members continued farming at Cropper Fold in Glovershaw Lane and Low House next to Eldwick Hall. The earlier reference to two farms has been interpreted as High Gate and Cragg Side which was further along the road past the 1815 Chapel. The agent acting for the landholder was John Lobley. He is personified on some maps with Lobley Gate which is a landmark where Glovershaw Lane meets the road to Shipley Glen. The Helwick book has two pages listing what John was due for having paid the likes of Anderson for making roods of Road, drains, loading lime, stone, slate and wood, as well as walling. For the two year period from 1776 to 1778 John was repaid £171/15/4d.

During the next century from 1815, the Andersons continued farming in Eldwick until more transactions from the Crompton Stansfields took place. There were valuations of their Eldwick estate in 1929 which showed the true extent. Included were the Eldwick Hall and farm, two other farms of the Andersons, the Eldwick Corn Mill and its ten cottages of New Row, land at Dowley Gap including houses near the canal – all valued at £12,918 by non-other than Mr Charles W.Dacre. In 1930 a conveyance between Mary Evelyn Maud Crompton Stansfield, then of Ringwood in Hampshire, and the Shipley UDC for £3000 to establish water catchment and supply, included Crag Farm of Denby Anderson, Also included was J.Tetley & Sons Ltd of The Fleece Inn – still part of the estate. Lots more correspondence came in the 1920's as Shipley UDC wanted to buy more land at The Riggs and the farms of Denby and Frances Anderson.

To be continued.

BINGLEY ARTS CENTRE – Dates for your diary

- 30 Nov - Bingley Chamber of Trade - Christmas Fair & Bingley Lights Switch-on from 10:00am
- 30 Nov - Ceilidh - dancing to Northern Comfort Band with a Pie & Pea Supper at 7:30pm
- 3 Dec - Community Cinema showing "Still Alice" at 2:30pm
- 4 Dec - Salfaire Arts Society monthly lecture – "Merrily on High" at 2pm
- 7 & 8 Dec - Bingley Little Theatre presents "Under Milk Wood" in the Studio at 7:30pm
- 9 - 14 Dec - Bingley Little Theatre presents "Absurd Person Singular" a dark Christmas comedy
- 18 Dec - Community Cinema showing "Evita" at 2:30pm & 7:30pm
- 21 Dec - Badapple Theatre presents "The Snow Dancer" at 2pm & 6pm
- 22 Dec - "Starmakers" a Christmas concert by the All Together Now Choir at 3pm & 7:30pm

BINGLEY JANUS

A CLUB FOR RETIRED MEN IN BINGLEY AND SURROUNDING AREAS,
MEETING AT ELDWICK MEMORIAL HALL ON THURSDAYS FROM 10a.m. to 12p.m.
NEW MEMBERS ALWAYS WELCOME

President : Phil Barraclough Secretary : Graham Anderson tel. 01274 563843

- Oct. 31st. Geoff Roberts : The History and Future of The River Aire
- Nov. 7th. Graham Anderson : A Criminal Past
- Nov. 14th. Geoff Twenytman : The Historical Society
- Nov. 21st. David Davies : The Austerity Years 1945-1951
- Nov. 28th. Tish Lawson : The History of Theatre and Panto in Bradford
- Dec. 5th. Paul Kenny : On Location One ... T.V. and Film
- Dec. 12th. Neil Ramshaw : Great lesser-known Sporting Heroes

INTERIOR PAINTING AND DECORATING



Also

PICTURE FRAMING

by *Chris Bettles*

21 Mansfield Avenue, Eldwick

Tel: 01274 510252
Mob: 07941 364274



BOND GARDEN SERVICES

SIMON BOND

ELDWICK
BINGLEY

01274 567439
07790 415593

janbond1956@gmail.com

HEDGES TRIMMED

MOWING & TURFING

TREES FELLED/PRUNED

FENCING/PLANTING

WILKINSON & WHITLEY LTD.

ALL MODEL SERVICING

MOT TESTING

TYRES

BATTERIES

BRAKES

WELDING

EXHAUSTS

ALL MAKES

AIR CON. REPAIRS

SERVICE LIGHT RESET



LIME STREET, BINGLEY

01274 562787