

# Eldwick Newsletter

Village Society

Issue No. 483 February 2019

## CROWDFUNDING FOR LIGHTS AT ELDWICK SCOUT AND GUIDE HUT

Eldwick Scout and Guide Hut is moving into the 21st century and installing LED lights and upgrading the Fuse Box.

The Hut has been used by thousands of children as Brownies, Guides, Cubs and Scouts over the last 60+ years and continues to provide a regular meeting place for over 100 children each week thanks to the dedication and enthusiasm of the group leaders both past and present.

With an anticipated cost of just over £800 this will stretch the Hut's finances. We are appealing to the community to help with the costs. A donation however large or small will help us reach our target.

Please follow the link and support the cause -

<https://www.gofundme.com/eldwick-scout-and-guide-lights>.

Thank you in anticipation of your support.

If you are not online Nigel at Eldwick Post Office will be pleased to receive envelopes on our behalf (Chqs payable to Eldwick Scout & Guide Hut)

Thank you for supporting the future of the youth of Eldwick.

## ELDWICK GIN FESTIVAL

"Apparently Gin & Tonic has 91 Calories. A banana has 105. Enough said".

Planning for the 2019 Eldwick Gin Festival is well underway and this year local Gin enthusiasts can look forward to more varieties of Gin, more live entertainment and more tasty food to choose from.

The dates for this year's Festival are Friday 12th & Saturday 13th July (6.30pm - 11pm). The event will once again be held at The Eldwick Memorial Hall with the excellent support of the Birches Free House & the Eldwick Village Society.

We're also delighted to have the backing from Bingley based Mortgage Advice Bureau. Andrew, Tim and the team have kindly offered to be this year's main event and Gin glass sponsor.

Tickets are still available, although we suggest being quick, as they're in popular demand. You can purchase your tickets from Eldwick Post Office, at a cost of £10 each. This includes your entry to the event, your souvenir Gin glass and your first Gin and Tonic.

If you're struggling to get to the Post Office, don't worry, we'd be happy to deliver tickets locally so by all means just get in touch with us via the Eldwick Gin Festival Facebook page.

We're looking forward to seeing as many of you as possible at this year's event, and we're ready for this year's challenge of topping a hugely popular debut to beGIN. Tom, Craig, Danny, David

## ELDWICK GALA

### Gala Queen Selection Disco

Friday 22nd March 7.00-8.30pm

Eldwick Memorial Hall

for 7-11 year olds

Entry £2

It is the time of year when the 2019 Gala Queen and attendants will be selected by selecting names from a hat.

If you would like put your name forward please complete the form below and deliver it to Eldwick Post Office by 21st March

## ELDWICK AND GILSTEAD GALA DAY

Saturday 29th June 2019

### Gala Queen or Attendant Entry

I would like to be considered for Gala Queen / Attendant for the 2019 Gala. The Gala Queen will be chosen at the 'Gala Queen Selection Night Disco' on Friday 22nd March, 7pm till 8.30pm in Eldwick Memorial Hall (Disco entry £2). The Gala Queen should be in year 6 or over and attending the selection evening and the attendants between the ages of 7 and 10 (girls or boys). The Gala Queen's name and all Attendants' names will be drawn out of a hat by the 2018 Gala Queen.

Name \_\_\_\_\_ Tel No. \_\_\_\_\_

Address \_\_\_\_\_

School \_\_\_\_\_ Age \_\_\_\_\_

I agree to my child's picture appearing in the Eldwick Newsletter and local press I do live in Eldwick or Gilstead.

Signed \_\_\_\_\_ parent

Please return this slip to Eldwick Post Office before 21st March.

If you would like to enter via google forms you find a link on our Facebook page 'Eldwick & Gilstead Gala' events.

## The Eldwick Church News

Our builders are making good progress on our link building. They have knocked out the north wall of Church, inserted supports for the Church roof (and for the roof of the link), laid foundations and are now onto bricklaying. This year Shrove Tuesday falls on 5th March. You are invited to join us that morning for

Pancake Church Café! We'll be serving pancakes with an assortment of sweet fillings and sending the proceeds to the charity Christians Against Poverty (CAP).

CAP is a local charity which started in 1996 with its founder John Kirkby helping people in Bradford estates out of debt. Through partnerships with local churches, CAP now runs a nationwide network of debt

centres, job clubs & life skills groups.

The end of March is Mothering Sunday. Join us on Sunday 31st for Family Worship.

Keep up with everything we're doing.

Find us on Facebook @TheEldwickChurch & Twitter @EldwickChurch or look on our website <http://eldwickchurch.org.uk/welcome>

Paul Rae C.A.R.P.E.T.S

Est. 1983

*I'll bring sample to you!*

*Please call Paul on 07778 568845*

*Over 30 years experience & friendly advice*

## BIRCHES

Open from 12 noon onwards  
Saturday & Sunday

6 - 11pm weekly.

Dogs and children welcome.

NOW SHOWING SKY SPORTS

# ELDWICK & GILSTEAD HORTICULTURAL SOCIETY

## GARDENING FOR THE GREATS

It is always challenging for the person charged with finding speakers for any organisation. A group meeting with a specific topic ie "Horticulture" brings in the added equation of not repeating oneself but most importantly being different. Sally Robinson, our new 'speaker finder' certainly provided that quality at the first meeting of the New Year.

Kevin Pratt from Cheshire, a very eminent gardener with a wealth of knowledge and experience, brought with him the added dimension of having very different experiences of gardening that to many of us were to be somewhat 'gobsmacking.' Kevin's thirty-five years of gardening life began at Kew. After qualifying, his early career followed a fairly traditional path of being part of a team tending gardens over parts of the North and at a young age achieving the role of Head Gardener to a local G.P.

Such was his success there that he was soon head-hunted to serve more eminent surgeon and consultant friends. Then it seems circumstances took him down a very different path when he became a pivotal part of the life of the famous and often newly-rich employers in Cheshire. We viewed pictures of sumptuous houses with appropriate proportions of gardens that many of us see in the media and on screen.

He then took us into the world of the owners of the properties – many of them international football players whose names could not be divulged - and presented us with the expectations they had of these areas of a green and pleasant land! It was not unusual for a house costing multi-millions to be demolished and replaced with something more fashionable and Kevin being tasked with similar garden schemes.



Gardener to the Manchester Soccer stars, Kevin Pratt and wife Suzanne.

Often a thousand pounds or more would be handed over for some whim only for it to be discarded when the owner changed his or her mind. ("These flowers are not the orange I wanted!"). But it also gave him huge scope to bring into life his own designs which gave him recognition in the broader horticultural field and yet more commissions.

Yet it seems the expectations of Kevin's employers wore him down in the end. He struggled with his own feelings about wild life and waste. Fortunately a further commission enabled him to create a more lasting impression. Hired by Raymond Blanc at his riverside home and restaurant Le Manoir aux Quat' Saisons in Oxfordshire for a year, to redesign some of the garden there. He planted 3,000 fritillaries and white borders to his immense satisfaction.

During these periods of his life he became an authority on Wisteria and many unusual plant varieties. This then formed his latest and perhaps more rewarding place in horticulture. He now owns and runs a specialist plants nursery in Cheshire. An invitation to visit him was widely extended to members who received his presentation with much enthusiasm.

Don't miss our 19th March meeting when Andrew Willocks will tell us all about The Last 10 Years at Harlow Carr. Should be another good 'un.

**Norma Bartle**

## POTHoles IN THE MEMORIAL HALL CAR PARK

Dear Sirs,  
Why are there large potholes in the Memorial Hall car park which are being ignored?

Surely this is something which the Village Society could rectify for the benefit of the whole village?

This would of course be with the help and co-operation of the Memorial Hall and the Birches regardless of who actually owns the car park.

Thanking you in anticipation.  
John Muggleston

*The potholes are actually on BMDC land., they have been advised. Ed.*

# COUNCIL NEWS

Following our January Full Council Meeting the Chair of the Neighbourhood Plan Working Group gave a progress report. It is proposed to hold several consultation meetings at venues around Bingley to inform the community of the work completed to date, get feedback, comments and residents views on the contents of the document produced thus far. The planned meeting for Eldwick is scheduled to be held in the Memorial Hall on the 1st April.

Discussions around the Budget for the next financial year 2019/20 were debated and in this year's figures we have had to include a sum for the up and coming elections. Bradford normally covers the costs, but with the cutbacks, we have to share some of the financial burden. We have been very mindful, when reviewing the budget for the next financial year, that we keep costs to a minimum but at the same time keeping Bingley and surrounding areas well maintained. The Precept for the year 2019/20 is set at £20.00p. This figure will be included on the next Council Tax Bill sent to you from Bradford Metropolitan Council.

The Annual Town Meeting to take place on Thursday 7th March at Cottingley Community Centre commencing at 6.30pm. Recipients of grants will be invited to attend as Stall Holders to publicise their Groups & Park Run, Trinity and All Saints Community Kitchen and Bingley Arts Centre Community Cinema will be invited to speak. Lidl along with the MP, Ward Councillors and The Chamber of Trade will be invited to attend as guests.

Comments have been received from CBMC and Wellers Headley, the town council solicitors on the draft Heads of Terms relating to the CAT (Community Asset Transfer) of the toilet block in Bingley. There are one or two points to address; these will not be too difficult to overcome and we should be in a position to sign the agreement in the near future. A very positive meeting was held with our Project Managers Bowman Riley for the development of the toilet block and an action plan was agreed for the way forward. Work will go on in the background to prepare the necessary documentation for tendering the works to building contractors.

Following on from last month's newsletter, don't forget if you are interested in being elected as a local councillor representing Eldwick on Bingley Town Council please get in touch.

Mark.truelove@bingleytowncouncil.gov.uk or telephone 07809690398. Your Village Needs You.

Thanks, **Chris & Mark**



We deliver fresh, gift-wrapped flowers locally,  
7 days a week with prices starting at  
£25.00+ delivery.

Beautiful Wedding Flowers  
Funeral & Sympathy Flowers

Special Occasions Gift Wrapped Plants

**Tel: 01274 563750**



Flowers by Eldwick Post Office



**Janus**  
INTERIORS

WINNER OF THE INDEPENDENT TRADER OF THE YEAR

KITCHENS, BATHROOMS  
& BEDROOMS

For more information or to discuss  
your project call:

**01274 566100**

Unit 1A Leonards Place, Leonard Street  
Bingley, West Yorkshire BD16 1DP

www.janusinteriors.co.uk  
info@janusinteriors.co.uk



**JCH**  
**Electrical Services Ltd**

Professionally covering all aspects of  
domestic Electrical & Security work  
including CCTV

Over 31 years experience  
City & Guilds trained

**Tel: 01274 511433 (Eldwick)**  
**Mobile: 07788 418050**



**Simpson's**  
**Electrical**  
**of Bingley**

✓ Rewires ✓ Sockets ✓ Inspections  
✓ Lighting ✓ Alarms ✓ Telephone  
✓ Testing ✓ TV & Audio ✓ Faults

• Est. 1995 - Reliable & Prompt Service  
• Family Run Business  
• Free Estimates & Expert Advice  
• Work Carried Out With Care & Guaranteed

**Over 75% Of Our Work Is  
Through Recommendations!!**



**01274 563794**

www.simpsonselectrical.com

aaaaa Simpson's Electrical



## Yorkshire Countrywomen's Association

It was our Annual Beetle Drive on January 8th 2019. It was attended by about 24 people who all had an enjoyable time. Our next meeting which will be on March 12th is our Annual Spring Party. Entertainment is by the Baildon Methodist Church Ladies Choir. Our 9th April meeting speaker will be John Clay who will be giving a talk on the History of Black Dyke Mills Band.

Please come along if you can as new members are always welcome.

Please contact Bev on 01274 565077

## ✠ THE ELDWICK CHURCH ✠

### SERVICES AND ACTIVITIES AT THE ELDWICK CHURCH

#### CHURCH SERVICES:

##### 24 February

10.30 am Holy Communion led by Rev Ruth Crompton

##### 3 March

09.15am Holy Communion led by a Methodist Minister

10.30 am Family Worship led by Rev Peter Mayo-Smith

##### Ash Wednesday 6 March

07.00 pm Holy Communion led by Rev Peter Mayo-Smith

##### 10 March

10.30 am Holy Communion led by Rev Peter Mayo-Smith

##### 17 March

09.15 am Holy Communion led by Rev Peter Mayo-Smith

10.30am Morning Worship led by a Methodist Local Preacher

##### 24 March

10.30am Holy Communion led by a Methodist Minister

##### 31 March Mothering Sunday

10.30am Family Worship led by Rev Peter Mayo-Smith

#### MESSY CHURCH

Messy Church is a different way of being church for all ages. It is currently held in the church hall once a month on a Saturday, with lots of craft activities as you arrive; stories from the Bible; games, songs and prayers. It finishes with a simple meal. This is an event for everyone – whatever your age, why not come and try it!

**Saturday from 4.00 - 5.45 pm on 16th March**

#### PAUSE TO PRAY

A quiet 'drop in' time for reflection and prayer. **Wednesdays 2.00 – 3.00 pm**  
**20th February & 6th & 20th March at Winston Grange (next to Church)**

#### THE ELDWICK CHURCH FELLOWSHIP

Meets in the Church Hall at 7.30 pm on **21 Feb** for a talk by Jeanette Wallace entitled "A vast area of nothingness" and **21 March** for a talk by Akram Cheema-Khan entitled "The Global Village School". Non-members welcome, small admission charge.

#### OTHER REGULAR WEEKLY EVENTS

**Tuesdays & Thursdays** 09.30 am - 12.00 noon Church Café in the Hall. On Thursdays, Café also serves light lunches from 11.30 - 1.00 pm

**1st & 3rd Wednesdays** 10.00 am - 12.00 noon Embroiderers Guild, Airedale Branch.

**4th Wednesday** 10.30 am Probus (a group of friendly retired Professional Businesswomen, who meet for coffee, chat and then a speaker. New members and visitors welcome. Details of speakers at <http://eldwickchurch.org.uk/activities/probus/>

**Wednesdays weekly** 1.30 pm - 3.30 pm, Craft Group meet. Folks either bring their own knitting / sewing /craft to enjoy or we sometimes work together on crafts for Church displays or for charity. Refreshments. Just drop in.

**Pre School Group** – 9.00 am - 3.00 pm Monday - Friday.

Contact: [villagespreschool@gmail.com](mailto:villagespreschool@gmail.com)

#### OTHER REGULAR MONTHLY EVENTS

**1st Friday** in the month Friday Footsteps, our walking group. Details from <http://eldwickchurch.org.uk/activities/friday-footsteps/>

#### CHURCH HALL BOOKINGS:-

Contact Julie Smith on 07396 390650

Eldwick & Gilstead Horticultural Society  
Registered Charity No. 513988



## Some Good Garden Plants

Recommended by

*Pat Inman*

**Tuesday 19th February**  
**7.30pm in the Memorial Hall**

Admission for members is £1.50,  
for non-members £3 including tea or coffee,  
biscuits and raffle ticket.

### Private Tuition

(Qualified Primary School Teacher)

Help your child reach their full potential in a positive and encouraging environment.

From pre-school onwards

- Getting ready for primary school
- Ongoing support in numeracy, literacy & science
- GCSE Maths
- School entrance exams

**First session free**

**Cathy Levis**

**01274 568602 (Gilstead)**

### Childminding Vacancies Available

**Telephone Cathy Levis on**

**01274 568602 / 07585 449275**

Most recent Ofsted inspection "This provision is strong ... children enjoy their time with the childminder ... children are well cared for in a warm welcoming environment ... the childminder is highly skilled".

## Five Rise Locks Hotel & Bistro

Come and sample our new Bistro Menu

Available from 6:30pm - 8:30pm

Family Events.

Available for Weddings, Parties, Funerals, Family Gatherings and More.

Let our Family look after your family.

Christmas Menus now available

**Telephone 01274 565296**

**Five Rise Locks Hotel, Beck Lane**

**Bingley BD16**

## Tec2k

### Computer Problems Resolved Local to Eldwick

Repairs and upgrades to Laptop & desktop computers

Resolve problems with broadband or WiFi

Home appointments no problem

Anything to do with electronics please call for advice

**Tel Stuart on 07958-994951**

**Visit our Web Site for full details**  
**[www.Tec2k.co.uk](http://www.Tec2k.co.uk)**

## WILKINSON & WHITLEY LTD.

**ALL MODEL SERVICING**

**MOT TESTING**

**TYRES**

**BATTERIES**

**BRAKES**

**WELDING**

**EXHAUSTS**

**ALL MAKES**

**AIR CON. REPAIRS**

**SERVICE LIGHT RESET**

**LIME STREET, BINGLEY**

**01274 562787**



Indian & Kashmiri Cuisine

Open 7 days from 5pm - 11pm

Early booking essential

Clarke House, Keighley Road

Bingley BD16 2RD

Telephone 01274 563 777

[www.shamabingley.co.uk](http://www.shamabingley.co.uk)

Email: [info@shamabingley.co.uk](mailto:info@shamabingley.co.uk)

## Andrew Tracey Plumbing and Heating Services (Eldwick)

- Central Heating Systems
- Boiler Exchanges
- Bathroom Installations
- Tiling
- General Plumbing



211677



**Tel: 01274 967710/07799536605**

# POETIC LICENCE

## AN AUTUMN'S STROLL TO ELDWICK WHERE THE LATE JOHN NICHOLSON, THE AIREDALE POET, SPENT THE FIRST YEARS OF HIS LIFE.

Another summer just had passed.  
And autumn's leaves were falling fast,  
Yet ling'ered summer weather;  
When a few friends – a chosen few –  
Started with me again to view  
My native hills of heather.

With cheerful heats we took the rail,  
And laughed at many merry tale,  
As down the line we bounded;  
Then stood upon the banks of Aire,  
'Midst scenes for ever fresh and fair,  
By rocks and hills surrounded.

Awhile we gazed upon the flood,  
Then mounted up the shaggy wood,  
Whilst autumn leaves fell o'er us;  
And when we reached its rocky crest,  
We sat us down awhile to rest –  
The landscape spread before us.

What various colours met our gaze,  
Whilst a soft azure-tinted haze  
O'er slumbering woods was creeping;  
And, down below, a murmuring stream  
Sung like an angel in a dream,  
Which seemed to lull their sleeping.

October's sun was sinking low,  
And bathed the woodlands in a glow  
Of a rich roseate hue;  
Over this scene we lingered long,  
Till our full hearts burst out in song:  
Well pleased, we then withdrew.

To other scenes more stern and wild,  
Where Airedale's true poetic child  
First tuned his rustic lyre,  
Which echoes yet o'er vale and hill,  
Although the poet's heart is still,  
And quenched his muse's fire.

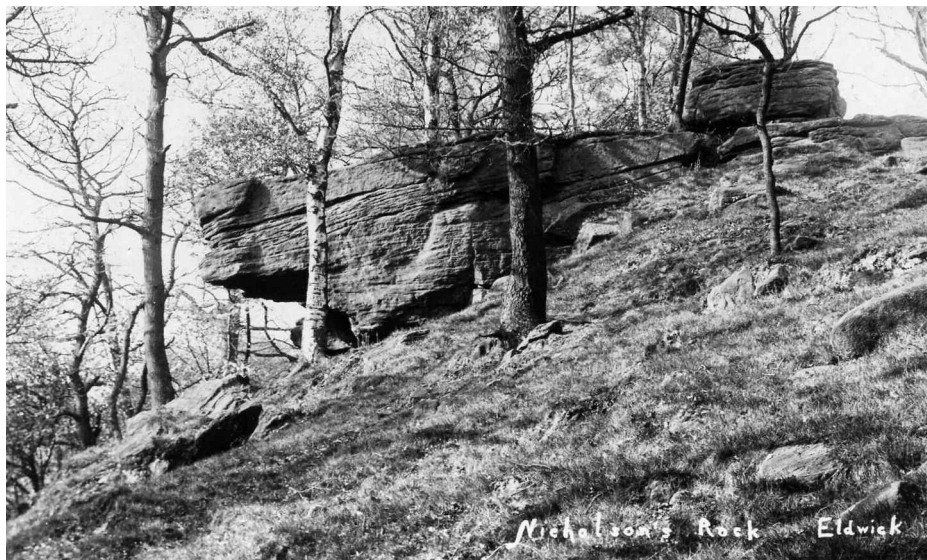
We found the dell where stands the  
stone,  
Where oft the poet sat alone,  
And mused and wrote for hours.  
'Twas here he spent his happiest days;  
'Twas here he wrote his sweetest lays,  
To rocks, and trees, and flowers.

The evening shades were coming slow,  
Which warned us of the time to go  
At once we made a sally,  
Down to where Bingley nestling stood,  
Beneath the shelter of its wood,  
In Airedale's peaceful valley.

We met a welcome, frank and free,  
And soon we had a splendid tea –  
No viands could be nicer;  
In vain, through Yorkshire you may look  
For kinder host, or better cook,  
Than George and Mrs. Slicer.\*

Bradford, October 28th, 1861  
T. Nicholson

\*Of the Queen's Head, Bingley



Changing facts or rules to make this article more interesting relates, to both the title and the author of the poem. Obviously autumn is long gone and was it really Thomas Nicholson, not his brother John – the Airedale Poet, who was the author? It was of course John's visits to too many licensed premises – beer houses in 1843 that caused his demise. Walking from Saltaire en route to an aunt in Eldwick where had worked in the mill, he chose to cross the stepping stones on the Aire, fell off and was drowned. He had become so famous that there were 1000 at his funeral, including the then Lord Harewood, Lord Ribblesdale and even Sir Titus Salt, Bart and it was the gentry who paid for his tomb. It was brother Thomas who, in 1870 presented the Nicholson Plinth in the Prince of Wales Park surmounted by the bust of his brother. The other relic of John is the rock on which he is said to have carved his name in between writing his poems. It is situated in Intake Wood at the head of Eldwick Beck between the two reservoirs. It was a popular location for walks on holidays and feast days in both the 19th and 20th centuries but now it is on private land owned by a certain Mr. Harvey Smith. The Eldwick School Log Books record visits by the pupils in summer time.

Thomas Nicholson was a distant relation to the late Richard Whitely the TV Personality who went to a prep school in Park Road Bingley. Thomas was a wool comber initially with very little education and married Hannah in 1832 when they went to live in Bowling. By 1861 they were in Kirkgate in Bradford running an 'eating house' and in 1871 were in Undercliffe Cottages in Pollard Lane so had moved up in the world at the time Thomas had presented the bust. Three years before his death in 1884 Thomas was listed as a 'retired eating house keeper' living in Kensington Street, now Girlington but then Manningham.

A final twist in the tale is that a certain T. Nicholson conducted the Bradford Volunteer Band in the Prince of Wales Park in June 1883. Music in the park was popular with 3000 people in attendance in one season and even the Black Dyke Mills Band performed. A wooden bandstand was built in 1894, costing £9/5/6d despite the fact that the ancient Bingley Market Hall had been brought to the park in 1888 from Main Street opposite the former Queens pub. The bandstand was temporary and the Hall was used later instead. So who was the real Thomas, poet, restaurateur or musician?

### COFFEE CAKE CHAT

in the Church Hall  
Every Tuesday and Thursday  
9.30 am – 12 noon  
Fresh Fairtrade coffee & tea, home made cakes  
and from January light lunches  
Thursdays 11.30am - 1.00pm

### INTERIOR PAINTING AND DECORATING



Also

### PICTURE FRAMING

by *Chris Bettles*

21 Mansfield Avenue, Eldwick

Tel: 01274 510252  
Mob: 07941 364274



### BOND GARDEN SERVICES

#### SIMON BOND

ELDWICK  
BINGLEY

01274 567439  
07790 415593  
[janbond1956@gmail.com](mailto:janbond1956@gmail.com)

HEDGES TRIMMED  
MOWING & TURFING  
TREES FELLED/PRUNED  
FENCING/PLANTING

### PETER MARRIOTT PROPERTY SERVICES

Professional Painting & Decorating.  
Other types of work also undertaken.  
Please call to discuss your requirements.

Free estimates & advice.  
No job too small

A friendly, reliable and professional service

**07985 050543**  
**01274 510969**