

Eldwick Newsletter

Village Society

Issue No. 477 August 2018

MY BORNEO EXPEDITION



Thank you to the Eldwick village society for their generous donation towards my 3-week expedition to Borneo. To get this opportunity I had to write a statement along with 64 other students explaining why one should be the best candidate. Myself and 14 others were selected to have this once in a lifetime opportunity to learn valuable life lessons and to enrich our knowledge of foreign cultures.

As soon as I was selected I had to think of ways to fundraise the money for the trip as the fundraising is as valuable and rewarding as the expedition itself. I bought a popcorn machine and went to local galas and events as well as selling sweet bouquets on celebrations such as Christmas and mothers day.

After the 13½ hour flight from London to Singapore, then the 2 hour flight from Singapore to Kota Kinabalu we explored the city and received our budget we had to live on for the 3 weeks. After that we travelled to the Kulu river where we went white water rafting and ended the day with a barbeque. Secondly we visited the orangutan sanctuary followed by the sun bear sanctuary in Sepilok. This was amazing as these are endangered species and very few people get the opportunity to see one.

After this we had a 5 hour bus journey to the Kinabatangan river where we went on multiple river cruises seeing lots of wildlife such as crocodiles, eagles and monkeys;

including the proboscis monkey which is native to Borneo and cannot be seen anywhere else. We went on jungle treks spotting critters such as spiders and even leeches! On the night we learnt how to do traditional Bornean dancing which was great fun.

Then it was the big day, the day to climb mount Kinabalu! It took the team and I nine hours to make it up to the mountain lodge. That night we had an early night as we had to be up at 1am to make the final push to the summit of the mountain in order to make it back for breakfast which took 8 hours. I must say climbing the mountain is the hardest thing I've ever had to do and the greatest achievement I've made. But then we knew what goes up must come down and finished the day off with the trek back down to the bottom of the mountain.

To finish off the trip we headed to a town named Kudat where we built a car park for the local mosque which was a challenge as none of us were used to manual labour. Then we held a sports day for the local children for whom we brought gifts such as pens and colouring books, which was a heart warming experience to see their faces light up and to see how grateful they are for things we most definitely take for granted.

Overall my trip to Borneo was truly amazing, I would most definitely do it again in a heartbeat and strongly recommend to anybody thinking about going on an expedition. **Bethany Fenn**

THURSDAY AFTERNOON CLUB

The members of the Eldwick and Gilstead Thursday Afternoon Club recently celebrated the sixtieth anniversary of the club with a celebratory lunch. The Thursday Afternoon Club was brought into being in May 1958.

So there have been 60 years of pleasant social afternoons, many hundreds of speakers and slide shows and even a gold prospector.

We have had several notable visitors, visits by choirs and importantly many day trips or half day coach trips to many different destinations.

Thanks are due to the officers who have volunteered over the decades to keep the club going such as treasurers, secretaries, Chairmen, tea-makers and the like.

We have all witnessed changes made during the different decades that the club has existed.

Congratulations

Congratulations to Janus Interiors who have just been voted by the Keighley and Airedale business awards the winner of the independent trader of the year award. Janus are one of our major sponsors for a number of the Village Society's larger events Well done.

Well done also to another of our sponsors, Taylor Made Treats, who were declared the winner in the Retail, Leisure and Hospitality Business category by the Telegraph and Argus Business Awards.



Eldwick & Gilstead Horticultural Society

Registered Charity No. 513988

101st Annual Show

of vegetables, fruit, flowers, preserves and home baking

Saturday 25th August

in the Memorial Hall, Eldwick

Doors open at 2.45 pm

Opening ceremony at 3.00 pm
by

Councillor John Goode

Refreshments – auction of unclaimed fruit, vegetables, flowers and home baking.

Paul Rae C.A.R.P.E.T.S
Est. 1983

I'll bring sample to you!

Please call Paul on 07778 568845

Over 30 years experience & friendly advice

BIRCHES

Open from 12 noon onwards

Saturday & Sunday

6 - 11pm weekly.

Dogs and children welcome.

NOW SHOWING SKY SPORTS

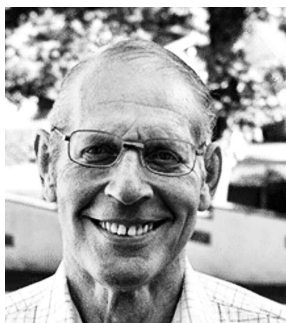
ELDWICK & GILSTEAD HORTICULTURAL SOCIETY

GOODE CHOICE FOR SHOW OPENER

It's that time of year again! The Society's 101st annual show takes place on Saturday 25th August in the Memorial Hall and Councillor John Goode has agreed to do the honours and open this event for us at 3.00 pm on the day.

John is one of three councillors who represent Cottingley ward on Bingley Town Council. As an Independent member, he leads many of the Town Council's horticultural projects which have enhanced the town centre and beyond. He is part of the summer markets team and is playing a part in revitalising our two railway stations through the Action Stations group.

John was born and brought up in Cottingley and his long service to the community was recognised when he received an invitation to a Buckingham Palace garden party earlier this year. He told the Newsletter that council work takes up so much of his time that he has so little left to tend his own garden that he mostly leaves that to his wife Diane.



Councillor John Goode

Readers are invited to come and see how our members and open class exhibitors have coped with the drought and managed to bring their flowers, fruit and vegetables up to show standards, not forgetting the mouth-watering displays of home baking, jams and preserves. See you there!

Our next meeting will be a Gardeners' Question Time session on Tuesday September 18th at 7.30 pm in the Memorial Hall.

This year's show will be well worth a visit. There are exhibits in the Memorial Hall and in the new church hall, where refreshments will be served.

COUNCIL NEWS

Trust you have all received by post a copy of the summer edition of Bingley Town Council Newsletter this will bring you up to date with all the key activities of the council

Our July meeting was relatively short as many of the agenda items were internal related matters. We had lots of correspondence from YLCA, (Yorkshire Local Councils Associations) advising various updates, publications for sale, briefings and Training for experienced Clerks.

The three Saturday Markets have gone well but as ever, we could do with more support from Bingley Residents, our last Market for this year will be on the 6th October. The council will undertake a review of the four markets to evaluate if it is a worthwhile venture to continue in 2019.

It might sound a bit premature to be talking about Christmas Street Decoration but it is important that we plan in advance. Over the last two years, we have changed, added lights in the trees around the Town Square, and changed the features on the main lighting columns. This year we plan to change the rope lights fitted around the lampposts, Main St, Wellington St and Chapel. The ones currently used are passed their sell by date; we will also replace the lighting in the 10 number triangular features originally installed on the mail light columns in years past. Bingley should look spectacular for Christmas 2018. Light Switch on 24th November.

We are also running a schools competition for them to design a Christmas light feature, the winning school will have the feature displayed on the Main Street over the Christmas Period.

The works to install a pedestrian refuge on Park Road are planned for this financial year whilst no firm date has been given I am assured that it will commence in the next few months.

As ever if you have any issues you wish to be addressed by your local Eldwick Councillors please feel free to contact by e-mail or phone :-

mark.truelove@bingleytowncouncil.gov.uk
07809690398

or chris.oneill@bingleytowncouncil.gov.uk

Mark

BINGLEY JANUS

A CLUB FOR RETIRED MEN IN BINGLEY AND SURROUNDING AREAS,
MEETING AT ELDWICK MEMORIAL HALL ON THURSDAYS FROM
10a.m. to 12p.m.

NEW MEMBERS ALWAYS WELCOME

Secretary: Graham Anderson 01274 563843

SEPTEMBER

13th Pat Osborne : Ken Dodd --- King of Comedy

20th Alan Mirfield : Up-date on Prince of Wales Park

27th Tim Davey : Timothy Taylors History and Longevity

OCTOBER

4th Geoff Budd : The Final Continent

11th Colin Holt : Other Majesty's Service

18th Mike Deegan : Up-date on Piracy on The High Seas

25th Pat Wherity : Re-building a school in Nepal after the devastating earthquake of 2015

NOVEMBER

1st James Newton : Travels in Patagonia

8th Andrew Healdsworth : An Inspector Calls (with apologies to J. B. Priestley)

15th Wally Quirk : The Lister Family

22nd Ian Dewhirst M.B.E. (a subject of his choosing)

29th Ron Harding : DNA and Us

DECEMBER

6th Stuart Ormondroyd : World Sport from the STRI perspective

13th (Ladies' Day) Stuart Atkins : Sammy Khan --- Songwriter



WINNER OF THE INDEPENDENT TRADER OF THE YEAR

KITCHENS, BATHROOMS
& BEDROOMS

For more information or to discuss
your project call:

01274 566100

Unit 1A Leonards Place, Leonard Street
Bingley, West Yorkshire BD16 1DP

www.janusinteriors.co.uk
info@janusinteriors.co.uk



JCH

Electrical Services Ltd

Professionally covering all aspects of
domestic Electrical & Security work
including CCTV

Over 31 years experience
City & Guilds trained

Tel: 01274 511433 (Eldwick)

Mobile: 07788 418050



Andrew Tracey
Plumbing and Heating Services
(Eldwick)

- Central Heating Systems
- Boiler Exchanges
- Bathroom Installations
- Tiling
- General Plumbing



211677



Tel: 01274 967710/07799536605

WILKINSON & WHITLEY LTD.

ALL MODEL SERVICING

MOT TESTING

TYRES

BRAKES

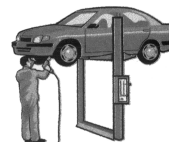
EXHAUSTS

AIR CON. REPAIRS

SERVICE LIGHT RESET

LIME STREET, BINGLEY

01274 562787



BATTERIES

WELDING

ALL MAKES

Yorkshire Countrywomen's Association

The speaker at our meeting in June was Ann Oakden and her sister Christine. Ann explained to the members how she traced her ancestors and explained about the census forms you can use. She also showed members how to produce a Family Tree. It was extremely interesting.

Our next meeting will be on Tuesday 11 September. Our speaker is Richard Freeman who will be talking about the Shipley Glen Tramway.

The Macmillan Coffee Morning is on Friday 28 September. 10am to 12.30pm. At the Eldwick Memorial Hall. There will be a cake stall and a raffle.

DOG FOULING

It seems to be an ongoing problem caused by some irresponsible dog owners. Don't these people realize that, besides being a serious health hazard, it is also an offence to let their dog foul without cleaning it up, which warrants a £1,000.00 fine if caught.

Yes we know, it's catching these law breakers who I suppose think it's funny and play "Catch me if you can". Well one day, someone will be caught, and I for one, hope they are named and shamed.

While we are on the subject, why do dog owners/walkers, think it's their right to let their dog urinate and deface people's property i.e. walls, fencing and gate posts, leaving urine stains and a smell, leaving the owners of the property to swill down with water and disinfectant or bleach regularly. Why on earth can they not teach their dog to do these things on their own property?

It is encouraging to read that our two Councillors, Mark Truelove and Chris O'Neill are getting involved and take this complaint seriously, and I and many others in the community wish them well in trying to stop this unnecessary crime.

Name & address supplied



Indian & Kashmiri Cuisine
Open 7 days from 5pm - 11pm
Early booking essential

Clarke House, Keighley Road
Bingley BD16 2RD
Telephone 01274 563 777
www.shamabingley.co.uk
Email: info@shamabingley.co.uk

Five Rise Locks Hotel & Bistro

Come and sample our new Bistro Menu
Available from 6:30pm - 8:30pm
Family Events.

Available for Weddings, Parties, Funerals,
Family Gatherings and More.

Let our Family look after your family.
Christmas Menus now available

Telephone 01274 565296

Five Rise Locks Hotel, Beck Lane
Bingley BD16

✠ THE ELDWICK CHURCH ✠

MESSY CHURCH

Saturday 15th September 4.00 – 5.45 pm
Messy Church is a worshipping community of all ages, it is for all the family. It will be held in the church hall and the church. There will be craft activities as you arrive in the church hall, stories from the Bible, songs and prayers in the church – rounding off with sharing a simple meal together in the church hall. This is an event for all the family – whatever your age, why not come and join in the fun!

PAUSE TO PRAY

Wednesday 5th September 2.00-3.00 pm
Wednesday 19th September 2.00-3.00 pm

THE ELDWICK CHURCH FELLOWSHIP

Thurs. 20th September Daniel McLoughlin
The Donkey Sanctuary Assisted Therapy Centre.

SERVICES

26th August

10.30 am Holy Communion led by
Rev Barbara Walls.

From the start of September Sunday
Services will now be held in the new hall

2nd September

09.15 am Holy Communion led by
Rev Barbara Fairburn
10.30 am Morning Worship led by
Rev Peter Mayo-Smith.

9th September

10.30 am Holy Communion led by
Rev Peter Mayo-Smith.

16th September

09.15 am Holy Communion led by
Rev Peter Mayo-Smith.
10.30 am Morning Worship led by
Rev Ruth Crompton.

Tec2k

Computer Problems Resolved Local to Eldwick

Repairs and upgrades to Laptop & desktop
computers

Resolve problems with broadband or WiFi
Home appointments no problem
Anything to do with electronics
please call for advice

Tel Stuart on 07958-994951
Visit our Web Site for full details
www.Tec2k.co.uk

Private Tuition

(Qualified Primary School Teacher)

Help your child reach their full potential in a
positive and encouraging environment.
From pre-school onwards

- Getting ready for primary school
- Ongoing support in numeracy, literacy & science
- GCSE Maths
- School entrance exams

First session free
Cathy Levis
01274 568602 (Gilstead)

Childminding Vacancies Available

Telephone Cathy Levis on
01274 568602 / 07585 449275

Most recent Ofsted inspection "This provision is
strong ... children enjoy their time with the
childminder ... children are well cared for in a
warm welcoming environment ... the childminder
is highly skilled".

23rd September

10.30 am Holy Communion led by
Rev Barbara Walls.

30th September

10.30 am Morning Worship Mission
and Outreach.

REGULAR WEEKLY EVENTS

Tuesday - 09.30-12.00 Church Café
Wednesday - 09.30 – 12.00 Embroiderers
(1st and 3rd) / Probus (4th)
13.30 – 15.30 Craft Group
Pre School Group - 08.45 – 15.15 Monday -
Friday.

REGULAR MONTHLY EVENTS

1st Friday in the month Friday Footsteps.
3rd Thursday in the month The Eldwick
Fellowship.
Mid Saturday Messy Church.
Pause to Pray 1st and 3rd Wednesday.

CHURCH HALL BOOKINGS:- Contact Julie Smith

FROM ELDWICK PRIMARY SCHOOL Our Hoglet

Evie, Barney and Sophie found a hoglet in the woods
on Swan Avenue. Evie picked it up with her coat and
put it in the bushes. They went home thinking it was
fine but then they phoned HERBY (the Bingley
hedgehog charity) to find out what to do.

They got told to get a box and take it home. Then they
went back to the woods and phoned HERBY to tell
them that they'd got it. They drove to HERBY's
headquarters. The people gave it a check-up and
removed all the fly eggs.

If they had waited any longer the flies would've
hatched and eaten the hedgehog's skin until it died.
They named the hoglet Hattie and it was reunited with
its sister and brother from Eldwick Primary School
playing field. Unfortunately their mum was run over.

There is still one of the family of hedgehogs missing so
look out for it around Swan Avenue and if you find it,
call HERBY!

By Evie and Barney Limbert and Sophie Dean.

COFFEE CAKE CHAT

Every Tuesday 9.30 am – 12 noon

The Eldwick Church

Fresh Fairtrade Coffee & Tea –
Home made cakes

First Tuesday Of The Month we have
Craft & Book Stalls in The Cafe



We deliver fresh, gift-wrapped flowers locally,
7 days a week with prices starting at
£25.00+ delivery.

Beautiful Wedding Flowers
Funeral & Sympathy Flowers
Special Occasions Gift Wrapped Plants
Tel: 01274 563750

Flowers by Eldwick Post Office

CENTURIES ON THE FARM

Only fifty years ago there were still over 40 small farms encircling Eldwick from Intake Gate in the north (Dick Hudson's farm), to Warren House farm to the west, Milnerfield's Home Farm in the south and Faweather to the east. Clustered around Eldwick village were farms at the Corn Mill, Eldwick Spring, Golcar, Cropper Fold, Low Fold and Glovershaw. How many of these today are active farms? Perhaps only Milnerfield.

Most of the former farms have 16th/17th century buildings. However, only Faweather is of greater age and is the subject of this article, thanks in part to the late Geoff Fawcett. His knowledge, from his own farming there, as well as from his father, and that from neighbouring farmers, now forms a valuable archive. It was Geoff himself who provided archaeologists with a treasured item. Neighbourly as he was, Geoff was helping Horner Wilson, from next door Birch Close repair a drystone wall, using small stones for packing. Picking one up, there was something different about it and, once passed to local experts for display at Bradford's Cartwright Hall museum, it gained recognition as a Stone Axe Head. Of Neolithic Age. This could have been ideal for woodland clearance around Faweather in a sheltered hollow below the moors. Geoff would show a large Cup and Ring Stone of Early Bronze Age at his farm on which it is said John Wesley, on a visit to Bingley, stood to preach.

The origins of Faweather in detailed documents, date to monastic times. The Cistercians of Rievaulx were granted lands at 'Faudre' in 1131 and 1150. Granges were the home farms of the time and so Faweather Grange assumed such a title and, initially, like many in Yorkshire was a sheep rearing and shearing estate, leading to 'monastic millionaires' existing in a wool empire. Later documents relate how Faweather was different because it had a foundry. A quote from 1250 said, 'Almost no handiwork is wrought without iron, no field is eared, no tilling or craft used, nor is any building constructed without iron'. Wood for charcoal for fuel for the furnace was around Faweather. Ironstone nodules have been found in local becks, like Glovershaw and even though they only yielded 30 per cent of ore would have been a valuable resource.

Parish registers show lots of entries of ordinary family records but after the Dissolution the gentry controlled tenanted farms. Faweather was owned by Lane Fox of Bramham Park, Golcar from 1490 by the Hawksworths of Farnley and others by the Crompton Stansfields of Esholt. Faweather

Grange is typical of properties that evolved over a period of time as a structure. The official Listed Building entry for it concludes the present stonework encases a timber framed house of post-Medieval date of the 16th century or, less likely is it a 17th century rebuild using original timbers. The other structures to which Geoff would lead guided tours were his two Ice Houses, one of which was just outside the farm cottage. Possibly of 17th century origins the entrance is dated J.D. 1778 for John Denby the owner at the time, cut out of solid rock underground and accessed by a flight of nine stone steps. The other, which is pictured, dates from 1727, for the Denby family as a walk in barrel vaulted construction into the hill on solid rock. The



nearby spring with a stone clapper bridge was partly dammed in later years and was known by Geoff as the Swimming Pool. Records from the 17th century show farms were mainly arable and list fields by name, areas in acres, rods and perches, as well as yearly yield from the average fifty acres. Obviously there were a few cows for dairy produce, pigs, fowl and horses and when farms were sold off the list of livestock was supplemented by the house contents, tools and, later, machines. At Faweather field names included Six Days Work, Butter Croft, Great Baile Close, Orchard and Far Pasture. Round his fields and woods Geoff would reel off the names of all long established and remembered titles, which would have been listed on the Tythe Maps and numbered. Due to the Lane Fox properties around Eldwick such maps were to be found archived in Leeds.



Pictured are the farm buildings, Faweather



Grange and the 19th century photo of the Hasse family on a cultural visit. Alexander Hasse was a fine art dealer and publisher from Baildon.

Families like Denby, Addyman, and Rycroft continued in tenancy through to relatively recent times. The last published census that of 1911, lists John Denby, farmer and grazier at Faweather and Grange Farm Faweather has John Addyman with the same occupation plus dairy farmer. Next to those was Little London, a pack horse meeting place where Mr Nowell was the last working clogger. All this was too soon for the Fawcetts being in Eldwick/Baildon since Ernest was born in 1898 near Pateley Bridge but by 1939 was at Faweather as a dairy farmer. Geoff, 1930-2018, carried on the business until he retired. Thanks to him, the Faweather files were made much larger, for which we pay tribute.

SIMPSON'S ELECTRICAL SERVICES

(ELDWICK)

HOUSEHOLD INSTALLATION AND
MAINTENANCE WITH A PROFESSIONAL
FRIENDLY COMPANY

TEL: 01274 563794

FOR FREE ESTIMATES

WHERE SERVICE COUNTS

CITY & GUILDS

I.T.B. & P.E.R.A. CERTIFICATED

INTERIOR PAINTING AND DECORATING



Also

PICTURE FRAMING

by *Chris Bettles*

21 Mansfield Avenue, Eldwick

Tel: 01274 510252

Mob: 07941 364274



BOND GARDEN SERVICES

SIMON BOND

ELDWICK
BINGLEY

HEDGES TRIMMED

MOWING & TURFING

TREES FELLED/PRUNED

FENCING/PLANTING

01274 567439

07790 415593

janbond1956@gmail.com

PETER MARRIOTT PROPERTY SERVICES

Professional Painting & Decorating.
Other types of work also undertaken.

Please call to discuss your requirements.

Free estimates & advice.

No job too small

A friendly, reliable and professional service

07985 050543

01274 510969