

Eldwick Newsletter

Village Society

Issue No. 475 June 2018

GALA DAY - SATURDAY 30TH JUNE

Eldwick Recreation Ground THEME "Up, Up & Away"

Come along and enjoy your own local community event
Many local groups and organisations will be represented
All proceeds go to local charities and organisations.

STARTS WITH PARADE - JAZZ BAND - DECORATED FLOATS

BRASS BAND - DANCING - CARS

Parade assembles in Barnaby Road 12.15

judging 12.30pm - departs 12.45pm

OPENING CEREMONY 1.30pm Gala Queen Miss Laura McDermott

ENTERTAINMENT IN THE AIR BMMF DAKOTA at 3.20pm

ON THE GROUND Eldwick Fell Race, First Blast Brass Band, Games

Professor Seltsam's Silly Circus Show, Phoenix New Orleans Jazz Band

Childrens' Races, Stalls, Circus Skills, Games, Rides

Pony Rides, Bouncy Castles, and lots, lots more

Eldwick Fell Race 3pm start, 3 mile 550ft climb

Junior Fell Race 3.25pm start 1mile

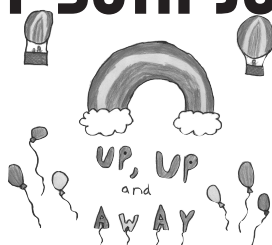
MUSIC Phoenix New Orleans Jazz Band, First Blast Brass, Dance Displays

SPORT Children's races and ELDWICK FELL RACE (Senior & Junior)
Enter on the day - details on www.bingleyharriers.org.uk

FOOD A feast ! Burnt Bangers with the Newsletter Team, Ice Creams
Afternoon Teas in the New Church Hall

Find us on Facebook - Eldwick and Gilstead Gala
E: gala@eldwickvillage.co.uk

2018 GALA SPONSOR Bingley CO-OP



DIDDY DISCO

Friday 22nd June

6.00pm - 6.45pm

Eldwick Memorial Hall

GALA DISCO

Friday 22nd June

7.00pm - 8.30pm

Eldwick Memorial Hall

PET SHOW

Monday 25th June

6.15pm

Eldwick Memorial Hall

SCOUT & GUIDE FUN RUN

Friday 29th June start 7pm

Eldwick Memorial Hall

BINGLEY COUNCIL NEWS

The Town Council has completed 2 years of its 3-year term, as part of the regulations governing councils, the council has to elect the officers for the next 12 months. Accordingly, the following officers elected. Chair: - Ros Dawson, Vice Chair: - Marcus Dearden also Chair of Finance and General Purposes Committee. Chair of Planning: - Mark Truelove.

Councillors volunteered to be members of the various committees, Staffing, Green & Clean, EMAC, Town Centre Regeneration and the Neighbourhood Planning Working Group, each of these committees at their first meeting will elect a chair and Vice Chair.

The Chair welcomed John Brazendale who was recently elected as councillor for the Crownest Ward following the resignation of Michelle Chapman.

The Chair acknowledged the efforts of Chris O'Neill for organising the rota of council members in staffing the council stall and thanked Edwina Simpson for her work in her efforts in coordinating with Marcia Churley (Bradford Council Ward Officer for Shipley) in planning of the day.

The Council has committed to providing a pilot Market over the summer months; the dates are 2nd June 7th July 4th August and the 6th October. Your support is required to make the market a great success

We are still working towards the development of the Toilets/Office and looking at ways of supporting a changing places facility in Bingley. We hope to have a positive outcome in the not too distant future.

You are no doubt all aware of the new Data Protection Regulations which have recently been introduced. The rules surrounding these regulations are quite complex, the council is looking to undertake training of Councillors to give them a greater understanding of these requirements. We as councillors have had to agree or otherwise to have our full details to be displayed on the council web site.

On a brighter note, this year's floral display will be installed commencing the second week of June, not only in Bingley but also in other areas of the community; look out for the display in Eldwick.

Do not forget you can catch up on all council news by going onto the Bingley Town Council web site.

Mark

GLEN TROUPERS

DATES FOR YOUR DIARY:

Monday 11th and 25th June

Monday 9th and 23rd July.


BIRCHES

Open from 12 noon onwards
Saturday & Sunday

6 - 11pm weekly.


Dogs and children welcome.

NOW SHOWING SKY SPORTS



500 years
1518 - 2018
Bingley Parish Church, Old Main Street, Bingley, BD16 2RH

Organ Recitals



Tuesdays - 7pm
5th June - 3rd July
Guest organists including:

- 5th June: Geoffrey Coffin
- 12th June: Malcolm Bentley (All Saints, Bingley) Includes a brief talk about the Organ
- 19th June: Edward Scott
- 26th June: Paul Dewhurst (Leeds Minster)
- 3rd July: Christopher Rathbone (St Margaret's, Ilkley)

Free Entry - Retiring Collection

facebook.com/BingleyParishChurch www.allsaintsbingley.org.uk Tel: 01274 565079



The Aire Valley Singers
Directed by Charles Rhodes
With accompanist Thomas Dixon
Present

Feel the Spirit

Sacred and secular music for a summer evening
including *Feel the Spirit* by Rutter,
Trois Chansons de Charles D'Orléans by Debussy & folk songs from round the world

7.30pm
Saturday 7th July 2018

The Eldwick Church
Otley Road
Eldwick
BD16 3EQ

tickets £10 & £8 concessions available at the door or in advance phone 07738 709188

Tickets in aid of The Eldwick Church Building Fund
Refreshment donations in aid of Pathway Breaks

www.airevalleysingers.com



Paul Rae C.A.R.P.E.T.S
Est. 1983

I'll bring sample to you!
Please call Paul on 07778 568845
Over 30 years experience & friendly advice

ELDWICK & GILSTEAD HORTICULTURAL SOCIETY

PASSIONATE ABOUT EUPHORBIAS

People, Plants, Pleasure and Passion was the title of Don Witton's presentation to a full house in the Memorial Hall last month. It contained all those four P's in abundance and you could have added a fifth P: Perennials, because Don doesn't muck about with any annuals, much preferring to care for his national Euphorbia collection comprising 124 different species and cultivars.

This plantsman's treasure trove can be found at Firvale allotment gardens on the southern edge of the village of Harthill near Doncaster.

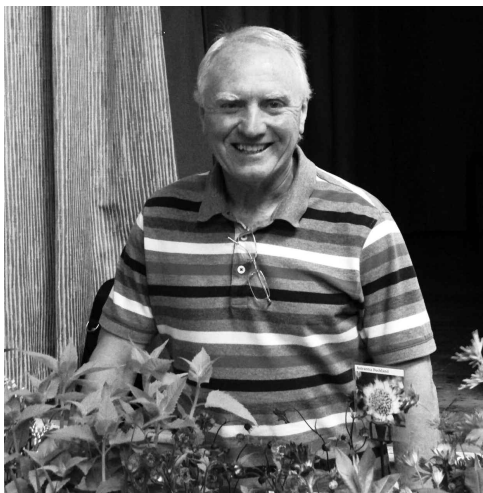
Visitors to his allotment will see that Don has developed 13 spectacular island beds mixed with other hardy herbaceous perennials. Some plants are also displayed in pots and containers. Individual Euphorbia plants are labelled, whilst all plants are labelled on sketch maps which are available to visitors when viewing. All the beds are surrounded by paths and are mainly in full sun.

Don is a retired schoolteacher and has been a gardener for over 40 years and an avid 'Hardy Planter' (hardy herbaceous perennials) for 25 years.

A skilled photographer, Don's slide presentation gave our audience a colourful impression of his Plant Heritage National Collection of hardy Euphorbia which has been featured twice on BBC2's Gardeners' World.

He has exhibited at the RHS's Tatton Park Show for over 10 years and been awarded a collection of medals including two Gold.

In addition he has written two books on Euphorbias for the Hardy Plant Society and runs a small nursery specialising in a large range of Euphorbias (including rare and desirable varieties), perennials and Euphorbia seed.



Don Witton, expert on Euphorbias

I found Don an interesting speaker and raconteur. He had so much to share with us that I confess I had to resort to his website to check on some of the information. (And how to spell "Euphorbia"!).

Often referring to himself in the third person, he told us that he lives in Don's bungalow in Harthill where you can find two Tory MPs in a bed in his front garden. The are actually two *Meconopsis baileyi*, commonly known as Tibetan blue poppy. Don found them on his travels, couldn't remember their proper names and christened them Tories because of their bright blue colour.

Readers can view Don's Euphorbia collection by appointment from March to July. Admission is £3.00 and proceeds will be donated to the National Gardens Scheme.

You can also come and see us at the Gala on Saturday 30 June where we'll have plants for sale and lots to talk about. **Mike Hitchen**

CHILDREN'S SHOW AND SPRING FAIR

Due to time and space constraints the results of our Children's Show missed inclusion in the last Newsletter, so here they are:

Cupcakes: 1st - Billy Franz;
2nd - Florence Hodgson; 3rd - Joey Franz.
9-12 years: 1st - Trixie Franz;
2nd - Martha Steven; 3rd - Daisy Stevens.
Miniature Garden: 1st - Florence Hodgson;
2nd - Billy Franz.
9-12 years: 1st-Trixie Franz; 2nd-Elena Marsh
Vegetable Animal: 1st - Florence Hodgson;
2nd - Billy Franz; 3rd - Megan Atkins.
9-12 years: 1st - Maison Corrale;
2nd - Trixie Franz; 3rd - Ben Pickles.
Photograph: 1st - Daisy Steven;
2nd - Jessica Coate; 3rd - Martha Stevens.

Congratulations to Florence Hodgson who came away with the Raby



Trophy for the most points scored and to all the children, parents and grandparents who helped to make our show successful.

Picture shows: Jeanette Wallace who presented the Raby Trophy to Florence Hodgson

Squadron Leader Allan Martin 1946-2018

It is with great sadness that we announce that Squadron Leader Allan Martin, Eldwick's original Gala Spitfire pilot, died peacefully on May 8th, the anniversary of his entry into the RAF in 1963.

Allan was a fast jet pilot having flown Lightnings, Phantoms and Tornados. He was also invited to fly for The Battle of Britain Memorial Flight based at Coningsby.

It was about 25 years ago that he first gave his thrilling Spitfire display at the Gala. That same year, his wife Sandie opened the gala and presented fancy dress prizes. Since then, they had become great friends of the community,

attending the gala when Allan was no longer able to fly due to ill health.

He leaves Sandie, daughters Helen and Sarah and six grandchildren. Our condolences go to all the family.

The picture shows Allan proudly wearing his Eldwick Gala tee shirt under his flying suit.



KITCHENS, BATHROOMS
& BEDROOMS

For more information or to discuss
your project call:

01274 566100

Unit 1A Leonards Place, Leonard Street
Bingley, West Yorkshire BD16 1DP

www.janusinteriors.co.uk
info@janusinteriors.co.uk



JCH
Electrical Services Ltd

Professionally covering all aspects of
domestic Electrical & Security work
including CCTV

Over 31 years experience
City & Guilds trained

Tel: 01274 511433 (Eldwick)
Mobile: 07788 418050



PETER MARRIOTT PROPERTY SERVICES

Professional Painting & Decorating.
Other types of work also undertaken.
Please call to discuss your
requirements.

Free estimates & advice.
No job too small

A friendly, reliable and professional service

07985 050543
01274 510969

SIMPSON'S ELECTRICAL SERVICES

(ELDWICK)

HOUSEHOLD INSTALLATION AND
MAINTENANCE WITH A PROFESSIONAL
FRIENDLY COMPANY

TEL: 01274 563794

FOR FREE ESTIMATES

WHERE SERVICE COUNTS

CITY & GUILDS I.T.B. & P.E.R.A. CERTIFICATED

WILKINSON & WHITLEY LTD.

ALL MODEL SERVICING MOT TESTING

TYRES

BRAKES

EXHAUSTS

AIR CON. REPAIRS

LIME STREET, BINGLEY



BATTERIES

WELDING

ALL MAKES

SERVICE LIGHT RESET

01274 562787

Yorkshire Countrywomen's Association

The meeting on Tuesday 8 May was our Annual AGM. Subs are now due £17. This was attended by 25 members. Our speaker for the evening was Lucy Marshall from Skipton talking about how she chose reflexology after being a make up artist for Molton Brown in London. It was very interesting and most of the members had a go at massaging their hands. One date for your diary, 28 September our Macmillan Coffee Morning.

Our next meeting is on 10 July and the speaker will be Ann Oakden, Genealogist. Her talk will be on An Ancestral Journey. Going forwards backwards.

New members are always welcome. Please ring Bev on 01274 565077

NEW
for 2018

Take time to enjoy

BINGLEY

SUMMER MARKETS

1st Saturday of the month
2 June, 7 July
4 August, 6 October
9am - 3pm
BINGLEY MARKET SQUARE

COFFEE CAKE CHAT

Every Tuesday 9.30 am – 12 noon

The Eldwick Church

Fresh Fairtrade Coffee & Tea –
Home made cakes

First Tuesday Of The Month we have
Craft & Book Stalls in The Cafe



We deliver fresh, gift-wrapped flowers locally,
7 days a week with prices starting at
£25.00+ delivery.

Beautiful Wedding Flowers
Funeral & Sympathy Flowers
Special Occasions Gift Wrapped Plants
Tel: 01274 563750

Flowers by Eldwick Post Office



Indian & Kashmiri Cuisine
Open 7 days from 5pm - 11pm
Early booking essential

Clarke House, Keighley Road
Bingley BD16 2RD
Telephone 01274 563 777
www.shamabingley.co.uk
Email: info@shamabingley.co.uk

Five Rise Locks Hotel & Bistro

Come and sample our new Bistro Menu
Available from 6:30pm - 8:30pm
Family Events.

Available for Weddings, Parties, Funerals,
Family Gatherings and More.

Let our Family look after your family.
Christmas Menus now available

Telephone 01274 565296

Five Rise Locks Hotel, Beck Lane
Bingley BD16

✠ THE ELDWICK CHURCH ✠

MESSY CHURCH

Saturday 16th June 4.00 – 5.45 pm
Mussy Church is a worshipping community of all ages, it is for all the family. It will be held in the church hall and the church. There will be craft activities as you arrive in the church hall, stories from the Bible, songs and prayers in the church – rounding off with sharing a simple meal together in the church hall. This is an event for all the family – whatever your age, why not come and join in the fun!

PAUSE TO PRAY

Wednesday 20th June 2.00 – 3.00 pm
Wednesday 4th July 2.00 – 3.00 pm
Wednesday 18th July 2.00 – 3.00 pm

THE ELDWICK CHURCH FELLOWSHIP

Thursday 21st June Coffee Evening
in aid of The Children's Society
Friday 20th July Luncheon Outing

SERVICES

24th June

10.30 am Holy Communion
led by Rev John Peet.

1st July

09.15 am Holy Communion
led by Rev Barbara Fairburn.
10.30 am Family Service led by
Rev Peter Mayo-Smith.

8th July

10.30 am Holy Communion led by
Rev Peter Mayo-Smith.

15th July

09.15 am Holy Communion led by
Rev Peter Mayo-Smith.
10.30 am Morning Worship led by
Mrs Patricia Henny.

22nd July

10.30 am Holy Communion led by
Rev Ruth Crompton.

Tec2k

Computer Problems Resolved Local to Eldwick

Repairs and upgrades to Laptop & desktop
computers

Resolve problems with broadband or WiFi
Home appointments no problem
Anything to do with electronics
please call for advice

Tel Stuart on 07958-994951
Visit our Web Site for full details
www.Tec2k.co.uk

Private Tuition

(Qualified Primary School Teacher)

Help your child reach their full potential in a
positive and encouraging environment.
From pre-school onwards

- Getting ready for primary school
- Ongoing support in numeracy, literacy & science
- GCSE Maths
- School entrance exams

First session free

Cathy Levis

01274 568602 (Gilstead)

Childminding Vacancies Available

Telephone Cathy Levis on
01274 568602 / 07585 449275

Most recent Ofsted inspection "This provision is strong ... children enjoy their time with the childminder ... children are well cared for in a warm welcoming environment ... the childminder is highly skilled".

29th July

10.30 am Morning Worship Mission and
Outreach. The Emmanuel Project
David Kenyon.

REGULAR WEEKLY EVENTS

Tuesday - 09.30-12.00 Church Café
Wednesday - 09.30 – 12.00 Embroiderers
(1st and 3rd) / Probus (4th)
13.30 – 15.30 Craft Group
Pre School Group - 08.45 – 15.15 Mon- Fri

REGULAR MONTHLY EVENTS

1st Friday in the month Friday Footsteps.
3rd Thursday in the month The Eldwick
Fellowship.

Mid Saturday Mussy Church.

Pause to Pray 1st and 3rd Wednesday.

CHURCH HALL BOOKINGS:-

Contact Ann Shoebridge 564690

News from the Eldwick Church

On 10th June, our new Hall was formally dedicated by Bishop Colin Buchanan and by Reverend Dr Roger Walton in a special and joyful service. This was part of a weekend of celebration of the 125th Anniversary of the St Lawrence's building.

Rev'd Colin is a retired Church of England Bishop and Rev'd Roger is the current Chair of the Yorkshire West District of the Methodist Church, so we were well represented by both the Anglican and the Methodist traditions in our local ecumenical partnership. The Sunday afternoon service included Confirmation, when 6 candidates made their own promises to follow Christ and became adult members of the Church. We then tried out our Hall facilities en masse with celebratory tea and many many cakes!

We invite you to explore the new Hall for yourself on Gala Day, when cake, teas, coffees and refreshments will be on offer downstairs. Please do also take the time to visit our Upper Room, which affords lovely views across to Baildon Moor and internal views of the newly re- installed stained - glass Bruce Window, from the former Methodist Church building on Otley Road.

Our Tuesday Cafe has been held in the new facilities since 12th June. Please do join us any Tuesday from 9.30 am.

In other news, during the holiday period we are running an Eldwick Village Animal Trail (from 21 July until 1st September). There is a new route with more pictures to find than last year and 8 prizes to be won. We are launching the trail on Saturday 21st July, when maps will be on sale in the new Hall from 10.00 am until 2.00 pm. Come and enjoy light refreshments and have a look round the building. After that date, maps will be on sale at Eldwick and Gilstead Post Offices at a cost of £2.00. All proceeds to the Church Building Fund.

Andrew Tracey

Plumbing and Heating Services (Eldwick)

- Central Heating Systems
- Boiler Exchanges
- Bathroom Installations
- Tiling
- General Plumbing

Tel: 01274 967710/07799536605



211677

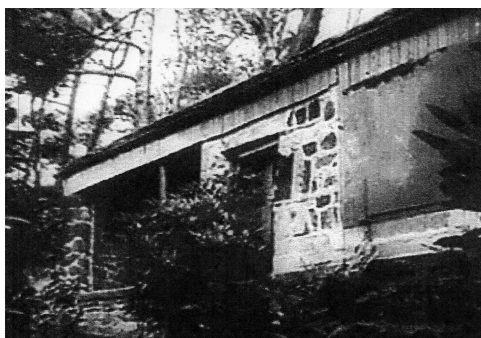


THE HOUSE THAT JACK BUILT?

Since 2013 the Friends of Prince of Wales Park have been at work every Wednesday and Saturday mornings, engaged on a mission to recapture the charms of this wonderful community facility. Built by the people for the people 150 years ago the park was once a remarkable and unique creation with places to walk, play or just sit and enjoy the scenery. Amongst the several permanent features were the late 19th century park keeper's Lodge and the 1753 Market Hall. The latter was removed from the centre of Bingley Main Street, opposite The Queens pub in 1885 when road widening and improvement were required. Provision was made in the park for both men's and ladies public conveniences as well as two shelters. Of those two, the most impressive was The Beehive, a circular structure with a beautifully designed roof and a curved wooden seat within. Two small structures were built close to the two quarry workings, one beside what is now known as The Arena, the other up on the Heath near the Forest School site. Both were for workmen and only that near the Arena has been 'rediscovered' from beneath vegetation. At any one time there were only a few men and 'lads' employed in the park under the supervision of the park keeper. The Lodge had other buildings in its grounds, a workshop and storage shed in which tools and machines were kept. The 'garden' of the Lodge was once immaculate and a large allotment adjoining had an eight window cold frame. The main nursery for park plants was actually in the Bailey Hills cemetery and the Prince of Wales Park staff worked there, as well as on sites in Bingley and Royd House in Wilsden. Today the Lodge, once an iconic building which introduced visitors to the park, is in a sorry state, let by the Council to a tenant. All would say it has also been let to deteriorate.

The most interesting revelation made by the Friends has been the discovery and unearthing of what was given the title of the 'Tea Room'. As with other features and, with some local knowledge, it was the old Ordnance Survey maps which gave the clues to the existence of structures. Due to vandalism and anti-social behaviour 50 years ago, many of the various buildings were either completely or partially demolished. The Market Hall was of course relocated to Bingley's Market Square in 1984, thanks to the efforts of Bingley Civic Trust. The public conveniences disappeared long ago although the former Ladies building is still next to the Lodge.

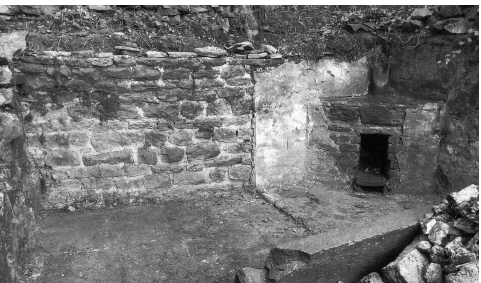
So the 'Tea Room' building actually had a dual use. The original building pictured,



shows the left hand side having an open aspect and that half was a public shelter with seating within on three sides. The door actually had an ancient gargoyle in the lintel and, as can be seen, the stonework was very rough. It was the right hand side that served as the workers mess room, hence the shutter, because it also stored small tools. Having identified the location, all that could be seen when work was planned to begin, were the two end wall stubs. Between and above those was a huge pile of rocks, remnants of the structure, covered by leaf mould and vegetation as in second picture.



Once uncovered on the right hand side, the rocks were moved left over a period of time, some with huge manual effort. The first revelation was a part of an upright cast iron pipe in one corner, which turned out to have been a chimney! This only became apparent as more layers of stone were removed, to find a simple fireplace with grate and still some cinders with ash. Work continued to reveal a stone floor, some whitewashed render, a back wall of exposed courses of stonework and the remains of the front wall, see third picture.



The most recent work by the Friends has been aided by experienced builders who kindly volunteered themselves, donated materials and loaned a cement mixer. In real life, pictured beside the newly constructed dry stone wall, are the three 'guests' – left to right, Cllr David Heseltine of Bingley Ward, Jon Atkinson, BMDC Senior Conservation and Design Officer and Cllr Andrew Fenton, Bingley Town Council. All three have helped on several other occasions for which the Friends are most grateful. Work progresses on the site and then a future use to be decided?

SUMMER FARMERS MARKETS IN BINGLEY

The first of four planned pilot Farmers Markets took place in Bingley Market Square on Saturday 2nd June. These are in response to repeated calls from the public for Bingley Town Council to revive the weekly markets. Future markets will be held on the first Saturday of July; August and October.

The June market saw around 15 market stalls in the Square, featuring fresh bread; hog roast; craft stalls; a plant stall and many others. In addition to a dozen traders new to Bingley, the regular flower lady and fish man were also present. Unfortunately the Cheese man was ill on the day.

There was also childrens entertainment, pictures to colour, a treasure hunt plus free face painting from a professional company. Four different entertainment acts performed hourly from 11:15, including Bingley Hand Bell Ringers; the Rick Huddy Band and a troupe of 35 child dancers.

These markets are being promoted by Bingley Town Council, with the traders being coordinated by Yorkshire Farmers Markets, who run similar markets in Otley, Baildon, York and other Yorkshire towns and cities. The idea is to see if there is public demand for these markets, judged by feet on the ground. After the October market the two organisers will decide whether and how we go forward with future, perhaps more regular, markets in Bingley.

The markets on Saturdays 7th July, 4th August and 6th October will hopefully attract more traders, as the market grows. They will again feature childrens entertainment, free face painting plus entertainment from several acts, with some already booked for each market.

The message is, BTC have endeavoured to meet the public demand for a regular market, in this pilot, but it must be well supported by the public, or the Council will not be able to follow this effort up with further markets going forward. Chris O'Neill

INTERIOR PAINTING AND DECORATING



Also

PICTURE FRAMING

by *Chris Bettles*

21 Mansfield Avenue, Eldwick

Tel: 01274 510252

Mob: 07941 364274



BOND GARDEN SERVICES

SIMON BOND

ELDWICK
BINGLEY

01274 567439

07790 415593

janbond1956@gmail.com

HEDGES TRIMMED

MOWING & TURFING

TREES FELLED/PRUNED

FENCING/PLANTING