

Eldwick Newsletter

Village Society

Issue No. 465 August 2017

The Eldwick Church Building Project News

We are pleased to announce that we have now committed to go ahead with the building of the new Hall to the rear of Church. We have awarded the building contract to MW & RF Brewster & Sons Ltd, based in Skipton, and are in the process of concluding the various legal arrangements with them as well as agreeing the detailed timetable of works. We hope that works will commence towards the end of August. Once contractors are on site, the work should take around nine months to complete.

During the work, safety is paramount for the builders, the Hall users and the public. Thus, once work starts, there will be no public vehicular access to the Church car park and the whole area will become a restricted site with safety fencing. It is also likely that the on-road parking directly in front of church will be suspended for the duration of the works, again for safety reasons. Access to Church will be via the normal pedestrian pathway. Access to the Church Hall will be clearly signed via a safe route around high fencing / hoarding which will separate pedestrians from the site works.

With limited parking in the village, it will be a challenging time. Already, some of the groups which use our church hall on a regular basis are considering car share and mini-bus arrangements.

Total secured funding now stands at 85% of phase 1 costs and we continue to fundraise. Thank you to everyone who has supported us with direct donations or at the Gala Cafe and church stalls. We continue to welcome donations, or you can support us by picking up a village Toy Trail map (£2 from the Eldwick Post Office). There is also a Summer Quiz available from Church Cafe entitled 'Places to visit during the Summer Break'. £2 per entry, prize to winner.

VILLAGE SOCIETY SPONSORS SET OF SHIRTS FOR ELDWICK JUNIORS

The photograph shows the President of The Village Society, John Edwards, displaying one of the new shirts. John was the first captain of the newly formed Eldwick Juniors in 1945. They paid for their first kit, by playing a team of men from The Acorn. The losers would pay half a crown each for the shirts. Eldwick Juniors won!



TAKE HEART

The defibrillator, which is on the wall outside Birches and the Memorial Hall had an "outing" the other night when a young lady became very breathless and the emergency services were called. The operator, on hearing the symptoms, immediately directed the caller to the defib machine, gave them the code for the box and told them to get it straight away. The box has a key code and the defib machine is inside. Once it is out of the bag, and activated, by pressing the start button, it starts to talk to you, taking you through all the procedures necessary. It is very simple to use and, be assured, it will not deliver an electric shock, unless, it decides that it is absolutely necessary.

Fortunately, the young lady concerned is fit and well and the issue was not heart related.

Eldwick & Gilstead Horticultural Society

Centenary 100 YEARS SHOW

100TH ANNUAL SHOW

of Vegetables, Fruit, Flowers etc. (Open, Amateur)

To be held in the Memorial Hall, Eldwick

Saturday 26th August 2017

Doors open 2.45 pm
Opening Ceremony at 3.00 pm by
Mr David Allison
FNVS & RHS Judge

Presentation of prizes and trophies
Auction of produce
Refreshments in the Church Hall after opening ceremony

ELDWICK PRIMARY SCHOOL



ELIZABETHAN DAY

On 10th July, Year 5 at Eldwick Primary School travelled down to Bingley Grammar School to take part in an Elizabethan Day. Many other schools were there and we worked with Year 10 pupils.

As we arrived the whole year group got excited. Firstly we went onto the field to see the birds of prey, some of which were very fluffy. This was really interesting because we were able to hold the birds. The glove we used was extremely rough but, more importantly, protected our hands.

After that we went inside to do drama from a play, Macbeth. All of a sudden, as we were planning scenes, four knights entered to tell us about the armour and how they used to fight at a tournament.

At the end of the day, we saw the knights fighting. The swords, which were clashing, were massive. 'To see them made me feel like I was a knight', commented Eva Walgrove, a pupil at Eldwick. Everyone was cheering and booing loudly whilst the tournament was happening.

We would like to thank Bingley Grammar School for creating so much fun at their Elizabethan day.

Written by

Eva Walgrove and Neve Willis

TERRIFIC TEMPEST

On the 28th June, Year 5 at Eldwick Primary School went to Bingley Grammar School and joined with Year 7 to perform 'The Tempest', one of William Shakespeare's plays. The children practised a lot in the hope of it being the best play they had ever performed.

The children from both schools worked really well together. Time flew by whilst the children rehearsed and memorised a song for the show. This was sung as a grand finale. Mrs Kershaw, head teacher from Eldwick Primary School, said, 'The song was lovely. I nearly started to cry'.

All the children played their parts extremely well, even though some were nervous, and the audience greatly enjoyed it. 'The children worked so hard. The play was magnificent', commented Mrs Johnson, a Year 5 teacher. The play was a great success and the children should be proud of themselves. 'The actors were amazing and I congratulate Shakespeare for coming up with such a good story', stated Alex Carney, a parent of one of the performers.

Written by

Hashir Hussain, Felix Carney and Layah Walker

Paul Rae C.A.R.P.E.T.S

Est. 1983

I'll bring sample to you!

Please call Paul on 07778 568845

Over 30 years experience & friendly advice

BIRCHES

9am – 1pm Monday to Friday

Breakfasts, hot and cold sandwiches,
tea, good coffee and cakes.

Eat in and take out.

Orders 01274 561265.

NOW SHOWING SKY SPORTS

ELDWICK & GILSTEAD HORTICULTURAL SOCIETY

Norfolk by coach, steam train and tractor!

Our group set off early on Friday morning from the Memorial Hall and headed south, stopping at Ye Olde Bell Hotel at Barnaby Moor just off the A1 for tea, coffee and scones. Suitably refreshed we headed for the National Trust property of Oxburgh Hall near Swaffham. Built in 1482 it is a moated hall surrounded by 70 acres of gardens, streams and woodland walks. A guided tour of the gardens and some of the woodlands was included. From there we made our way to the Knights Hill Hotel and Spa near Kings Lynn for the next two nights. Some of our group took advantage of the swimming pool and the other leisure facilities available.

After a substantial breakfast we set off along the coast road going through Hunstanton, Brancaster and Wells-next-the-sea, before going south to Holt. Here we boarded a private coach on the North Norfolk Railway pulled by a

steam engine for the 25-minute journey to Sheringham. Unfortunately the train was delayed and so we had only a very small amount of time here before leaving for Holkham Hall, where the group was divided into two. Each group in turn went on a 45-minute tractor ride with guide and commentary around a small part of the grounds, then a look around a "farm to fork" exhibition at the Hall. This was followed by a tour of the massive 6-acre kitchen gardens located a mile from the house so as not to ruin the view. The day was rounded off with a very quick visit to Norfolk Lavender on our way back to the Hotel.

The final day saw us head north on our way home but not before we stopped at Doddington Hall near Lincoln for the obligatory tea, coffee and scones. The Hall was built in 1595 as an Elizabethan mansion and appears to be unchanged externally. However, it was



Unicorns at Doddington Hall

subsequently modernised internally during Georgian times so very little of the original interior remains. The group were able to go on the guided tour of the House, and free to look around the extensive grounds, gardens and kitchen gardens.

We then left late afternoon arriving back at Eldwick around 6.00pm. The weather had held - it didn't rain too much and the sun shone for a good part of the trip.

COUNCIL NEWS

House & vehicle crime is at a high level in Eldwick & Gilstead at present, as you may be aware. The Eldwick councillors from Bingley Town Council have had two meetings in recent weeks with an Inspector & Sergeant from Shipley PS to discuss this issue, and others. It is not prudent to reveal steps the Police are taking at present, but we were reassured that significant action is in hand.

One issue we were concerned about was the statistics we were given about crime in Eldwick. In a four week period the Police had recorded 5 house or vehicle crimes. Simply from monitoring Facebook/Next Door app etc, we were aware of 15 such crimes. This lack of reporting gives the Police a problem. They resource areas on known crime patterns. SO, it is vital that if you are affected by a burglary/ crime against vehicle, or indeed any crime, that it is reported to Police. We are then helping the Police to help us!

Another topic we discussed with the Police at length was traffic speeds on Otley Road, Park Road, Ferncliffe Road and Warren Lane. These roads are all to be subject to Community Speedwatch and Operation Spearside in the coming weeks.

The Police reps have agreed that the following is a simple guide on how to report different types of events:-

Life in peril / crime currently occurring - CALL 999
Crime discovered after the event - call 101, or to avoid a potentially long wait, log the crime on-line or on Live-Chat
Suspicious cars / people in the area - call 101 or on Live Chat

Drug related issues - call 101; Live-Chat or anonymously via Crimestoppers

On line logging is via -

www.westyorkshire.police.uk/reportcrime

Live Chat is via-

<https://www.westyorkshire.police.uk/contactus>

Crimestoppers - at <https://crimestoppers-uk.org/in-your-area/yorkshire-humberside/west-yorkshire/>

The Police IT systems analyse all reported crime and repeat offences etc. are highlighted. Repeat vehicle registrations reported are also tied together and highlighted, so all this data helps the Police.

Additionally, to keep your neighbours and others in Eldwick / Gilstead aware of where crime is happening you can report it to the many local Facebook groups and/or to the Next Door app if you are connected to that. The Police agree that social media is a good way to make people aware of what is happening in your area / what to look out for and to monitor suspicious vehicles.

Market Survey

Thanks to everyone for returning the survey forms, much appreciated. A meeting took place on Thursday 27th with National Markets Association to discuss the results of the survey, we will advise the outcome in next month's Newsletter.

Christmas 2017

I bet you are all wondering why we are talking about Christmas in July. It is important to start early, to meet the various time lines associated with the procedural processes as required for council business. I am pleased to say that we will be adding additional lights to a number of trees over and above those illuminated last year. Also we are looking to include new column features on the lamp post along the edge of Market Square.

Parks and Woodlands department of Bradford Council have removed several diseased trees from around the Arts Centre and the remainder of the trees pruned where required.

Bingley Town Council will be talking to the

Primary Schools when they re-open in September, as we intend to run a competition for the schools in the area, to design a Festive Feature. The winning school will have their design turned into a light feature and displayed in the town square over the Christmas period.

As part of the Christmas Light Switch-on Bingley Town Council will be working in conjunction with the chamber of trade to run a market on the town square and in the Arts Centre with Santa giving out presents to the children. It is intended to have several children's rides located around the Arts Centre. Light switch-on 4.30 on the 25th of November.

Rail Stations

The Green and Clean subcommittee are in discussions with Northern Rail about adopting the Crossflatts and Bingley Stations looking at ways to enhance the appearance of the stations with Floral Displays.

Riverside Festival

You may have heard about the proposed Riverside Festival that was to be run in Myrtle Park on the 5th August. There were many objections to this event including Bingley Town Council. In discussions with Bradford Council they informed us that the event will not take place and permission has been refused to the organiser for the event to take place. We believe that the event has been relocated at Silsden to take place at the end of September on private land.

Andrew Tracey Plumbing and Heating Services (Eldwick)

- Central Heating Systems
- Boiler Exchanges
- Bathroom Installations
- Tiling
- General Plumbing



211677



Tel: 01274 560458/07799536605

WILKINSON & WHITLEY LTD.

ALL MODEL SERVICING

MOT TESTING

TYRES

BATTERIES

BRAKES

WELDING

EXHAUSTS

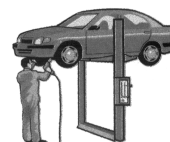
ALL MAKES

AIR CON. REPAIRS

SERVICE LIGHT RESET

LIME STREET, BINGLEY

01274 562787



For more information or to discuss
your project call:

01274 566100

Unit 1A Leonards Place, Leonard Street
Bingley, West Yorkshire BD16 1DP

www.janusinteriors.co.uk
info@janusinteriors.co.uk



JCH
Electrical Services Ltd

Professionally covering all aspects of
domestic Electrical & Security work

Over 30 years experience

City & Guilds trained

Tel: 01274 511433 (Eldwick)

Mobile: 07788 418050

Yorkshire Countrywomen's Association

The speaker for our July meeting was Maggie Smith. She gave a very interesting talk on Salts Mill. We have no meeting in August due to our trip to Chester which I hope everyone found very enjoyable.

Our next meeting is on 12 September. The speaker is Ann Drake (The Virgin Queen).

Forthcoming Event - Macmillan Coffee Morning. Friday 29 September 2017 at the Eldwick Memorial Hall. 10am - 12 noon.

New Members are always welcome.

Please contact Bev on 01274 565077.

"ELSTEAD LADIES' CHOIR"

Summer ends and we begin the Autumn Session on

Friday 8 September 2017 at 7-15 pm
in The Eldwick Church Hall, Eldwick
(building behind Eldwick Church,
Otley Road, Eldwick)

Autumn sees us rehearsing a mixed programme of carols and light music to sing at care homes/elderly groups. In January we begin to prepare our Spring programme.

NEW MEMBERS ARE ALWAYS WELCOME
(No Auditions)

Conductor Keith Newell 01274 563324
Librarian/Secretary
Linda Firth 01274 771684

COFFEE CAKE CHAT

Every Tuesday 9.30 am - 12 noon

The Eldwick Church

Fresh Fairtrade Coffee & Tea -
Home made cakes

First Tuesday Of The Month we have
Craft & Book Stalls in The Cafe

SIMPSON'S ELECTRICAL SERVICES

(ELDWICK)

HOUSEHOLD INSTALLATION AND
MAINTENANCE WITH A PROFESSIONAL
FRIENDLY COMPANY

TEL: 01274 563794

FOR FREE ESTIMATES

WHERE SERVICE COUNTS

CITY & GUILDS I.T.B. & P.E.R.A. CERTIFICATED



Indian & Kashmiri Cuisine
Open 7 days from 5pm - 11pm
Early booking essential

Clarke House, Keighley Road
Bingley BD16 2RD
Telephone 01274 563 777
www.shamabingley.co.uk
Email: info@shamabingley.co.uk

THE ELDWICK CHURCH

MESSY CHURCH

Saturday 16th September 4.00 - 5.45 pm
Mussy Church is a worshipping community of all ages, it is for all the family. It will be held in the church hall and the church. There will be craft activities as you arrive in the church hall, stories from the Bible, songs and prayers in the church- rounding off with sharing a simple meal together in the church hall. This is an event for all the family - whatever your age, why not come and join in the fun!

PAUSE TO PRAY

Wednesday 6th September 2.00-3.00 pm

Wednesday 20th September 2.00-3.00 pm

THE ELDWICK CHURCH FELLOWSHIP

Thursday 21st September Bruce Grainger
"Israel and Palestine - A Perspective"

BABY AND TODDLER PLAY

Wed. 13th September 9.30 - 10.30 am

Toy Trail 26th July - 3rd September.

SERVICES

20th August

09.15 am Holy Communion led by
Rev. Tracey Raistrick.

10.30 am Morning Worship led by
Mrs. Patricia Keene.

27th August

09.15 am Big Breakfast.

10.30 am Holy Communion led by
Rev Terry Porter.

3rd September

09.15 am Holy Communion led by
Rev David McAloon.

10.30 am Family Worship led by
Rev Peter Mayo-Smith.

10th September

10.30 am Holy Communion led by
Rev Peter Mayo-Smith.

Tec2k

Computer Problems Resolved Local to Eldwick

Repairs and upgrades to Laptop & desktop
computers

Resolve problems with broadband or WiFi
Home appointments no problem
Anything to do with electronics
please call for advice

Tel Stuart on 07958-994951
Visit our Web Site for full details
www.Tec2k.co.uk

Private Tuition

(Qualified Primary School Teacher)

Help your child reach their full potential in a
positive and encouraging environment.
From pre-school onwards

- Getting ready for primary school
- Ongoing support in numeracy, literacy & science
- GCSE Maths
- School entrance exams

First session free

Cathy Levis

01274 568602 (Gilstead)

Childminding Vacancies Available

Telephone Cathy Levis on
01274 568602 / 07585 449275

Most recent Ofsted inspection "This provision is strong ... children enjoy their time with the childminder ... children are well cared for in a warm welcoming environment ... the childminder is highly skilled".

17th September

09.15 am Holy Communion led by
Rev Peter Mayo-Smith.

10.30 am Morning Worship led by
Miss Doth Lund.

6.30 pm Evensong led by
Rev Peter Mayo-Smith.

24th September

09.15 am Big Breakfast.

10.30 am Holy Communion led by
Rev Barbara Walls.

REGULAR WEEKLY EVENTS

Tuesday - 09.30-12.00 Church Café

Wed. - 09.30 - 12.00 Embroiderers /Probus,
13.30 - 15.30 Craft Group

Friday - 19.15 - 21.15 Elstead Ladies Choir
Pre School Group - 08.45 - 15.15

Monday, Tuesday, Thursday and Friday.

REGULAR MONTHLY EVENTS

1st Friday in the month Friday Footsteps.

3rd Thursday in the month The Eldwick
Fellowship.

Mid Saturday Messy Church.

Pause to Pray 1st and 3rd Wednesday.

CHURCH HALL BOOKINGS:-

Contact Ann Shoebridge 564690



26 July to 3 September 2017

Enjoy a walk around Eldwick Village
and find the **Toy Trail Pictures**

Toy Trail maps available from Eldwick
Church, the Eldwick Gala in June
and Eldwick Post Office

Toy Trail Map Cost £2

The first 4 correct entries
drawn on Tuesday 5th September
will win a prize

All proceeds to:
Eldwick Church Building Fund
BUILDING FOR GROWTH



A partnership of St. Lawrence's Church of England & Eldwick Methodist Church

For all your Lingerie, Nightwear & Swimwear Amour de Femme Lingerie

Fantasia,
Fraya
Charnos, Lapel,
Panach,
Masquarade,
Curvy Kate
& Many More



87 Main Street
Bingley

01274 921 371

80% of women wear the wrong sized bra
Don't be one of them. Free fitting service. Just call in



We deliver fresh, gift-wrapped flowers locally,
7 days a week with prices starting at
£25.00+ delivery.

Beautiful Wedding Flowers

Funeral & Sympathy Flowers

Special Occasions Gift Wrapped Plants

Tel: 01274 563750



Flowers by Eldwick Post Office

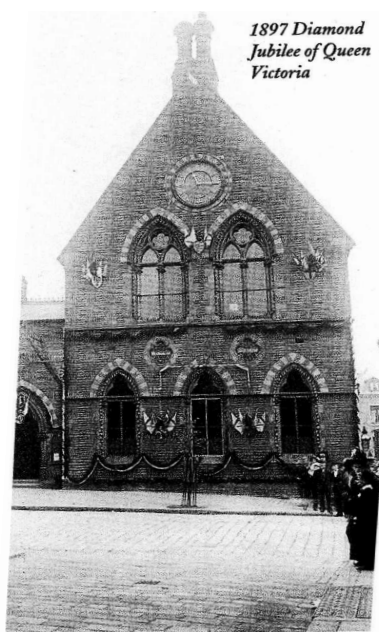
WHAT TIME IS IT MR. WOLF? A QUARTER TO ONE EVERY DAY!

The Eldwick Village Society has a commendable record of giving financial support to a variety of projects in the village, as well as to appeals in the wider locality. The latest gesture has been to make a donation to the fund which was set up to renovate the ornate clock on the former Bingley Mechanics Institute in Main Street. The project has been partially successful but funds are still required to offset the balance.

A press article suggested that the clock had been stopped for 40 years but that was an estimate, waiting for someone to suggest otherwise. Most will remember the dial showing 12 o'clock for many years but at least that was different to a previous stoppage 150 years ago! It was not because no-one remembered to wind it up but because a wonderful Victorian technological masterpiece was missing a vital element, can you believe – WATER?!

The story is very light hearted and could almost be told in a Fairy Tale! Once Upon A Time in a little town of Bingley, not many children went to school because they had to work like grownups. Bingley was full of smoky chimneys, house chimneys, train chimneys, even boat chimneys but the biggest of all were the mill chimneys reaching up to the sky. When there was a school for the children just over two hundred years ago, it was near the canal. Boats, some narrow, some very wide, came by without engines because they were pulled by horses on the towpath. The chimneys on the boats were from the oven because the boatpeople lived in the boat. The trains did not come by until after the school – the National School – was opened. Most people did not have watches so the mills had a bell or a horn to tell them when work was going to begin. So it was a very special thing that was put on the National School in Park Road – a very big clock, which is still there today but it is very sad because it does not work at all. People made the school into somewhere to live but did not make the clock to work. In the beginning everyone enjoyed watching the clock and children knew how to tell the time from it. So the clock was very proud and very happy, smiling at everyone who came to look.

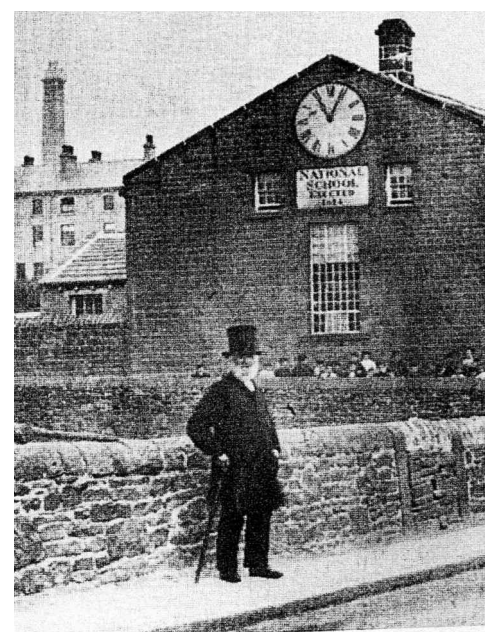
But then everything changed because there was no special place in Bingley for people to listen to music, to learn about all sorts of things and to have something called a Reading Room. Wilsden, Cottingley and Baildon already had something called a Mechanics Institute where people even had



classes after work in an evening. So everyone was asked to give some money so a lovely building could be built on the Main Street of Bingley for all those things. It had to look very important so, like a Town Hall it should have a big clock on the front they said. Who could be found to make the clock?

There was a very clever man called Jonathan Cryer from Cononley and when he was fifteen he was working in his family's mill helping to make the machines work. He came to live in Bingley in Ireland Street across the river from the church and worked in a mill opposite the White Horse Inn. He was an engineer so he was asked to make a big clock. The problem was, it was going to be very special because it would use water to make it work and two other clocks inside. He did not quite finish the job at first and that made everyone laugh at a clock that only ever said a quarter to one.

When the National School clock heard about a new clock in town he was very sad and thought he would never be wound up again. So he wrote to the Keighley News newspaper. He said he thought he would lose all his friends who came to see him but perhaps they were still coming because he had been given a new coat of paint and his numbers made to look better. When he asked a friend why people were not looking at the new Mechanics Institute clock he had a strange reply. "The clock was like a man who had popt his Sunday clothes and lost his ticket so had to stop at home to worship." It



really meant the clock was not working nearly two years after it was put in the building. The pipes from the water tank were not fixed and Jonathan was still puzzling how to finish the job. The National clock said why doesn't he just hang two big watches on the hands?

Finally Jonathan had his clocks working with a very special finish. On Tuesday 5th May in 1868 the big clock was showing the right time, was lit up for the first time in the evening and would be every evening until 10 o'clock. The fairy story has two endings, one happy, one very sad. The Mechanics clock was happy to work but, one year later, a terrible explosion in the mill next to the National killed children playing in the school playground and the clock probably stopped. Will it work again?

Get your entries ready for
The Eldwick Art Show

Eldwick Memorial Hall
13 - 14th October

*Entry forms will be available
from Eldwick Post Office
from late September.*

PETER MARRIOTT PROPERTY SERVICES

Painting & Decorating and other types of work undertaken incl.
Wall tiling, Fencing, Pointing etc. etc.
No job too small
Free estimates & advice.
For a friendly, reliable and professional service

07985 050543
01274 510969

INTERIOR PAINTING AND DECORATING Also



PICTURE FRAMING

by *Chris Bettles*

21 Mansfield Avenue, Eldwick

Tel: 01274 510252
Mob: 07941 364274



BOND GARDEN SERVICES

SIMON BOND

ELDWICK
BINGLEY

01274 567439
07790 415593
janbond1956@gmail.com

HEDGES TRIMMED
MOWING & TURFING
TREES FELLED/PRUNED
FENCING/PLANTING