

Eldwick Newsletter

Village Society

Issue No. 461 April 2017

Gala 2017

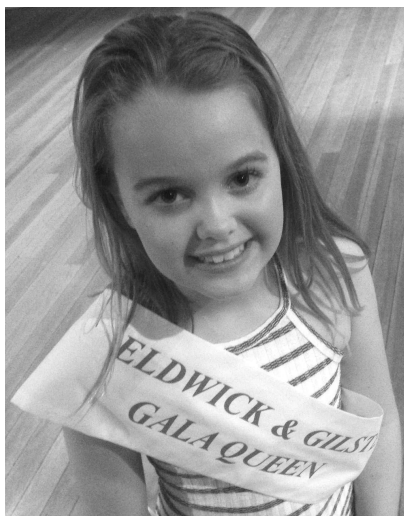
Congratulations to the 2017 Eldwick & Gilstead Gala Queen Leah Oates and her deputy Charlotte and her attendants Mia, Erin, Emily & Alexa.

We look forward to seeing them on Gala Day leading the procession with the New Orleans Jazz Band from Eldwick Primary school to Eldwick Recreation Ground on Gala Day 24th June,

The theme for the procession is "Jolly Holidays!" to enter a decorated float please contact gala@eldwickvillage.co.uk and we will send you some information.

The latest news about Gala Day - we will be entertained by the Mellin Family and their sheep dogs and ducks, we have just heard that the RAF have allocated us a flypast by the BBMF Lancaster.

To book a stall on Gala Day, place an advert in the Gala Programme or volunteer to help on the day please send an email to gala@eldwickvillage.co.uk



Leah Oates
2017 Gala Queen



Back row l-r: Mia Bass, Erin Finnett, Leah Oates (Gala Queen), Charlotte Kelley (deputy)
Front row l-r: Emily Chilvers-Maude, Alexa Hey

DATES FOR YOUR DIARY

GALA DAY
SAT 24th JUNE

*

SUMMER DISCO

Friday 16th June
Junior Disco
6 - 6.45pm
for 3 - 7 year olds
Gala Disco
7 - 8.30pm
for 7 - 11 year olds

PET SHOW

Monday 19th June
With classes for Dogs
& Small Pets from 6pm

*

FUN RUN

Friday 23rd June
Scout & Guide Fun
Run
1.5 miles 7pm
3 Mile Run 7.30pm

Bingley Town Council
ANNUAL TOWN
MEETING

Thurs 27th April
6.30pm to 8pm
Morningside Methodist
Church Hall, Herbert St,
Bingley BD16 4NU

*

Bingley's Five Rise
Beer Festival

Bingley Arts Centre
Friday & Saturday
2 & 3 June 2017

The Eldwick Church invite you to a
Bread & Cheese Lunch
in support of CHRISTIAN AID
Saturday 21st May
12noon -2pm
In the Church Hall
Stalls to include Homemade Cakes
& Produce
Books... Plants... Tombola

The Eldwick Church invites you to a
Festival of Flowers
on Saturday 3rd June 10am - 4pm
Sunday 4th June, 12 noon -4pm
There will be Stalls and refreshments
in the church hall. All monies raised will
go towards the Church building fund.
If any local businesses would like to
sponsor the festival, please contact
Jenny Dunn, 01274 569740

Building Project News from The Eldwick Church

We are making good progress with both our plans and our fundraising efforts. We have now sent out the Invitation to Tender document to building companies which is a major milestone along our path. Should our fundraising be successful, this would allow us to award building contracts with the expectation of starting work in late Summer this year. If it takes longer to raise the funds, then the start date would be delayed.

The latest in a series of local fund-raising efforts is a 22 mile church route walking challenge by 2 senior ladies from our congregation: Anne Wyborn & Margaret Wadsworth. Anne and Margaret are (mostly) following the Dales-way from Kettlewell Church to All Saints' Church in Ilkley. Their support team will photograph the ladies either at or passing 8 churches en route. The walk will take place in April and if you would like to sponsor them with a donation, cheques can be made out to 'The Eldwick Church' and sent to our Treasurer, Sharron Arnold, 42 Effingham Road, Harden, BD16 1LQ, who can also provide a Gift Aid form if required.



Watch out for news about the village Toy Trail during the school summer holidays in aid of the church building fund. Maps will be available from June onwards.

Paul Rae C.A.R.P.E.T.S
Est. 1983

I'll bring sample to you!
Please call Paul on 07778 568845
Over 30 years experience & friendly advice

BIRCHES

8am - 1pm Monday to Friday
Breakfasts, hot and cold sandwiches,
tea, good coffee and cakes.
Eat in and take out.

Orders 01274 561265.

NOW DOING TRADITIONAL PUB LUNCHES
Monday to Friday 12-2pm

ELDWICK & GILSTEAD HORTICULTURAL SOCIETY

TALK BRINGS BEES TO LIFE

Our speaker David Wadsworth spoke so well and amusingly about dry stone walling in January that we simply had to have him back two months later to tell us about his other hobby: beekeeping. He began by outlining the rigid society that exists in the beehive, where drones, workers and females all have their roles, each one dedicated to increasing the population and the survival of the colony.

He went on to give us a potted guide to beekeeping - from finding your bees to getting them home, housing them, collecting honey and using their produce. He included a detailed look at the history of bees and beekeeping and pointed out that whether you have a tiny balcony or acres of land, live in the middle of a city or in the countryside surrounded by flowers, you can still pursue - and even profit from - this fascinating hobby.

David stressed that before embarking on your new hobby it was important to fully understand your bees so that you know how to keep them happy. Before bees were "domesticated" they lived in the wild, making

their homes in hollow trees and man had to emulate these conditions when designing hives for them to inhabit. Monks were early pioneers, keeping bees in dome-shaped straw baskets for their wax, which was used for candles. Later they learned how to convert fermented honey production into mead and this became another source of income for some monasteries.

A colony usually numbers around sixty to seventy thousand bees. When the population becomes too great, the bees swarm and start a new colony. The queen has already been selected from a small number of larvae incubated in special "queen cups" within the hive. The first one to hatch immediately slaughters the other contenders. The new queen makes a mating flight during which she will mate up to a dozen times, with fatal consequences for the "lucky" males of her choice. Male bees do no work other than that. What a way to go!

The queen goes on to lay eggs - as many as 800-1,000 per hour - and fertilizes them for up to three years. Meanwhile, life in the colony continues. The females fly out to collect pollen

and nectar, bringing the pollen back in "baskets" on their back legs. Bees secrete ambrosia, "royal jelly" which they feed to the very young larvae.

Today bees are threatened by the varroa mite which attaches to the body of the bee and weakens the bee by sucking out the haemolymph. A significant mite infestation will lead to the death of a honey bee colony.

Another enemy is the Asian Giant Hornet, which feeds primarily on larger insects and honey from honey bee colonies. It is now designated a notifiable killer and must be reported if seen in this country.

On a more cheerful note, the Society stages its Spring Fair and Children's Show on Saturday 29 April from 10.00 a.m. to 12 noon in the Memorial Hall. So come and see the children's paintings, models, poems and photographs. There will also be plants and produce for sale, a raffle and coffee and biscuits, with the prize presentation at 11.45a.m. Entry forms from Eldwick and Gilstead Post Offices and Bingley Library.

Mike Hitchen

COUNCIL NEWS

Bingley Town Council have appointed Laura Jowett as Administrative Officer to support the Town Clerk, Laura joins us on a part time basis working 3 days a week. At our last council meeting we were joined by Marcia Churley, Shipley Area Ward Officer along with Andy Alderson, Warden for Bingley. They gave an overview of their roles covering:- Community engagement, Working with Partners, Supporting Service Delivery, Working with the Police, Facilitating Ward Officer Tasking meetings that have members of the Police, Highways, Incommunities, etc. attending to discuss ward issues and find a joint decision to dealing with matters of concern.

A major issue is SCHOOL PARKING - it is a major issue across the whole of the Bradford District. Bradford Council have a camera car that takes pictures of offending vehicles and issues tickets for parking offences. Don't get caught - park sensibly and walk to school.

The Bingley Warden, Andy, has many duties to undertake within the community, Parking Enforcement, Environmental complaints and neighbourhood disputes,

Abandoned Vehicles, two days a week works with the probation services, works some evenings and weekend on a rolling shift basis.

The Council are this year funding floral displays in Bingley with planters fixed to the lamp posts along the Main Street from the Fire Station to the corner of Ferncliffe Road, with some planters on Wellington Street and Chapel Lane, so it will brighten up Bingley this summer, something which has long been overdue.

Litter picks have been ongoing and very successful. In early March we had a litter pick in the morning at Cottingley and one in the afternoon behind Bingley Cemetery down to Keighley Road, overall a very successful day - over 100 bags of litter were collected.

If you know of any areas in and around Eldwick which need to be litter picked please let us know so we can arrange accordingly. Volunteers are most welcome, many hands make light work.

Bingley Town Council are working with the Chamber of Trade and Commerce to organise jointly events in the Town Square, a much underused area. One such event is the Easter Event, which will have taken place by the time you read this newsletter. However please put a note in your diary as we are

looking to arrange a summer event August Bank Holiday weekend and also the Christmas Light switch on in late November. Watch this space for further updates

Bingley Council are looking at ways to regenerate the use of the Town Square. We are in the early stages of discussions with Bradford to see if the Bingley Town Council can take over and manage the Town Square.

The quest to retain Milner Field as a working farm continues, objections can be submitted up to the 17th April before going to final planning on the 15th May.

We have been contacted by the Royal British Legion to seek our support for the Remembrance Day parade in Bingley. Unfortunately the organisation committee is dwindling in numbers but we are to meet with them to see what support we can give on this special day, in remembering those who gave their lives for us. If anyone wishes to offer help to the British Legion, please get in touch with me and I can give you their details.

Trust you all had a very Happy Easter.

All the best from your Eldwick Councillors
Mark Truelove



formerly known as
Simply Bathrooms

For more information or to discuss
your project call:

01274 566100

Unit 1A Leonards Place, Leonard Street
Bingley, West Yorkshire BD16 1DP

www.simplybathroomsbingley.co.uk

Andrew Tracey Plumbing and Heating Services (Eldwick)

- Central Heating Systems
- Boiler Exchanges
- Bathroom Installations
- Tiling
- General Plumbing

Tel: 01274 560458/07799536605



**JCH
Electrical Services Ltd**

Professionally covering all aspects of
domestic Electrical & Security work

Over 30 years experience
City & Guilds trained

**Tel: 01274 511433 (Eldwick)
Mobile: 07788 418050**

WILKINSON & WHITLEY LTD.

ALL MODEL SERVICING MOT TESTING

TYRES

BRAKES

EXHAUSTS

AIR CON. REPAIRS

LIME STREET, BINGLEY

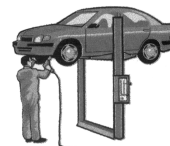
BATTERIES

WELDING

ALL MAKES

SERVICE LIGHT RESET

01274 562787



SIMPSON'S ELECTRICAL SERVICES

(ELDWICK)

HOUSEHOLD INSTALLATION AND
MAINTENANCE WITH A PROFESSIONAL
FRIENDLY COMPANY

TEL: 01274 563794

FOR FREE ESTIMATES

WHERE SERVICE COUNTS

CITY & GUILDS

I.T.B. & P.E.R.A. CERTIFICATED

Yorkshire Countrywomen's Association

We had our Annual Party on Tuesday 14 March 2017. This was attended by 46 Members. We had a very nice meal and a quiz. Thank you to the caterers. Our Entertainment was a rendition of old fashioned and humorous songs and stories through the years from about 1833 to after the second world war. They were performed by Mr John Wallis and the audience participated as well. It was a very enjoyable evening.

Our next meeting is on 9 May 2017. This will be our A.G.M. We hope you will all attend and if you feel you would like to join the Committee, please put your name forward. Our speaker is Pam Viddecombe.

New members are always welcome. Please contact Bev on 01274 565077

Dear Editor

The two photos on the backpage of the March Newsletter are not village teams. They are teams representing Bingley Modern School (Beckfoot). They were taken in the early fifties. The gentleman in the suit is Mr. Sanderson the school principal. The man in the striped jacket is Mr White, the sports teacher. Saying that, the photos do include at least a couple of Eldwick lads - David Holmes and Peter Smiddy.

Hope you find this information of interest.

Len Butterfield

YORKSHIRE CANCER RESEARCH NEW TO YOU FASHION SHOW

Ladies Clothing & Accessories

Friday 5th May 2017

Entrance £2.00

Donations of good as new clothing & accessories much appreciated.

For further information

Contact

Marjorie Hodgson 01274 564326 or

Norma 01274 565033

Tec2k

Computer Problems Resolved Local to Eldwick

Repairs and upgrades to Laptop & desktop computers

Resolve problems with broadband or WiFi
Home appointments no problem
Anything to do with electronics
please call for advice

Tel Stuart on 07958-994951

**Visit our Web Site for full details
www.Tec2k.co.uk**



Indian & Kashmiri Cuisine
Open 7 days from 5pm - 11pm
Early booking essential

Clarke House, Keighley Road
Bingley BD16 2RD
Telephone 01274 563 777
www.shamabingley.co.uk
Email: info@shamabingley.co.uk

✠ THE ELDWICK CHURCH ✠

MESSY CHURCH

Saturday 22nd April 4.00 - 5.45 pm

Saturday 20th May 4.00 - 5.45 pm

Messy Church is a worshipping community of all ages, it is for all the family. It will be held in the church hall and the church. There will be craft activities as you arrive in the church hall, stories from the Bible, songs and prayers in the church - rounding off with sharing a simple meal together in the church hall. This is an event for all the family - whatever your age, why not come and join in the fun!

TODDLER PLAY

For under 3's and their carers: play, craft activity, a chat and a drink.

Wednesday 12th April 9.30 - 10.30 am

PAUSE TO PRAY

Wednesday 19th April 2.00 - 3.00 pm

Wednesday 3rd May 2.00 - 3.00 pm

Wednesday 17th May 2.00 - 3.00 pm

THE ELDWICK CHURCH FELLOWSHIP

Thursday 13th April Maundy Thursday

Thursday 18th May Alan Bonson (JAK)

"It shouldn't happen to a Coach Operator"

SERVICES

2nd April

09.15 am Holy Communion led by Rev Barbara Walls.

10.30 am Family Worship led by Rev Peter Mayo-Smith
Baptism.

9th April Palm Sunday

10.30 am Holy Communion led by Rev. Peter Mayo-Smith.

13th April

7.30 pm Maundy Thursday

14th April Good Friday

10.00 am Prayers led by Rev. Peter Mayo-Smith.

10.45 am Walk of Witness

2.00-3.00pm Church open for reflection.

16th April Easter Day

07.00 am Holy Communion on Baildon Moor led by Rev. Peter Mayo-Smith.

08.00 am Breakfast.

10.30 am Holy Communion led by Rev. Peter Mayo-Smith.

Private Tuition

(Qualified Primary School Teacher)

Help your child reach their full potential in a positive and encouraging environment.
From pre-school onwards

- Getting ready for primary school
- Ongoing support in numeracy, literacy & science
- GCSE Maths
- School entrance exams

First session free

Cathy Levis

01274 568602 (Gilstead)

Childminding Vacancies Available

Telephone Cathy Levis on

01274 568602 / 07585 449275

Most recent Ofsted inspection "This provision is strong ... children enjoy their time with the childminder ... children are well cared for in a warm welcoming environment ... the childminder is highly skilled".

23rd April

10.30 am Holy Communion led by Rev Marcus Pattern.
The Annual Church Meeting will follow this service.

30th April

10.30 am Mission and Outreach Service about the Alzheimer's Society. Baptism.

12.30pm

7th May

09.15 am Holy Communion led by Rev Rosemary Nash.

10.30 am Family Worship led by Rev Peter Mayo-Smith

14th May

10.30 am Holy Communion led by Rev. Peter Mayo-Smith.

21st May

09.15 am Holy Communion led by Rev. Peter Mayo-Smith.

10.30 am Morning Worship led by Rev Terence W Porter.

28th May

09.15 am Big Breakfast.

10.30 am Family Communion led by Rev. Alan Raine.

REGULAR WEEKLY EVENTS

Tuesday - 09.30-12.00 Church Café

Wednesday - 09.30 - 12.00 Embroiderers / Probus,

13.30 - 15.30 Craft Group

Friday - 19.15 - 21.15 Elstead Ladies Choir

Pre School Group - 08.45 - 15.15

Monday, Tuesday, Thursday and Friday.

REGULAR MONTHLY EVENTS

1st Friday in the month Friday Footsteps.

3rd Thursday in the month The Eldwick Fellowship.

Mid Saturday Messy Church.

Pause to Pray 1st and 3rd Wednesday.

CHURCH HALL BOOKINGS:-

Contact Ann Shoebridge 564690

COFFEE CAKE CHAT

Every Tuesday 9.30 am - 12 noon

The Eldwick Church

Fresh Fairtrade Coffee & Tea -

Home made cakes

First Tuesday Of The Month we have a

Craft & Book Stalls in The Cafe



We deliver fresh, gift-wrapped flowers locally, 7 days a week with prices starting at £25.00+ delivery.

Beautiful Wedding Flowers

Funeral & Sympathy Flowers

Special Occasions Gift Wrapped Plants

Tel: 01274 563750



Flowers by Eldwick Post Office

TRAMPING ON ROMBALDS

As the proposed Eldwick Beck Conservation Area makes slow progress through administrative channels, it is encouraging to learn that additional proposals from the local public have been readily accepted.

As well as focusing on Eldwick Beck, comments were invited as to how the hinterland is such an attractive landscape which draws visitors from far and wide. Comments like, rural tranquility, wide open moorland, and an abundance of footpaths and bridleways, were forthcoming.

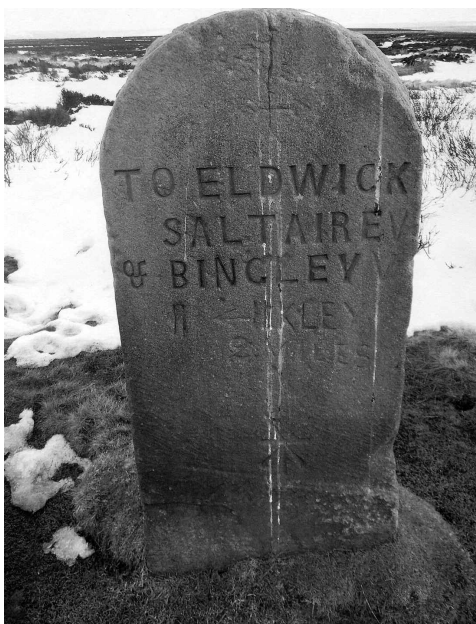
For well over a century, crossing Rombalds Moor from Airedale into Wharfedale has become a leisure pursuit rather than a vital link for trade and industry. It was said that the advent of the motor car became a nuisance to pedestrians using country roads but at least there was one place unmolested and still a sacred hunting ground for the 'happy tramps'. This referred to ramblers who crossed Rombalds from Eldwick to Ilkley to enjoy the wild romantic beauty of the rugged moorland.

Families would even set out with donkeys to carry their children, first in panniers, then astride the animal, until able to walk the whole way. If there was only one donkey the children would have to take turns in the saddle.

Various routes could be taken, one being from the former Gaping Goose inn, along a wall side via Burley Woodhead. The beautiful converted building on the roadside today, just before the junction down to Hawksworth, was once not just a lonely moorland farmstead but an isolated inn with a lively reputation. The rendezvous for travellers, traders, poachers, fighters and gamblers, saw its heyday during the construction of the moorland reservoirs with crowds of navvies as regular customers.

Reaching Burley Woodhead, there was a chance of seeing Job Senior, the Rombalds Moor Hermit. His 'hermit's hole' was little better than a hovel in the hillside, patched up with turf and heather.

By far the most popular crossing of Rombalds has always been from 'Dick's' to Ilkley. Way back in the 1860's, the track was an indifferent one, particularly in winter months. Neither the local authorities nor landowners offered to keep it in good repair so private enterprise had to step in. Men stood with collecting boxes as if in church and these were shaken in the faces of pedestrians every Sunday at both the Eldwick and Ilkley ends of the route. This was continued until the costs, of ditching the roadway on both sides and patching it up into a solid roadway, were defrayed. A leader of this enterprise was one Old Joe Dickinson from Bingley who knew the



moor better than anyone. A popular 'tramper', he was also an excellent cook with skills he even practised on Rombalds. In a secret corner, far from the beaten track, he kept a set of cooking utensils etc, the etc being a black bottle of his favourite brew. For the favoured few he would cook inch thick ham steaks from a home-fed ham, cooked in red-hot embers fired in a pit cut out of solid peat.

In 1909 comment was made that the gable on the new building at Eldwick had painted in big bold letters 'DICK HUDSON'S', as if everyone needed to be reminded of the background to the family running The Fleece Inn.

A third route across the moor comes from Baildon up Sconce Lane by way of Faweather, Little London and Old Wood, to reach the main moorland highway from Keighley to Otley. In past times this was a pack-horse route with Little London being a kind of trading centre from all directions and stone tablets still remain in part of the lane.

Emerging onto the highway west of the Gaping Goose, the walker crosses straight over to the track which leads to Horncliffe. Again, a century ago, the rough one storey cottage and its small enclosures reclaimed from moorland was still standing, whereas today only faint traces remain. The vital spring still bubbles with crystal clear water which enabled this homestead to exist. Could anything short of madness have established a day school in such a wilderness? Yet the stories were told of how Joshua Briggs kept a school here two hundred years ago, even though scholars were scarce and payment in

fees was small. Perhaps it was the reason why Joshua the teacher and preacher was compelled to combine his teaching with skills in besom-making. He used his pupils to scour the moor for the heather he would use to construct sturdy brooms which he would then sell in Baildon. Most of his teaching was also done in the open and he opened Sunday schools in Baildon, serving the community until 1827 when he died. In his time at Horncliffe there were far more dwellings all along the road from 'Dick Hudson's', peopled by farm workers, weavers and quarrymen so there would have been more prospective pupils, miles from any other schools in the area.

The other popular custom of walking the bounds has now died out but at one time all local boundaries led to Ashlar Chair in the centre of the moor and it was there that different groups from Bingley, Baildon, Burley, etc, would meet during their circumnavigation. Even today the large scale Ordnance Survey maps will show that there are lots of routes to take to enjoy the beauties of Rombalds Moor. **ALLAN MIRFIELD**



**Eldwick & Gilstead
Horticultural Society**

**2017 Spring Fair
& Children's Show**

**Saturday 29th April
10.00 a.m. - 12 noon
In the Memorial Hall**

**Prize presentation
11.45 a.m.**

**Sale of plants, produce,
raffle, coffee and biscuits**

**ENTRY FORMS AT BINGLEY LIBRARY,
ELDWICK AND GILSTEAD POST OFFICES**

For all your Angerie, Nightwear & Swimwear
Amour de Femme Lingerie

*Fantasie,
Fraya
Charnos, Lapel,
Panach,
Masquade,
Curvy Kate
& Many More*



**87 Main Street
Bingley**

01274 921 371

*80% of women wear the wrong sized bra
Don't be one of them. Free fitting service. Just call in*

PETER MARRIOTT PROPERTY SERVICES

Painting & Decorating and other types of work undertaken incl.
Wall tiling, Fencing, Pointing etc. etc.
No job too small
Free estimates & advice.
For a friendly, reliable and professional service

**07985 050543
01274 510969**

BOND GARDEN SERVICES

SIMON BOND

ELDWICK
BINGLEY

01274 567439
07790 415593

jan@janbond.wanadoo.co.uk

**HEDGES TRIMMED
MOWING & TURFING
TREES FELLED/PRUNED
FENCING/PLANTING**

INTERIOR PAINTING AND DECORATING
Also



PICTURE FRAMING

by *Chris Bettles*

21 Mansfield Avenue, Eldwick

Tel: 01274 510252
Mob: 07941 364274

