

Eldwick Newsletter

Village Society

Issue No. 438 May 2015

2015 Eldwick and Gilstead Gala

Eldwick Gala Pet Show

Monday 22nd June

ELDWICK MEMORIAL HALL

Entries to be taken from 5.45pm

Judging from 6.15pm

Entries 50p per class.

GALA DAY
SATURDAY 27th JUNE
Theme "Magna Carta"
1215 – 800th Anniversary year

THANK YOU FOR YOUR SUPPORT

The Gala raises over £2000 each year for distribution to local children's organisations and charities.

EVENTS ON THE DAY

Parade from Gilstead at 12.45pm for decorated floats.

Opening Ceremony 1.30pm on the Gala Field, Eldwick Recreation Ground
Stalls, Games & Attractions, Flypast by a BBMF Spitfire plus Escapologist, Terrier Racing, Fell Race, Jazz Band, Circus Skills, Childrens Races, Burnt Bangers & Afternoon Tea and lots more



TERRIER RACING COMES TO ELDWICK GALA
Have you got the fastest terrier in the district?

Then bring them along to Eldwick Gala on Saturday 27th June and enter them in the terrier racing for some fast and furious fun. The races will be run in heats ending with the final, followed by an open dog race with rosettes

Escapologist – info to follow

GALA CONTACT INFO

to enter a float in the parade, have stall on the field, advertise in the Gala Programme
please contact
gala@eldwickvillage.co.uk

FELL RACE organised by Bingley Harriers

www.bingleyharriers.co.uk

Starts at 3.15pm 3 Miles 550 feet of climb

Age Groups : Seniors, U14 and U16

Junior Race (u14s) start at 3.25pm

1 mile approx. 100 feet of climb

fully marked and marshalled

Age Groups : U10, U12, U14

START / FINISH: Eldwick Gala Field

ENTRY FEE: £2.50 Senior Race,

£1 Junior Race.

Entry on the day, just turn up and run.

EVENTS BEFORE THE DAY

DISCOS - Friday June 19th

with Andy and Partymania

6 - 6.45pm for 3 to 7 years olds

7 - 8.30pm for 7 to 11 year olds

in Eldwick Memorial Hall

entry £2

SCOUT & GUIDE FUN RUN

Friday 26th June

1.5 mile start 7pm

3 mile start approx 7.30pm

a medal for every runner,

Entries £2 before the day, £3 on the night.

Entry form enclosed

YOU CAN HELP TO MAKE IT ALL HAPPEN

- can you help on Gala Day ??
with Stewarding for the Parade and on the Entry Gate

If you are over 18 and would be able to

offer some of your time on

Saturday 27th June from 12.15pm

please get in touch with

gala@eldwickvillage.co.uk

because

to conform to legal and road closure requirements we need many volunteer marshals just around the time of the parade - please get in touch if you can help out.

DOG SECTION

- 1 Prettiest Eyes
 - 2 Waggiest Tail
 - 3 Prettiest Bitch
 - 4 Handsome Dog
 - 5 Best Six Legs
 - 6 Best Pup under 12 months
 - 7 Best veteran over 9 years
 - 8 Dog the Judge would most like to take home
 - 9 Basic Dog Handling – all age Trophy (to be held for 1 year) -
- Best prize 1st prize winner from classes 1-7 inc.

SMALL PET SECTION

- 1 Best Gerbil or Mouse
 - 2 Best Hamster
 - 3 Best baby Rabbit under 5 months
 - 4 Best Guinea Pig, smooth coated
 - 5 Best Guinea Pig, long coated
 - 6 Best Buck Rabbit
 - 7 Best Doe Rabbit
 - 8 Any other Pet
 - 9 Pet the Judge would like to take home.
- Trophy (to be held for 1 year) -
- Best prize 1st prize winner from classes 1-8 inc.

Eldwick Beer and Banger Festival 21st/22nd August

We still have a few "sponsorships" available. Although they are going quickly. You may sponsor personally or as a business. The cost is £100 which includes four event tickets for both days, four complimentary pints, four event glasses and their names, logos etc on one of the casks. Businesses will also get advertising in the Newsletter and the tasting notes. For further details please email eldwickbeerfestival2@gmail.com

Prince of Wales Park 150th Jubilee
on Sat 6th June from 1.30 onwards.
Many stalls, refreshments etc

Contact us:

Newsdesk:

news@eldwickvillage.co.uk

Village info:

info@eldwickvillage.co.uk

Website:

www.eldwickvillage.co.uk

BIRCHES FREEHOUSE

NOW OPEN FROM 2pm SATURDAY & SUNDAY AT 12

Traditional hand pulled beers at reasonable prices. Sky Sports. Quiz nights on Thursdays

Pint now down by 10p (typically £3 per pint)

Paul Rae C.A.R.P.E.T.S
Est. 1983

I'll bring sample to you!

Please call Paul on 07778 568845

Over 30 years experience & friendly advice

ELDWICK & GILSTEAD HORTICULTURAL SOCIETY

Great Gardens? You can trust the Trust!

Last month, veteran National Trust volunteer Trevor Moody came to talk about the organisation's gardens and their place in history. Employing a splendid selection of colour slides, he took us back 400 years to Little Moreton Hall, a moated house begun around 1504, and featuring a manicured knot garden at the back of the hall. Today you'll also find herbs and vegetables that the Tudors would have used for their cooking and medicines.

Moving swiftly on to post-1688, the time of William of Orange, Trevor showed us Westbury Court Garden, in Gloucestershire, one of the only surviving 17th-century Dutch water gardens in the UK. Here you can step back in time to a place of elegance and calm, with straight canals reflecting the sky, clipped hedges, ornate garden buildings and old-fashioned orchards.

Next we moved to the Midlands to see slides of the garden at Packwood House, where the gardens have renowned herbaceous borders and a famous collection of beautifully sculptured yew trees.

Then on to Wales and medieval Powis Castle rising dramatically above celebrated garden overhung with clipped yews, shelters rare and tender plants. Next we were in the Welsh Marches at Chirk Castle, where a dedicated team of three full-time gardeners and eight volunteers maintain a garden in the Italian and French styles, with its original lead statues and an orangery on the terraces. The original William Emes landscape and spectacular curved border have been retained over the past 400 years.

A leap in time took us in rapid succession to Stowe House with its octagon lake, Beningborough Hall near York, Cragside and its to-die-for rock garden, Sissinghurst, and Knightshayes Court, where the restored kitchen garden provides organic produce all year round.

Time flew by and suddenly we were back in the 21st century with just sufficient

time remaining for Trevor to give us details of National Trust membership, its 72,000 volunteers, and to promise to donate his speaker fee to the Trust, with a preference for it to go to our own East Riddlesden Hall.

SPRING FAIR WINNERS

On the last Saturday in April we were in the Memorial Hall at 8.00 a.m. to set up tables and take entries for the Children's Show, which opened at 10.00 a.m. In spite of the showery morning, parents and grandparents turned out to inspect the children's imaginative displays of exotic veg animals, miniature gardens, poems, paintings and photographs. There were also plants, produce, home baking and books to buy, plus a prize raffle and refreshments.

The winners in each children's class were:

Class 1 – Cupcakes 5-8 yrs: Trixie Franz

Class 2 – Cupcakes 9-13 yrs:

Jessica Milnes

Class 3 – Miniature Gardens 5-8 yrs:

Robbie Temple

Class 4 – Gardens 9-13 yrs: Ruby Franz

Class 5 – Animal 5-8 yrs: Trixie Franz

Class 6 – Animal 9-13 yrs: Ruby Franz

Class 7 – No entries

Class 8 – Photograph 9-13 yrs:

Jessica Milnes

The Raby Trophy for the child with most points was awarded to Trixie Franz.

For your diary: we look forward to a very topical speaker meeting on Tuesday 19th May at 7.30 p.m. in the Memorial Hall by the ever popular David Allison, who is making a return visit to Eldwick when he will reveal the intriguing secrets of creating beautiful hanging baskets.

Mike Hitchen



Raby Trophy winner Trixie Franz collects her prize from the society president, Mrs Jane Hitchen.



Some of the creative entries from Year 5 at Eldwick School.

Yorkshire Countrywomen's Association

The speaker at the meeting on Tuesday 14th April was Dave Jones. He is a Defibrillation Officer, and gave a very interesting talk on the "Ambulance Services" and also showed the members how to use the Defibrillator which is in a cabinet outside The Birches. Members were also shown Life Saving Techniques.

It has been decided that our Outing on 12 August will be to Hawes Creamery. We are booked in and afterwards a trip to Leyburn and Masham. A carvery is booked at Millstones. Price £30. More details to follow.

Next Meeting 9th June 2015, Speaker Reg La Pla will be giving a talk on "The singing bone".

New Members are always welcome.

SIMPSON'S ELECTRICAL SERVICES

(ELDWICK)

HOUSEHOLD INSTALLATION AND
MAINTENANCE WITH A PROFESSIONAL
FRIENDLY COMPANY

TEL: 01274 563794

FOR FREE ESTIMATES
WHERE SERVICE COUNTS
CITY & GUILDS
I.T.B. & P.E.R.A. CERTIFICATED



Indian & Kashmiri Cuisine
Open 7 days from 5pm - 11pm
Early booking essential

Clarke House, Keighley Road
Bingley BD16 2RD
Telephone 01274 563 777
www.shamabingley.co.uk
Email: info@shamabingley.co.uk

JEFF MAWSON

BUILDING CONTRACTOR

EXTENSIONS AND ROOFING
PROPERTY REPAIRS

07966 199994 01274 597194

Tec2k Computer Problems Resolved Local to Eldwick

Repairs and upgrades to Laptop & desktop
computers

Resolve problems with broadband or WiFi
Home appointments no problem
Anything to do with electronics
please call for advice

Tel Stuart on 07958-994951
Visit our Web Site for full details
www.Tec2k.co.uk



JCH

Electrical Services Ltd

Professionally covering all aspects of
domestic Electrical & Security work

Over 25 years experience

City & Guilds trained

Tel: 01274 511433 (Eldwick)

Mobile: 07788 418050

Savagery in Sheriff Lane

Dear Eldwick Newsletter

As a resident of Eldwick for some 36 years I am writing on behalf of many people in this area who get great pleasure and enjoyment in walking down Sheriff Lane and relishing the beauty and sense of peace and quiet that walking there gives to us all.

We were appalled to see the savage cutting back of most of the trees and bushes recently. A very rare species of an old English crab apple tree was hacked down with no thought of its value to wildlife - bees and other insects and birds, particularly wrens which often nested in that tree and gave great pleasure with their song as people passed by. It was growing on the corner of Sheriff Lane where Lode Pit Lane leads off to the left. This is such a great loss and it will take decades to grow to its former glory. Now there is no cover for many birds which made their nests in the other trees and bushes which were hacked down in Sheriff Lane. Now there will be fewer elderberry flowers for the bees and other insects to feed from and certainly no flowers for people to enjoy looking at. The whole lane going as far as Broadstones Caravan Park is an ugly mess.

Already Sheriff Lane has become a dumping ground and much litter has been thrown down near Woodlands Road.

Apparently the person who hacked all the trees back said, as it was an unadopted road, he had a right to do what he wanted in the lane. Well, he has done just that with never a thought for all the other people who loved the trees and bushes being filled with wildlife and bird song. According to Mark Scrimshaw, Environmental Warden, any section of unadopted rights of way is generally owned by the adjacent landowner and permission to cut trees and bushes back must be sought from the relevant owner. In all but one case this was not done.

If the trees had to be cut back then it should have been carried out in a sensitive manner - not just hacking back all the spring growth.

Now, every time I walk down Sheriff Lane, I, along with many other people in this area, am saddened at the savage destruction of the trees and bushes. English country lanes are a disappearing part of our heritage, held in affectionate regard by people for a very long time. They are unique areas of peace and beauty and as such should be cherished. We had a really lovely English lane on our doorstep - but not anymore. Treat country lanes with disrespect, then what can we expect in the future - bleak environments - the individuality and loveliness all gone.

Elizabeth Barrett, Eldwick

WILKINSON & WHITLEY LTD.

ALL MODEL SERVICING MOT TESTING

TYRES BATTERIES

BRAKES WELDING

EXHAUSTS ALL MAKES

AIR CON. REPAIRS SERVICE LIGHT RESET

LIME STREET, BINGLEY 01274 562787



† THE ELDWICK CHURCH †

MESSY CHURCH

Saturday 16th May 4.00 – 5.30 pm.

Saturday 20th June 4.00 – 5.30 pm.

Messy Church is a worshipping community of all ages, it is for all the family. It will be held in the church hall and the church. There will be craft activities as you arrive in the church hall, stories from the Bible, songs and prayers in the church – rounding off with sharing a simple meal together in the church hall. This is an event for all the family – whatever your age, why not come and join in the fun!

HAPPY HOUR FUN SIZE CHURCH –

for young families – All welcome

Wed. 27th May from 09.15 – 10.15 am.

Wed. 17th June from 09.15 – 10.15 am.

PAUSE TO PRAY:-

Wednesday 6th May 12.00 noon – 4.00 pm.

Thursday 28th May 7.00 – 7.30 pm.

Wednesday 3rd June 12.00 noon – 4.00 pm.

Wednesday 10th June 7.00 – 7.30 pm.

LADIES FELLOWSHIP:-

16th April 7.30 pm Mavis Dean “Words and Music”

21st May Steven Horne “The journey of a Games Maker”

18th June 7.30 pm Coffee Evening in aid of “The Children’s Society”

YOUTH CLUB:-

Sunday 10th May 7.00 – 9.00 pm.

Sunday 5th June 7.00 – 9.00 pm.

SERVICES:

3rd May

09.15 am Holy Communion led by

Rev. Rosemary Nash.

10.30 am All Sorts Family Praise led by

Rev Helen Hodgson.

10th May

10.30 am Holy Communion led by

Rev. Jennifer Lunn.

17th May

09.15 am Holy Communion led by

Rev Helen Hodgson.

10.30 am Morning Worship led by

Rev. Barbara Walls.

Private Tuition

(Qualified Primary School Teacher)

Help your child reach their full potential in a positive and encouraging environment. From pre-school onwards

- Getting ready for primary school
- Ongoing support in numeracy, literacy and science
- GCSE Maths
- School entrance exams

First session free

Cathy Levis

01274 568602 (Gilstead)

Childminding Vacancies Available

Telephone Cathy Levis on

01274 568602 / 07585 449275

Most recent Ofsted inspection “This provision is strong ... children enjoy their time with the childminder ... children are well cared for in a warm welcoming environment ... the childminder is highly skilled”.

24th May

09.15 am Big Breakfast

10.30 am Holy Communion led by
Rev Helen Hodgson.

31st May

10.30 am Morning Worship led by Mission and Outreach with speaker from CAP (Christians Against Poverty).

7th June

09.15 am Holy Communion led by
Rev. Ruth Crompton

10.30 am All Sorts Family Praise led by
Rev Helen Hodgson.

14th June

10.30 am Holy Communion led by
Rev. Helen Hodgson

21st June

09.15 am Holy Communion led by
Rev Helen Hodgson.

10.30 am Morning Worship led by
Rev. Alan Raine

28th June

09.15 am Big Breakfast

10.30 am Holy Communion led by
Rev Helen Hodgson.

REGULAR WEEKLY EVENTS

Monday - 09.30 – 11.15 Livewires,

Tuesday - 09.30-12.00 Church Café

Wed. - 09.30 – 12.00 Embroiderers / Probus,
13.30 – 15.30 Craft Group

18.00 – 20.00 Weight Watchers

Thursday -15.30 – 19.15 Dance Classes

Friday - 19.15 – 21.15 Elstead Ladies Choir

Pre School Group - 08.45 – 15.15 Tuesday,
Thursday and Friday.

REGULAR MONTHLY EVENTS

1st Friday in the month Friday Footsteps

3rd Saturday in the month Saturday Strollers

3rd Thursday in the month Ladies Fellowship

4th Wednesday in the month Happy Hour

Mid Saturday Messy Church

CHURCH HALL BOOKINGS:-

Contact Ann Shoebridge 564690

COFFEE CAKE CHAT

Every Tuesday 9.30 am – 12 noon

The Eldwick Church

Fresh Fairtrade Coffee & Tea –
Home made cakes



Property Services Ltd

Domestic & Commercial Work

For complete property management

Established Business, Professional,

Honest & Reliable Free Quotations

- Kitchens & Bathrooms
- UPVC Windows & Doors
- Soffits & Facias
- Plastering & Tiling
- Painting & Decorating
- Joinery & Building
- Electrical Work

Toni Fuller

M: 07791 856975 T: 01274 565036

E:toni.tmf@blueyonder.co.uk

ELDWICK'S SKYLINE PINNACLE IS NO MORE

Eldwick once had four major forms of employment – in the quarries, at the spinning mill, on the farms and at the brickworks. There were three tall chimneys. One stood beside the early 19th century spinning mill at Beck Bottom, another at the late 18th century Corn Mill at the end of The Green, beyond The Acorn, and the third at the late 19th century brickworks. The first two are long gone and were never prominent, being set in the hollow of Beck Bottom. However, the third had a dominant presence, notably from the Aire valley, but also from every direction.

For 170 years, the skyline, as it appears from the Aire valley and Bingley, looking east, has featured this single structure. The towering chimney of Barron's Brickworks, as it was commonly known for many years. The site, at the corner of Heights Lane and Walsh Lane, was bought by the family in 1870, having previously been in business as coal, stone, lime and hay merchants, using the Leeds – Liverpool Canal for transportation. In a new venture, following the quarry site revealing a type of clay for brick-making, a company was formed, The Bingley Brick & Tile Co. It produced bricks, tiles and chimney pots but the company was still paying royalties for the mineral rights to the landowner, George Lane Fox Esq of Bramham Hall. This changed in 1885 when William Barron purchased those mineral rights. Four years later the Barrons established the Bingley Sanitary Tube & Lime Company, as the manufacturing of drainpipes was added to the other products.

The lime element was to reduce

limestone, brought by canal from beyond Skipton, to be used to 'slake' – a process which causes the stone to be broken down and crumble by heating and mixing with water, so it could be spread on agricultural land. Lime was also used as an early form of mortar in building.

The company prospered on the large site with various types of kilns, sheds and a single dwelling for the head 'brick-burner'. Offices were in Bingley Main Street and the yard and wharf was off Park Road. Just like the tall brickworks chimney, which had its two diamond shapes in white glazed bricks on all four sides, the yard building also displayed those type of bricks. There was criticism in the local press that the company name had been spelt out in the glazed bricks on the building. At the time, most of Bingley consisted of stone buildings, bricks being used for inner walls, so why should such a prominent building contrast, with the local environment, with its white bricks?

Claremont in Park Road, Park House in Otley Road, Beck House in Micklethwaite, and an address in Bromley Road, were the various residences of members of the family, and had garden ornaments, like planters, made at the works. The company was liquidated in 1938 by John Barron of Morecambe and brother Robert of Crossflatts. During World War Two the site was requisitioned by the Army, probably as an ammunition store. Then, groups of conscientious objectors, those allowed to become 'outside workers', including William Douglas Home, were brought from Wakefield Prison for 'hard labour' at the Brick Pit. This meant breaking up empty ammunition boxes, aircraft spares boxes and packing cases, removing nails from the wood so it could be reused.

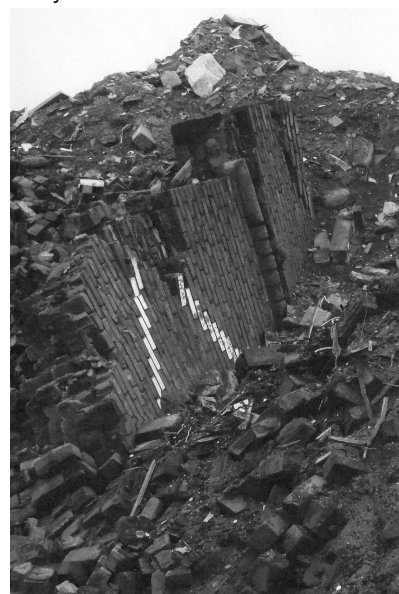
At some point the chimney had been reduced in height, hence there had been part of the higher diamond white bricks still visible above the lower ones. The last clay was extracted in 1946, the works became disused and the massive pit began to be filled, not with the usual materials, but old cars, vans, buses, lorries, even aircraft parts. Geologists pleaded for one face of the deep pit to be left exposed so all the strata dating back millions of years could still be on view. Sadly, with the works completely disused by 1956, the site just became 'a tip'. Walsh Lane Autospares arrived at 'The Hilltop Brickworks' with their glorified scrapyard, succeeded by JA & SR Locky, as Bingley Autospares. Part of the site has been nicely landscaped but a recent sale, 2.5 acres of the 14acre site, with a licence as a waste transfer site, to process up to 35,000 cubic metres of waste per year, has

still not cleared the collection of aged vehicles, littered round the site.

Apparently, a large crack had appeared up the full length of the chimney, so it was decided to bring it down, 'the Fred Dibnah way', propping then burning. The chimney came down in large pieces, so part of the turret and a diamond shape was still visible. There will, undoubtedly, be samples of BB&T Co or BBST&L Co bricks still around in gardens, under sheds and garages in



Eldwick and Bingley, as reminders of the chimney and the brickworks.



BOND GARDEN SERVICES

SIMON BOND HEDGES TRIMMED
MOWING & TURFING
ELDWICK TREES
BINGLEY FELLED/PRUNED
FENCING/PLANTING
01274 567439
07790 415593

For all your *Lingerie, Nightwear & Swimwear*
Amour de Femme Lingerie

Fantasia, Fraya, Charnos, Lapel, Panach, Masquerade, Curvy Kate & Many More
87 Main Street Bingley
01274 921 371

80% of women wear the wrong sized bra
Don't be one of them. Free fitting service. Just call in

Graham Sutcliffe t/a K Sutcliffe

Plumbing, Heating & Reg'd Gas Engineer
15 Heaton Drive, Eldwick, Bingley BD16 3DN

Phone: 01274 569328
Mobile: 07540 418811

No job too small

PETER MARRIOTT PROPERTY SERVICES

All types of work undertaken incl.
Painting & Decorating, Plumbing,
Tiling, Fencing, Pointing etc. etc.

No job too small
Free estimates & advice.
For a friendly, reliable and
professional service

07985 050543
01274 510969

Simply Bathrooms & Kitchens

The Biggest & Best
Kitchen and Bathroom showroom
in the Bingley area

For more information or to discuss your project call:

01274 566100

Unit 2 Leonards Place, Leonard Street,
Bingley, West Yorkshire BD16 1DP

www.simplybathroomsbingley.co.uk

INTERIOR PAINTING AND DECORATING



Also

PICTURE FRAMING

by *Chris Bettles*

21 Mansfield Avenue, Eldwick

Tel: 01274 510252
Mob: 07941 364274

